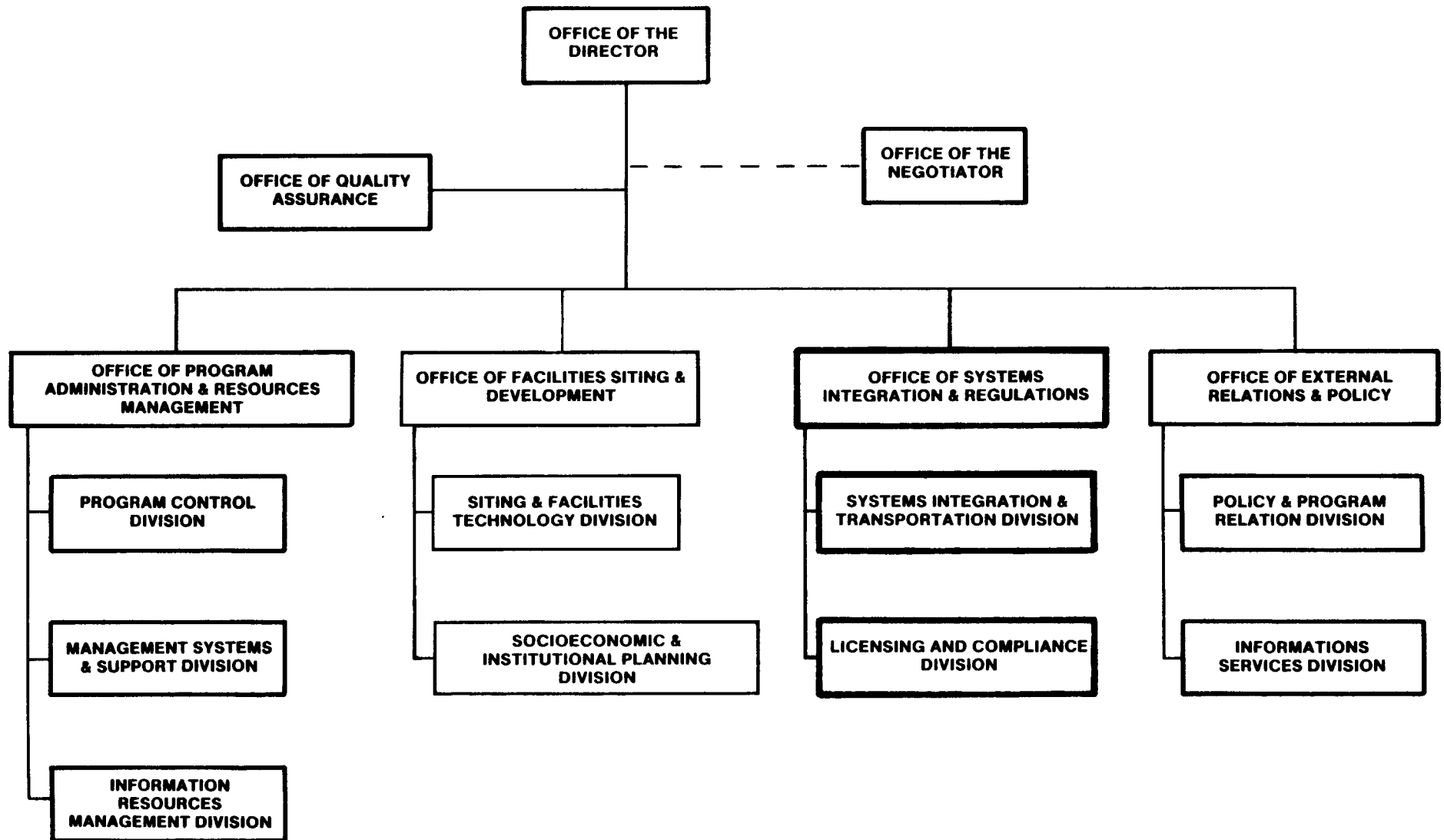


RESPONSIBILITIES OF THE OFFICE OF SYSTEMS INTEGRATION AND REGULATIONS

**RALPH STEIN
ASSOCIATE DIRECTOR
OFFICE OF SYSTEMS INTEGRATION AND REGULATIONS
OFFICE OF CIVILIAN RADIOACTIVE WASTE MANAGEMENT
U.S. DEPARTMENT OF ENERGY**

**PRESENTATION TO THE
NUCLEAR WASTE TECHNICAL REVIEW BOARD
MARCH 7-8, 1989**



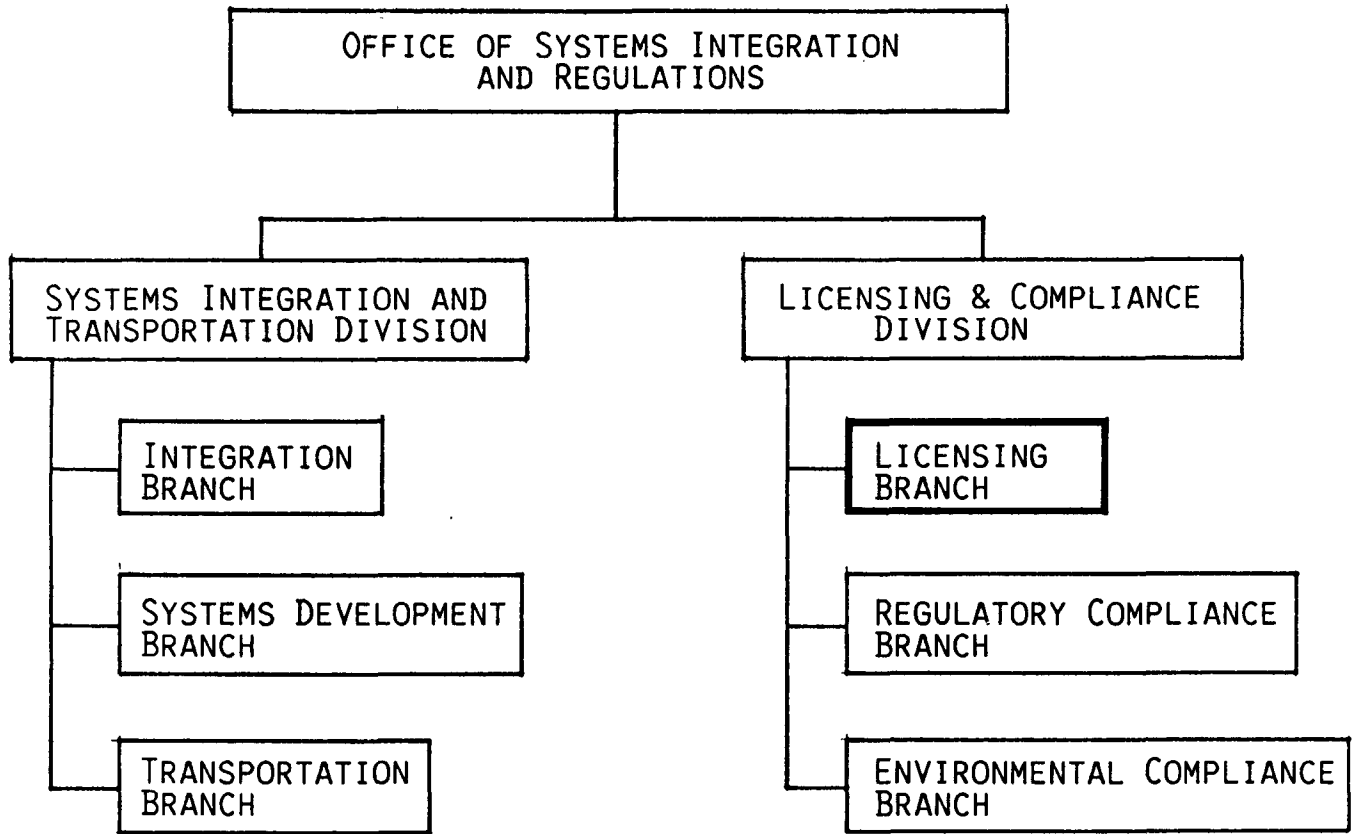
OFFICE OF SYSTEMS INTEGRATION AND REGULATIONS MISSION

OSIR HAS PRIMARY RESPONSIBILITY FOR PLANNING, MANAGING, AND OVERSEEING THE INTEGRATION OF THE CIVILIAN RADIOACTIVE WASTE MANAGEMENT SYSTEM:

- DEVELOPING AND MANAGING THE TRANSPORTATION PROGRAM
- DEVELOPING A PROGRAM FOR THE DEVELOPMENT AND DEMONSTRATION OF ROD CONSOLIDATION
- MANAGING AND COORDINATING SAFETY ACTIVITIES AND EQUIPMENT
- DEVELOPING SYSTEMS REQUIREMENT AND DESCRIPTION (SRD) DOCUMENTS
- PROVIDING ASSURANCE THAT THE LICENSING SUPPORT SYSTEM (LSS) CONTAINS NECESSARY INFORMATION
- MANAGING THE REGULATORY COMPLIANCE PROGRAM
- COORDINATING AND MANAGING ACTIVITIES LEADING TO THE LICENSING OF A GEOLOGIC REPOSITORY AND MRS, INCLUDING PREPARING THE LICENSE APPLICATIONS
- PREPARING AND DEVELOPING LICENSING PLANS

OFFICE OF SYSTEMS INTEGRATION
AND REGULATIONS MISSION (CONT'D)

- PERFORMING SAFETY, RISK, AND PERFORMANCE ASSESSMENTS TO SUPPORT REPOSITORY AND MRS LICENSING
- MANAGING NEPA ACTIVITIES, INCLUDING PREPARING AND COORDINATING EISS
- DEMONSTRATING COMPLIANCE WITH FEDERAL, STATE, AND LOCAL ENVIRONMENTAL REGULATIONS



OSIR LICENSING AND COMPLIANCE DIVISION FUNCTIONS

LICENSING BRANCH

- DEVELOP LICENSING POLICY, STRATEGY, AND PROCEDURES INCLUDING POLICIES ON THE TYPE AND FORMAT/CONTENT OF REGULATORY DOCUMENTS
- IDENTIFY, REVIEW, AND INTERPRET APPLICABLE STATUTES, REGULATIONS, AND REGULATORY STANDARDS/CRITERIA TO PROVIDE GUIDANCE TO THE PROGRAM
- MANAGE AND COORDINATE INTERACTIONS BETWEEN THE DOE AND NRC
- MANAGE ALL REGULATORY ACTIVITIES INCLUDING HQ, PROJECT OFFICE AND CONTRACTOR ACTIVITIES

GORDON J. APPEL

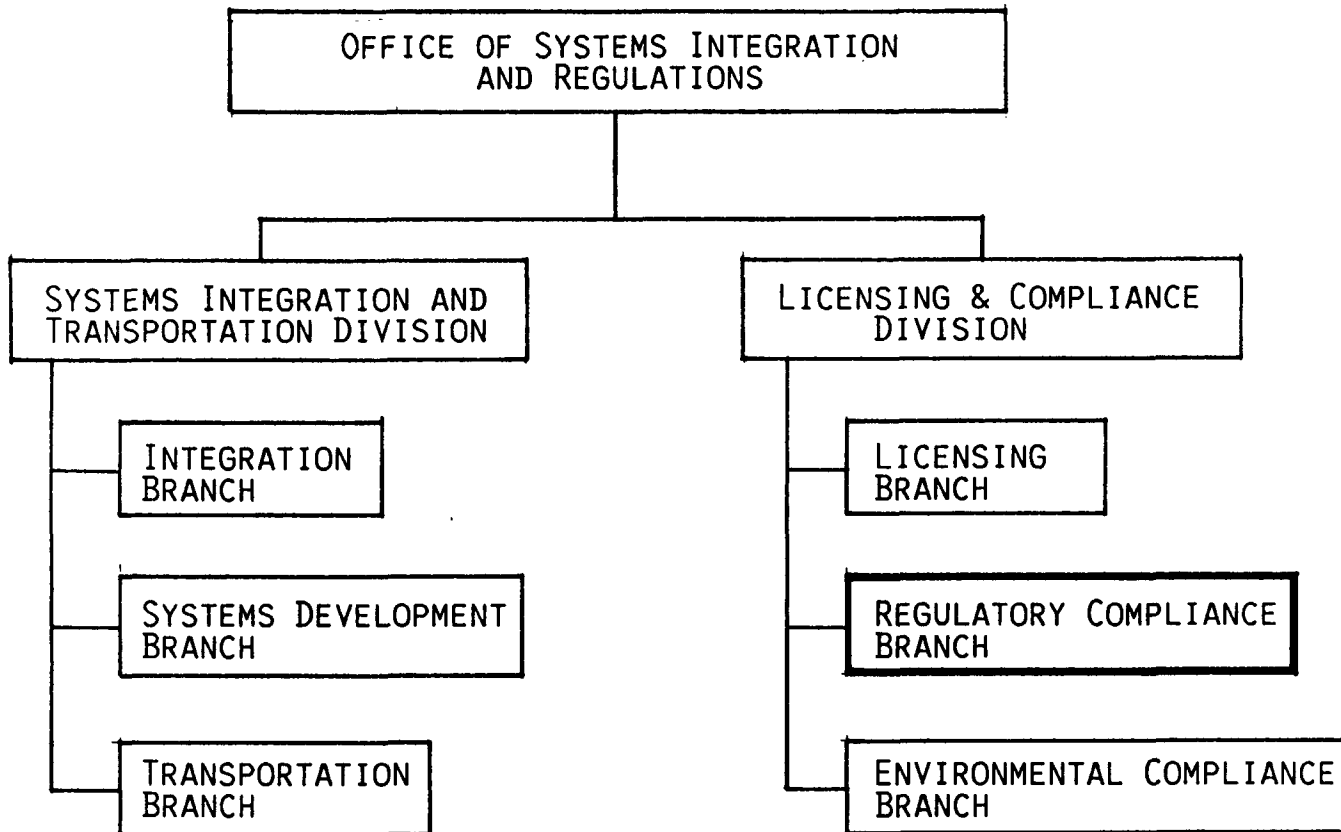
BA - GEOLOGY, RUTGERS

17 YEARS PROFESSIONAL EXPERIENCE

- DOE OCRWM PROGRAM, OSIR, CHIEF, LICENSING BRANCH
- DOE SALT REPOSITORY PROJECT
 - ACTING DIRECTOR, REGULATORY COMPLIANCE DIVISION
 - CHIEF, LICENSING AND SYSTEMS BRANCH
 - PROJECT MANAGER, SITE EVALUATION BRANCH
- DECISION PLANNING CORPORATION, STAFF CONSULTING GEOLOGIST
- DAMES & MOORE, PROJECT GEOLOGIST

SPECIAL SKILLS

- PROJECT MANAGEMENT
- NUCLEAR POWER PLANT SITING



OSIR LICENSING AND COMPLIANCE DIVISION
FUNCTIONS (CONT'D)

REGULATORY COMPLIANCE BRANCH

- GENERATE, MANAGE, AND MONITOR THE DEVELOPMENT OF LICENSING POSITIONS
- SPECIFY DATA REQUIRED TO DEMONSTRATE COMPLIANCE WITH REGULATIONS
- PREPARE THE SYSTEM PERFORMANCE ASSESSMENT PLAN AND DEVELOP DOE PERFORMANCE ASSESSMENT POLICY
- PROVIDE RISK, SAFETY, AND PERFORMANCE ANALYSES FOR LICENSE APPLICATIONS, ISSUE RESOLUTION, AND TO SUPPORT ENVIRONMENTAL COMPLIANCE
- DEVELOP AND MAINTAIN THE SCP ADMINISTRATIVE RECORD
- MANAGE MODEL VERIFICATION ACTIVITIES AND ENSURE PROPER UTILIZATION
- OVERSEE DEVELOPMENT OF SITE SCREENING METHODOLOGIES FOR AN MRS

DONALD H. ALEXANDER

PHD - GEOCHEMISTRY, UNIVERSITY OF MICHIGAN

MS - GEOCHEMISTRY, UNIVERSITY OF MICHIGAN

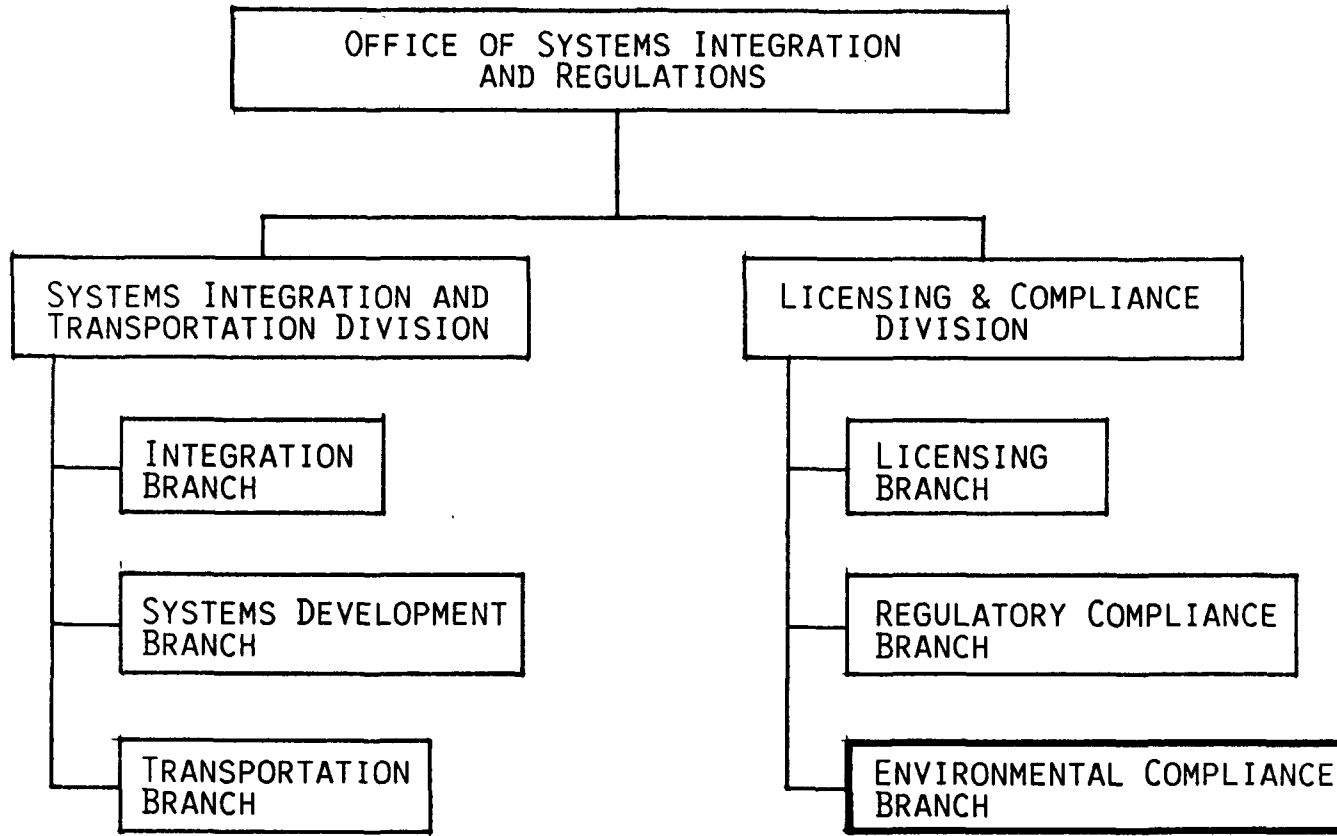
BS - GEOCHEMISTRY, STATE UNIVERSITY OF NEW YORK

10 YEARS PROFESSIONAL EXPERIENCE

- DOE OCRWM PROGRAM
 - OSIR, CHIEF, REGULATORY COMPLIANCE BRANCH
 - OFFICE OF GEOLOGIC REPOSITORIES, CHIEF, TECHNOLOGY BRANCH
- NRC, NMSS, OFFICE OF RESEARCH, PHYSICAL SCIENTIST

SPECIAL SKILLS

- PROJECT MANAGEMENT
- GEOCHEMISTRY, PETROLOGY, MINERALOGY, GEOPHYSICS



OSIR LICENSING AND COMPLIANCE DIVISION
FUNCTIONS (CONT'D)

ENVIRONMENTAL COMPLIANCE BRANCH

- DEVELOP PROGRAMMATIC GUIDANCE ON POLICY AND PROCEDURES FOR APPLICABLE ENVIRONMENTAL REGULATIONS AND STANDARDS
- OVERSEE SITE CHARACTERIZATION ENVIRONMENTAL COMPLIANCE THROUGH DEVELOPMENT AND IMPLEMENTATION OF REGULATORY COMPLIANCE, ENVIRONMENTAL PROGRAM, AND ENVIRONMENTAL FIELD ACTIVITY PLANS
- INTERACT WITH FEDERAL, STATE, LOCAL AGENCIES, AS WELL AS AFFECTED INDIAN TRIBES
- DEVELOP NEPA COMPLIANCE STRATEGIES THROUGH EIS SCOPING AND IMPLEMENTATION PLANS IN SUPPORT OF REPOSITORY, MRS AND TRANSPORTATION DEVELOPMENT
- COORDINATE PREPARATION AND REVIEW OF EIS ACCOMPANYING SITE RECOMMENDATION TO THE PRESIDENT AND LICENSE APPLICATION TO THE NRC

GERALD J. PARKER

M.S.E - ENGINEERING MANAGEMENT, CATHOLIC UNIVERSITY

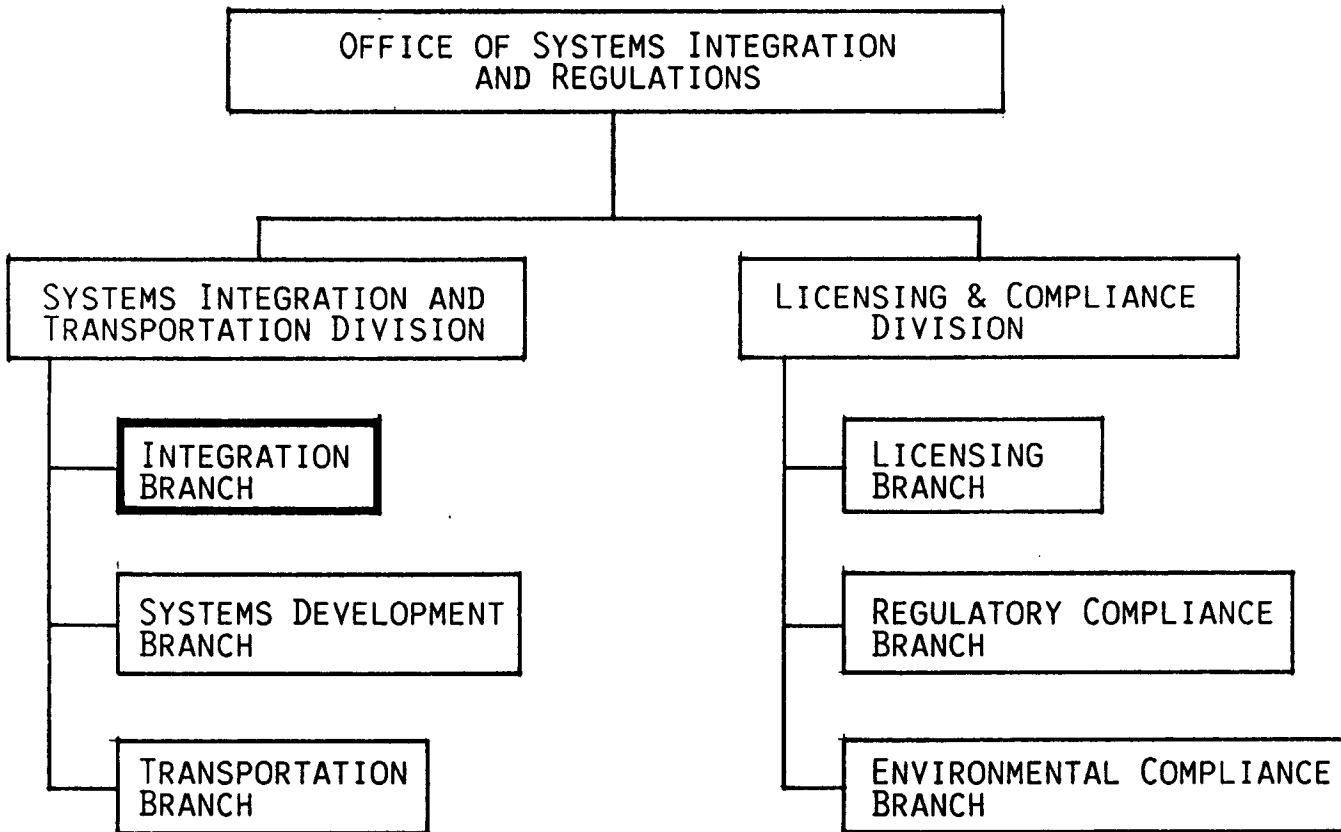
B.S. - CHEMICAL ENGINEERING, WORCESTER POLYTECHNICAL INSTITUTE

23 YEARS PROFESSIONAL EXPERIENCE

- DOE-OCRWM PROGRAM, OSIR, BRANCH CHIEF OF ENVIRONMENTAL COMPLIANCE BRANCH
- DOE - PETROLEUM RESOURCE DEVELOPMENT PROGRAM, OOG, ENVIRONMENTAL ISSUES/SITING INITIATIVES MANAGER
- FEA - OFFICE OF FUELS UTILIZATION, OFFICE DIRECTOR
- EPA, AIR POLLUTION CONTROL ENFORCEMENT MANAGER, TEN REGIONAL OFFICES
- NAVY DEPARTMENT, ORDINANCE ENGINEER

SPECIAL SKILLS

- PROJECT MANAGEMENT
- ENVIRONMENTAL ENGINEERING, IMPACT ANALYSIS, AND REGULATORY SITING ISSUES
- EIS/EA PREPARATION



OSIR SYSTEMS INTEGRATION AND TRANSPORTATION DIVISION FUNCTIONS

INTEGRATION BRANCH

- INTEGRATION OF OVERALL SYSTEM DESIGN
- SYSTEM REQUIREMENTS AND DESCRIPTION DOCUMENTS
- OPTIMAL MRS ROLE
- WASTE LOGISTICS, ACCEPTANCE SCHEDULES, STORAGE REQUIREMENTS
- FACILITY INTERFACE CAPABILITY ASSESSMENT, UTILITY LIAISON
- COORDINATE KEY TECHNICAL ACTIVITIES
- INTERFACES MATCHED
- CONSISTENT PHILOSOPHIES EMPLOYED
- RESOLVE KEY SYSTEM TECHNICAL ISSUES
- SPECIAL STUDIES
- SYSTEMS ENGINEERING APPROACH
- BASELINE MANAGEMENT/CHANGE CONTROL

WILLIAM J. DANKER

BS - ELECTRICAL ENGINEERING, VALPARAISO UNIVERSITY

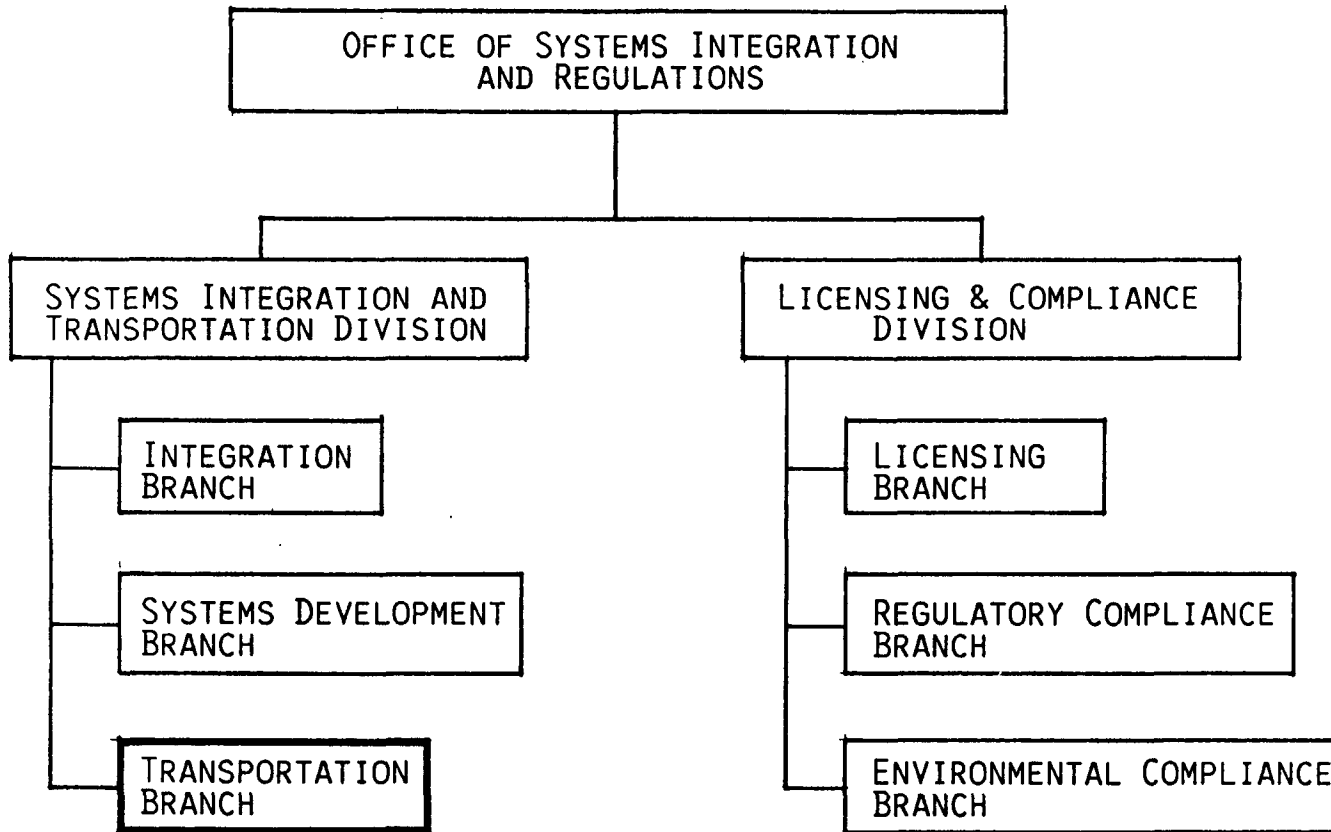
MS - MECHANICAL ENGINEERING, STANFORD UNIVERSITY
EMPHASIS IN NUCLEAR ENGINEERING

20 YEARS PROFESSIONAL EXPERIENCE

- DOE - OCRWM PROGRAM
 - OSIR, INTEGRATION BRANCH, CHIEF
 - OFFICE OF GEOLOGIC REPOSITORIES, ENGINEERING BRANCH, REPOSITORY DESIGN ENGINEER
- INTERNATIONAL ATOMIC ENERGY ASSOCIATION, SAFEGUARDS INSPECTOR
- TECHNICAL ASSISTANT TO DOE ASSISTANT SECRETARY FOR NUCLEAR ENERGY
- U.S. ARMY, REACTOR OPERATOR

SPECIAL SKILLS

- MANAGEMENT
- NUCLEAR ENGINEERING



OSIR SYSTEMS INTEGRATION AND TRANSPORTATION DIVISION FUNCTIONS (CONT'D)

TRANSPORTATION BRANCH

- DETERMINE TRANSPORTATION REQUIREMENTS
- DEVELOP AND IMPLEMENT PLANS FOR DEVELOPING AND ACQUIRING TRANSPORTATION EQUIPMENT
- DEVELOP AND IMPLEMENT PLANS AND PROCEDURES FOR THE OPERATION OF THE TRANSPORTATION SYSTEM
- PROVIDE FOR MAXIMUM UTILIZATION OF PRIVATE SECTOR IN TRANSPORTATION SERVICES
- SOLICIT AND INCORPORATE VIEWS OF EXTERNAL GROUPS
- INTERACT WITH OTHER FEDERAL AGENCIES (E.G., DOT, NRC) ON REGULATORY REQUIREMENTS
- SUPPORT DEVELOPMENT OF NEPA DOCUMENTATION RELATED TO TRANSPORTATION

CHRISTOPHER A. KOUTS

MS - ENGINEERING MECHANICS, GEORGE WASHINGTON UNIVERSITY
BS - MECHANICAL ENGINEERING, GEORGE WASHINGTON UNIVERSITY

REGISTERED PROFESSIONAL ENGINEER, VIRGINIA

17 YEARS PROFESSIONAL EXPERIENCE

- DOE - OCRWM PROGRAM
 - OSIR, TRANSPORTATION BRANCH, CHIEF
 - OFFICE OF STORAGE AND TRANSPORTATION SYSTEMS, MRS TEAM, GENERAL ENGINEER
- DOE OFFICE OF RENEWABLE TECHNOLOGY, PROGRAM MANAGER - BIOFUELS R&D
- DOE OFFICE OF ENVIRONMENTAL SAFETY & HEALTH - NEPA COMPLIANCE, POLICY ANALYST
- DOE OFFICE OF RESOURCE APPLICATIONS - LEASING POLICY, REGULATORY ANALYST
- EPA, OFFICE OF NOISE ABATEMENT & CONTROL, PROJECT OFFICER

CHRISTOPHER A. KOUTS

- ATLANTIC RESEARCH CORPORATION, MECHANICAL ENGINEER
- GEORGE WASHINGTON UNIVERSITY, GRADUATE RESEARCH SCHOLAR ASSISTANT

SPECIAL SKILLS

- PROGRAM/PROJECT MANAGEMENT