

**U.S. DEPARTMENT OF ENERGY
OFFICE OF CIVILIAN RADIOACTIVE WASTE MANAGEMENT**

**PRESENTATION TO
THE NUCLEAR WASTE TECHNICAL REVIEW BOARD**

**SUBJECT: YUCCA MOUNTAIN
ENVIRONMENTAL PROGRAM
MANAGEMENT**

PRESENTER: WENDY R. DIXON

**PRESENTER'S TITLE
AND ORGANIZATION: DIVISION DIRECTOR
PROJECT AND OPERATIONS CONTROL DIVISION
YUCCA MOUNTAIN PROJECT OFFICE
DEPARTMENT OF ENERGY**

**PRESENTER'S
TELEPHONE NUMBER: (702) 794-7949**

APRIL 24, 1990

PRESENTATION TOPICS PROGRAM MANAGEMENT

- **HISTORICAL FRAMEWORK**
- **ORGANIZATION**
- **INTEGRATION/INTERACTION**

HISTORICAL FRAMEWORK

- **PRE-ACTIVITY SURVEYS IN AREA** **SINCE 1978**
 - **BIOLOGICAL**
 - **ARCHAEOLOGICAL**
- **FAR FIELD RADIOLOGICAL MONITORING** **HISTORICAL**
- **BIOTIC FIELD SURVEYS** **1980-1986**
 - **SMALL MAMMALS**
 - **REPTILES**
 - **BIRDS**
 - **VEGETATION**
- **DESERT TORTOISE SURVEYS** **1981-1984**
- **METEOROLOGICAL MONITORING** **1985**

HISTORICAL FRAMEWORK

(CONTINUED)

- **NEAR FIELD RADIOLOGICAL MONITORING** 1987
- **TERRESTRIAL ECOSYSTEMS** 1988
- **ARCHAEOLOGICAL RESOURCES** 1988
- **NATIVE AMERICAN STUDIES** 1988
- **AIR QUALITY (PARTICULATE MONITORING)** 1989
- **SOILS** 1989
- **WATER RESOURCES** (1990)

ENVIRONMENTAL DOCUMENTATION

- **FINAL ENVIRONMENTAL ASSESSMENT** 1986
 - BASED ON EXISTING INFORMATION
 - ISSUED FOR REVIEW AND COMMENT
 - NO SIGNIFICANT ADVERSE IMPACTS IDENTIFIED

- **ENVIRONMENTAL PROGRAM OVERVIEW** 1988

- **ENVIRONMENTAL MONITORING AND MITIGATION PLAN (REV. 1)** 1987
 - AIR QUALITY
 - TERRESTRIAL ECOSYSTEMS
 - RADIOLOGICAL STUDIES
 - CULTURAL RESOURCES: ARCHAEOLOGY

- **ENVIRONMENTAL REGULATORY COMPLIANCE PLAN** 1988

- **ENVIRONMENTAL MONITORING AND MITIGATION PLAN (REV. 2)** 1988
 - WATER RESOURCES

ENVIRONMENTAL DOCUMENTATION

(CONTINUED)

- ENVIRONMENTAL REGULATORY COMPLIANCE PLAN (REV. 1) 1988
- ENVIRONMENTAL FIELD ACTIVITY PLANS
 - AIR QUALITY 1988
 - TERRESTRIAL ECOSYSTEMS 1988
 - CULTURAL RESOURCES: ARCHAEOLOGICAL COMPONENT 1988
 - CULTURAL RESOURCES: NATIVE AMERICAN COMPONENT 1988
 - RADIOLOGICAL STUDIES 1988
 - SOILS 1990
 - WATER RESOURCES (1990)
- RECLAMATION PROGRAM PLAN 1989
- RECLAMATION FEASIBILITY PLAN 1990
- RECLAMATION IMPLEMENTATION PLAN (1990)
- ENVIRONMENTAL IMPACT STATEMENT MID 1990s

ENVIRONMENTAL PROGRAM MISSION

- 1. IMPLEMENT ENVIRONMENTAL COMPLIANCE REQUIREMENTS**
- 2. MONITOR EFFECTS OF SITE CHARACTERIZATION ACTIVITIES**
- 3. COLLECT ENVIRONMENTAL DATA REQUIRED FOR ENVIRONMENTAL COMPLIANCE**
- 4. DEVELOP AND IMPLEMENT MITIGATION MEASURES TO MINIMIZE ADVERSE IMPACTS OF SITE CHARACTERIZATION ACTIVITIES**

CONSIDERATIONS FOR PROGRAM DESIGN

- **PURPOSE**
 - **SITE CHARACTERIZATION ACTIVITIES**

- **TYPE OF POSSIBLE DISTURBANCE**
 - **CONSTRUCTION (ISOLATED, SMALL TOTAL AREA, LESS THAN 465 ACRES)**
 - **OPERATIONAL**

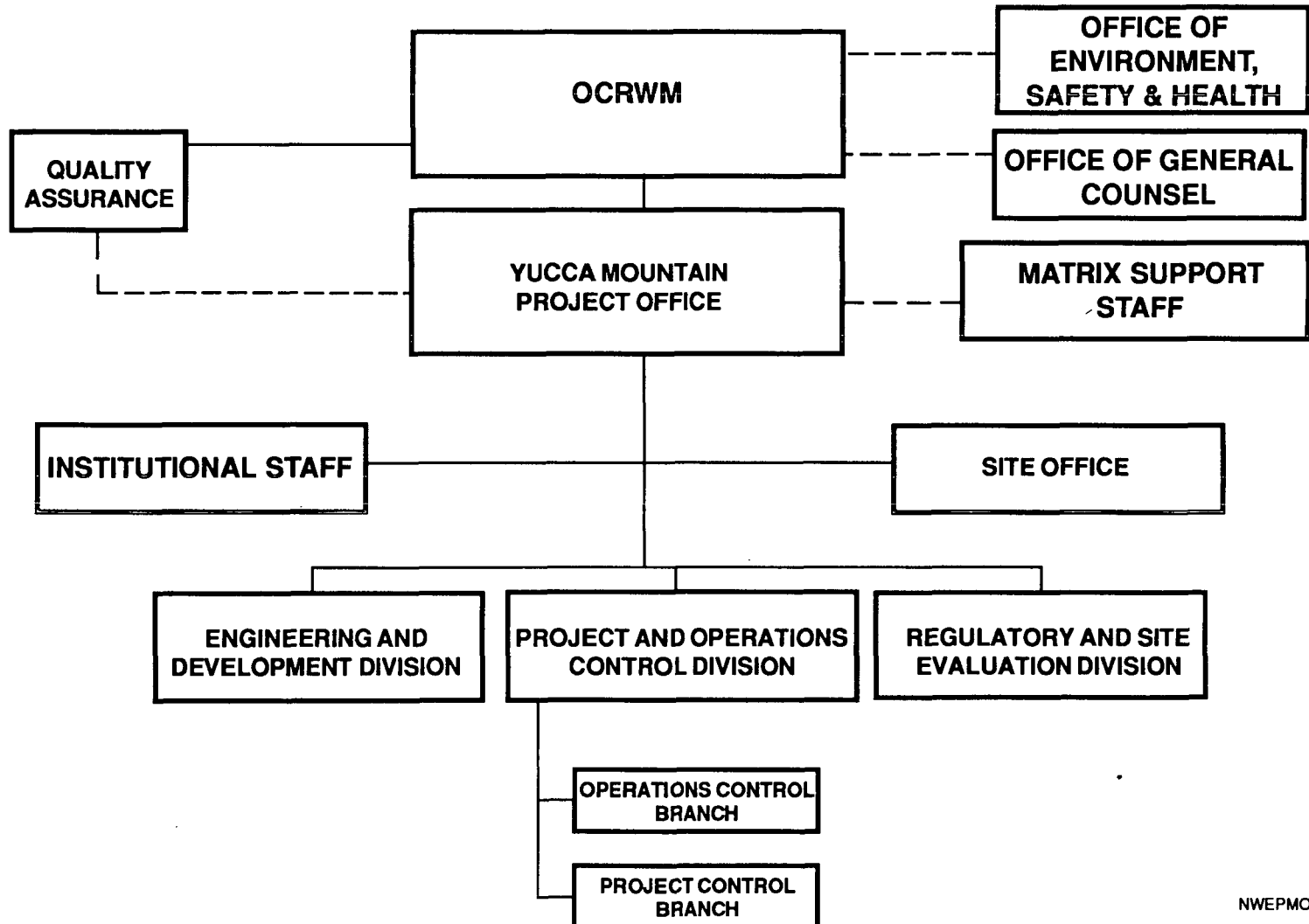
- **LENGTH OF DISTURBANCE**
 - **APPROXIMATELY SEVEN YEARS (SHORT-TERM)**

- **FINDINGS OF THE ENVIRONMENTAL ASSESSMENT**
 - **NO SIGNIFICANT ADVERSE IMPACTS EXPECTED**

- **DOE/YMP PRO-ACTIVE IN ENVIRONMENTAL COMPLIANCE AND PROTECTION**

- **PROGRAM DESIGNED IN A COMPREHENSIVE FASHION CONSIDERING THE AREAL EXTENT OF IMPACTS**

PROJECT OFFICE ORGANIZATION



PROJECT AND OPERATIONS CONTROL DIVISION: SUPPORTING ORGANIZATIONS

- **SCIENCE APPLICATIONS INTERNATIONAL CORPORATION**
 - TECHNICAL AND MANAGEMENT SUPPORT SERVICES
 - PRINCIPAL INTEGRATOR
 - AIR QUALITY MONITORING
 - METEOROLOGICAL MONITORING
 - NATIVE AMERICAN STUDIES
 - RADIOLOGICAL STUDIES
 - ENVIRONMENTAL REGULATORY COMPLIANCE
 - **EG&G ENERGY MEASUREMENTS**
 - TERRESTRIAL ECOSYSTEMS
 - RECLAMATION STUDIES
 - **DESERT RESEARCH INSTITUTE**
 - ARCHAEOLOGICAL STUDIES
 - **U.S. GEOLOGICAL SURVEY**
 - WATER RESOURCES
 - **ENVIRONMENTAL PROTECTION AGENCY**
 - SUPPORT TO RADIOLOGICAL STUDIES
 - **SOIL CONSERVATION SERVICE**
 - SOILS

DEFINITION OF INTEGRATION

- 1. INTERNAL INTERACTIONS - INTERDISCIPLINARY APPROACH WITHIN ENVIRONMENTAL PROGRAM**
- 2. EXTERNAL INTERACTIONS - INTERACTION WITH REST OF PROJECT**

INTERNAL INTERACTIONS

- **CLOSE COMMUNICATION AMONG TEAM MEMBERS**
- **REGULAR TECHNICAL INTERCHANGE MEETINGS HELD AMONG ENVIRONMENTAL PARTICIPANTS**
- **SEVEN YEARS OF EXPERIENCE AS YMPO TEAM**
- **EG&G, DRI AND EPA/PHS HAVE WORKED TOGETHER AT NTS FOR OVER 20 YEARS**
- **PROGRAM PLANNING AND IMPLEMENTATION PLANS COMPLETE AND ISSUED**

EXTERNAL INTERACTIONS

- **REGULATORY CONSULTATIONS**
- **WRITTEN GUIDANCE TO PARTICIPANTS**
- **REGULAR PRESENTATIONS AT PROJECT MANAGER MEETINGS**
- **FIELD ACTIVITY APPROVALS**
- **INTERFACE CONTROL WORKING GROUP**
- **DESIGN REVIEWS**
- **ESF ALTERNATIVES DESIGN WORKING GROUP**
- **LONG-RANGE PLANNING ACTIVITIES**
- **OTHER PROJECT GUIDANCE DOCUMENTS**

EXTERNAL INTERACTIONS (CONTINUED)

FIELD ACTIVITY APPROVALS

- **THE PRINCIPAL INVESTIGATOR FOR A SITE CHARACTERIZATION ACTIVITY REQUESTS APPROVAL**
- **YMPO INITIATES THE FOLLOWING REVIEWS:**
 - **PREACTIVITY SURVEY FOR ARCHAEOLOGICAL, BIOLOGICAL, AND SOIL RESOURCES**
 - **RECLAMATION REQUIREMENTS**
 - **CONFLICTS WITH EMMP COMMITMENTS**
 - **LAND ACCESS COMPLIANCE**
 - **ENVIRONMENTAL REGULATORY COMPLIANCE**
- **YMPO NOTIFIES INVESTIGATOR OF APPROVAL OR DENIAL**
- **CONDITIONS OF APPROVAL ARE SPECIFIED**

EXTERNAL INTERACTIONS (CONTINUED)

INTERFACE CONTROL WORKING GROUP (ICWG)

- **ICWG CONTROLS INTERFACES AS DIRECTED BY THE SYSTEMS ENGINEERING MANAGEMENT PLAN (SEMP)**
- **REPRESENTS A "CLEARINGHOUSE" FOR AGREEMENTS OF DATA EXCHANGE BETWEEN PARTICIPANTS**
- **REQUIRES THAT AN AGREEMENT BE SIGNED BETWEEN DATA REQUESTOR AND DATA PROVIDER**
- **AGREEMENT SPECIFIES DATA TYPE AND DATE REQUIRED**

EXTERNAL INTERACTIONS (CONTINUED)

OTHER PROJECT GUIDANCE DOCUMENTS

- **PROJECT MANAGEMENT PLAN**
- **SYSTEMS ENGINEERING MANAGEMENT PLAN**
- **CONFIGURATION MANAGEMENT PLAN**
- **TECHNICAL DATA MANAGEMENT PLAN**
- **QUALITY ASSURANCE PROGRAM DESCRIPTION**

QUALITY ASSURANCE

- **PROJECT ENVIRONMENTAL PROGRAM HAS ALWAYS COME UNDER QA UMBRELLA**
- **APPLICABLE CRITERIA OF OCRWM QUALITY ASSURANCE PROGRAM APPLY TO THE ENVIRONMENTAL DISCIPLINES**
- **ENVIRONMENTAL PROGRAM WILL CONTINUE TO FOLLOW UPDATED QA REQUIREMENTS AS APPLICABLE**

ENVIRONMENTAL PROGRAM INTEGRATION PROCESS

