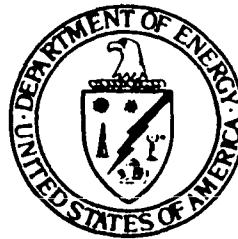


**Monitored Retrievable Storage/Transportation
Project Status and Budget Allocation**

**Ronald Milner, Associate Director
Office of Civilian Radioactive Waste Management
Office of Storage and Transportation**



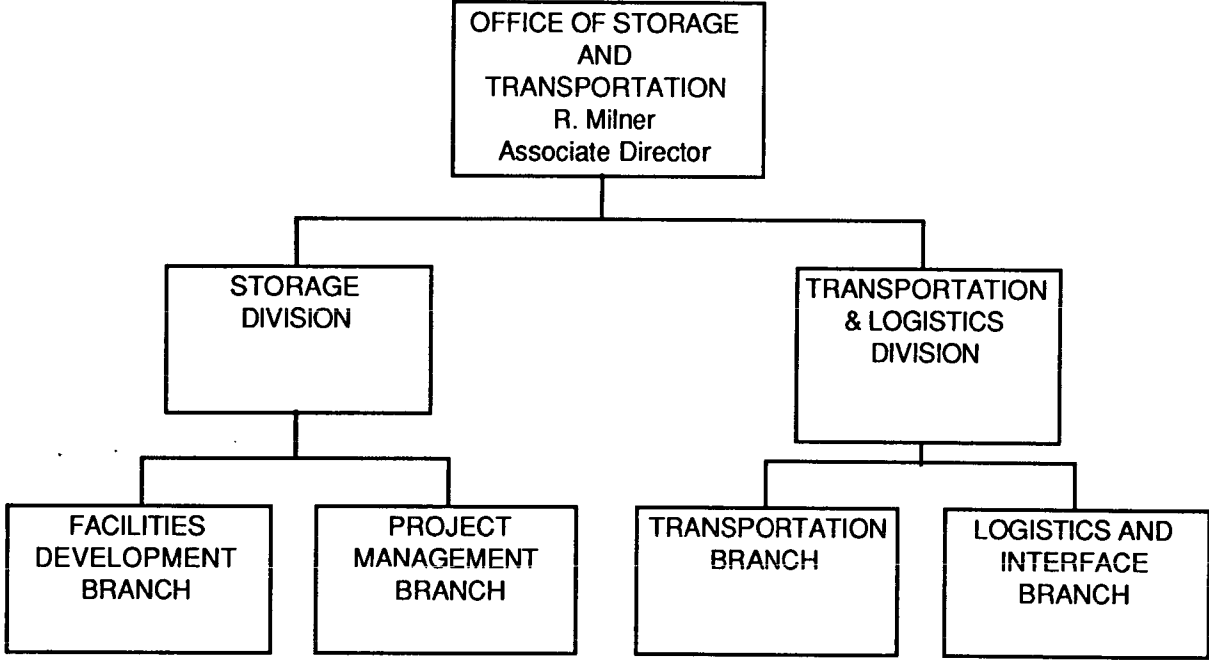
presented to

**Nuclear Waste Technical Review Board
January 7, 1992**

Items to be Presented

- **Organization of the Office of Storage & Transportation**
- **MRS & Transportation major milestones**
- **FY 1992 budget information**
- **Program priorities**
- **Rationale for priorities**

Office of Storage & Transportation Organization



MRS Major Milestones

- **Complete conceptual design** 3/92
- **Identify MRS host** 12/92
- **Complete Title I design** 1993
- **Complete environmental assessment for site(s)** 1993
- **Issue DEIS** 1994
- **Submit SAR to the NRC** 1994
- **Issue FEIS & ROD** 1995
- **Submit MRS LA to NRC** 1995
- **Start MRS facility construction** 1996
- **Start waste acceptance at MRS** 1998

Transportation System Major Milestones

- Issue RFP for Phase I cask acquisition 5/92**
- Complete design of Phase II casks 9/92**
- Award procurement(s) for Phase I casks 12/92**
- Receive certificate of compliance for Phase II casks from NRC 1994**
- Complete procurement of Phase I casks 1996**
- Start fabrication of Phase II casks 1997**
- Start transportation system operations 1998**

FY 1992 Budget Information

(in thousands of dollars)

Program Element	FY 1992 Request to Congress	FY 1992 Enacted (BA)	Total Funds Available (BO)
MRS	33,400	17,340	26,824
Transportation	22,355	18,355	18,355
Engr. Development	2,620	2,268	2,411
Waste Acceptance	2,830	2,479	2,731
Total	61,205	40,442	50,321

Program Priorities under the FY 1992 Funding

MRS

Perform siting, design, environmental, & quality assurance activities, & licensing interactions with NRC, to facilitate the secretary's commitment of a 1998 waste acceptance.

- **Complete MRS conceptual design, and start preliminary design**
- **Provide siting support to negotiator & volunteer host(s)**
- **Provide grants to potential volunteer hosts.**
- **Begin work on safety analysis report and conduct frequent and early interactions with NRC/Host**
- **Undertake environmental assessment activities; develop the EIS Management Plan**

Program Priorities under the FY 1992 Funding

MRS (cont'd)

- **Complete MRS Project Plan and Project Management Plan, and other documentation to support the ESAAB process and receive ESAAB approval to start Title I design**

Rationale for MRS Priorities

- **Siting is the critical MRS near-term milestone**
- **Priority is being given to activities which directly support siting**
 - **Grants to potential volunteer hosts**
 - **Support to negotiator/potential host (including technical evaluation of potential sites)**
 - **Environmental assessment activities**
- **Conceptual design information necessary input to siting process**
- **Submittal of SAR to NRC in advance of LA critical to expedited NRC review**

Program Priorities under the FY 1992 Funding

Transportation

The priority in transportation is to have a safe and efficient transportation capability and an institutional environment to transport spent fuel to an MRS in 1998. Specifically the following activities are planned for FY 1992:

- Issue RFP for complementary cask capability**
- Complete final designs and submit SARPs to the NRC for casks under development**
- Maintain program efforts on burn-up credit and other technical issues**
- Continue institutional planning and issue-resolution activities**

Program Priorities under the FY 1992 Funding

Transportation (cont'd)

- **Obtain formal public comment on NWPA Section 180 (c) strategy/
begin implementation**
- **Conduct transportation analyses for MRS EA**
- **Support delivery commitment schedule process**

Rationale for Transportation Priorities

- **Acquisition of Phase I casks necessary to ensure transport capability by 1/98**
- **RFP must be issued in FY 92 to support completion of acquisition prior to start of waste acceptance**
- **Phase II cask development must be continued to support early waste acceptance rate ramp-up**
- **institutional climate must be in place to support start of operations**
- **Section 180 (c) strategy must be in place to permit provision of emergency response training assistance beginning at least 3 years prior to start of waste acceptance**

Program Priorities under the FY 1992 Funding

Waste Acceptance

Performance of activities to ensure that the financial and technical terms and conditions of the waste acceptance detailed in the standard disposal contract (10 CFR 961) are implemented by both the department and waste owners in a safe, efficient, timely, and equitable manner to accommodate waste acceptance beginning in 1998. The following activities are planned for FY 1992:

- Issue final rule changing the basis of the fee to generated and sold**
- Publish 1992 acceptance priority ranking**
- Publish 1992 Annual Capacity Report (ACR)**
- Initiate acceptance, evaluation and approval of delivery commitment schedules submitted by waste owners**