

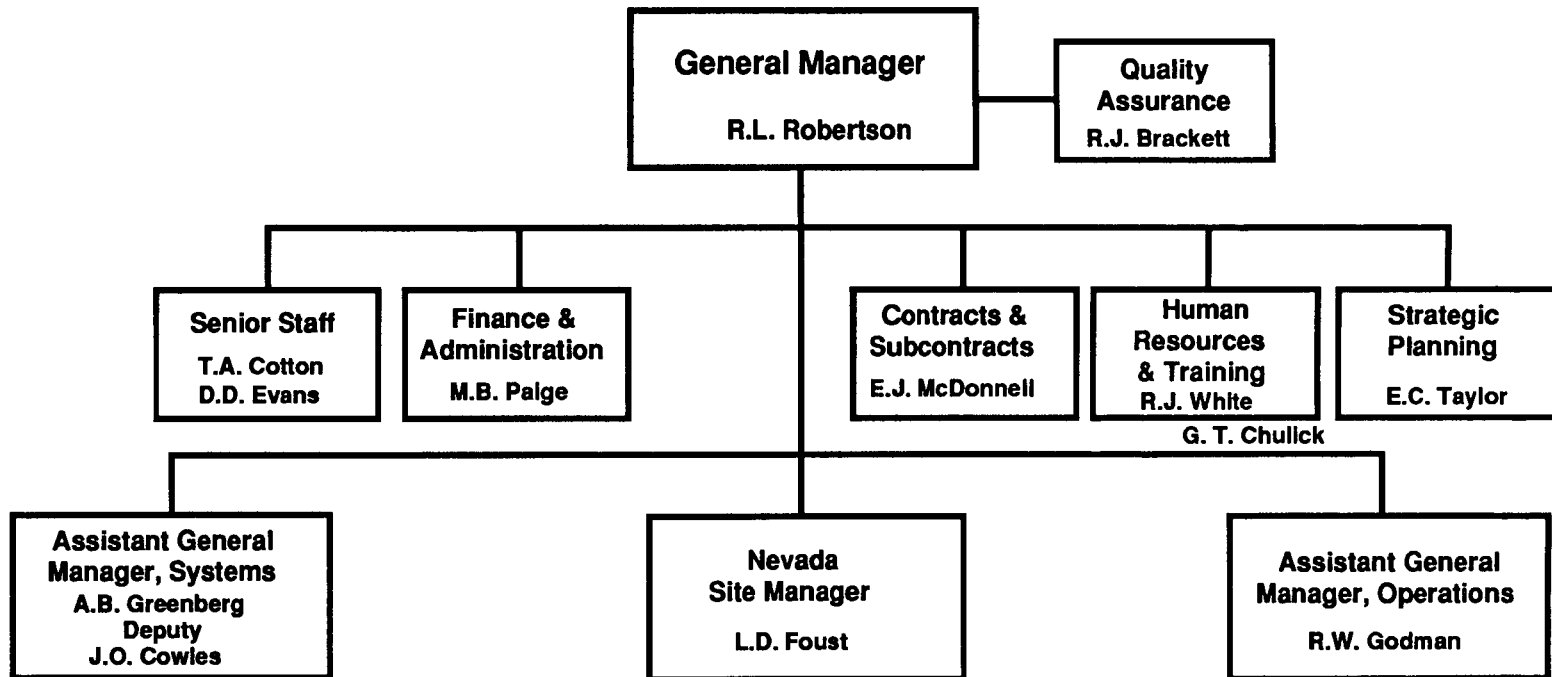
**U. S. Department of Energy  
Office of Civilian Radioactive Waste Management**

**Update on the Role of the  
M&O Contractor**

**Robby L. Robertson  
General Manager  
M&O/TRW  
Vienna, VA**

July 7, 1992

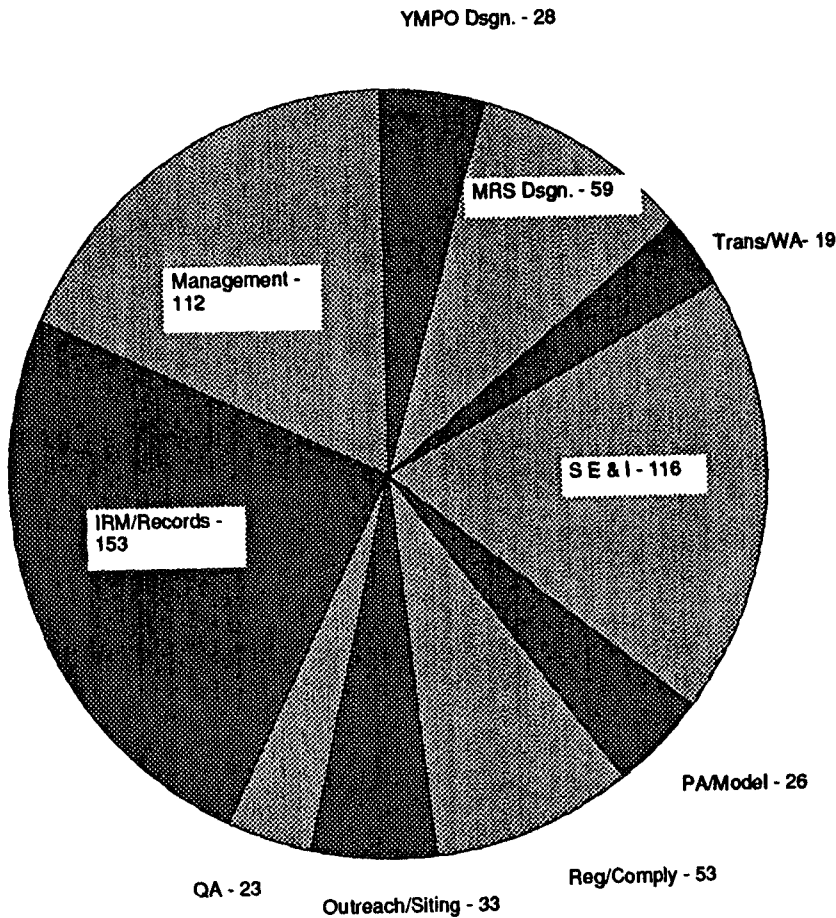
# CRWMS M&O Organization



# Team

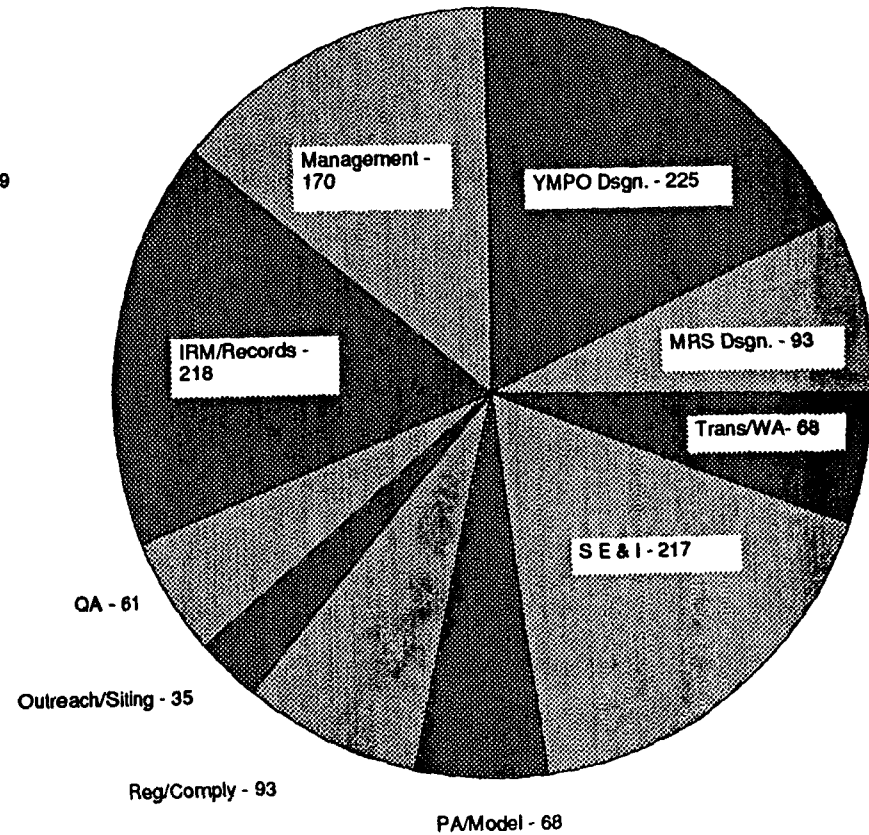
- TRW** - **Prime Contractor**
- Fluor Daniel (Fluor)** - **Surface Facility Design and Development**
- Morrison Knudsen (MKE)** - **Underground Facility Design and Development**
- B&W Fuel Company (BWFC)** - **Engineered Barrier Design and Development**
- Woodward Clyde Federal Services (WCFS)** - **Site Characterization**
- Duke Engineering (Duke)** - **Licensing, Outreach, MRS Design, QA**
- INTERA** - **Performance Assessment**
- E.R. Johnson Assoc. (JAI)** - **Storage and Transportation Analysis**
- JK Research Assoc. (JKA)** - **Socioeconomic and Policy Analysis**
- Logicon - RDA (RDA)** - **Systems Engineering and Modeling Support**

# M&O Manpower by Program Area



**July 1992**

**Total Staff = 622**

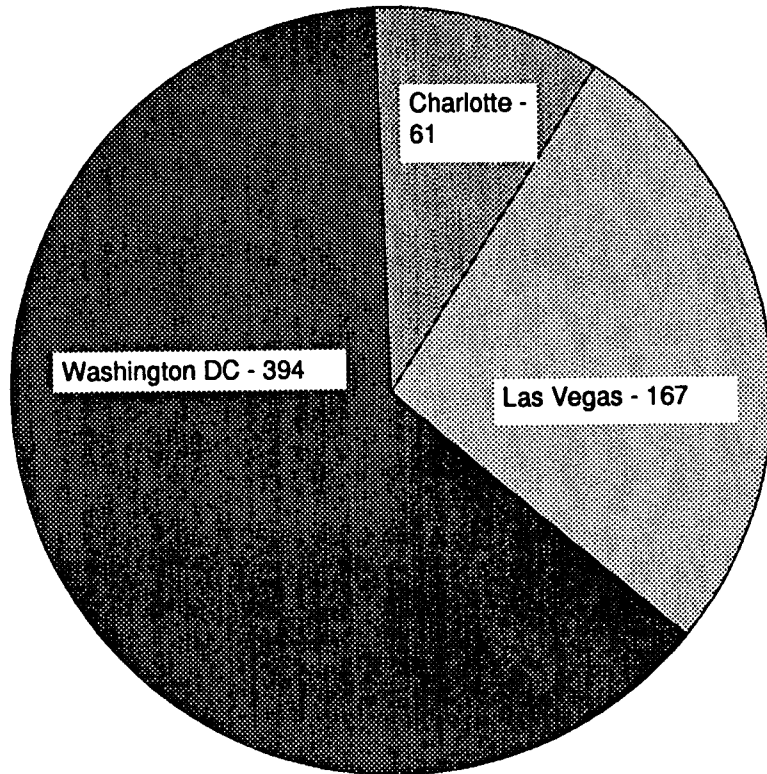


**September 1993 \***

**Total Staff = 1248**

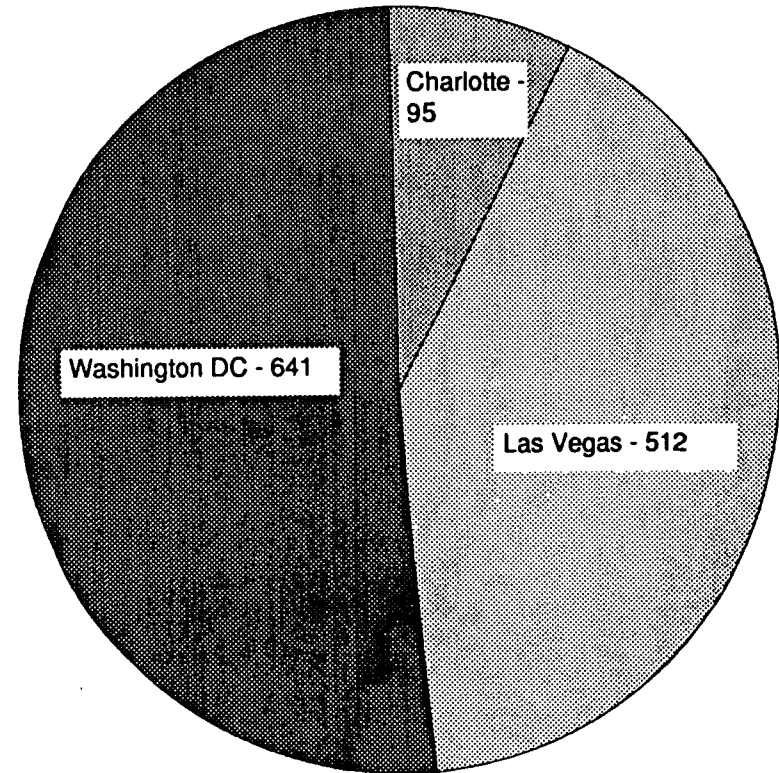
\* Assumes administrative budget request approval.

# M&O Manpower by Location



July 1992

Total Staffing = 622

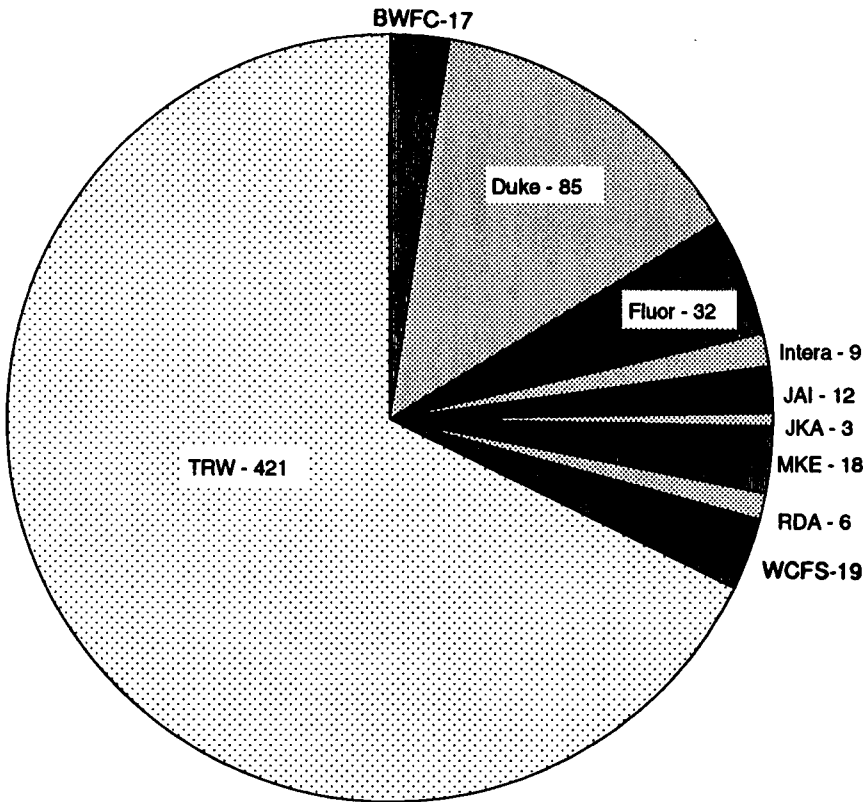


September 1993 \*

Total Staffing = 1248

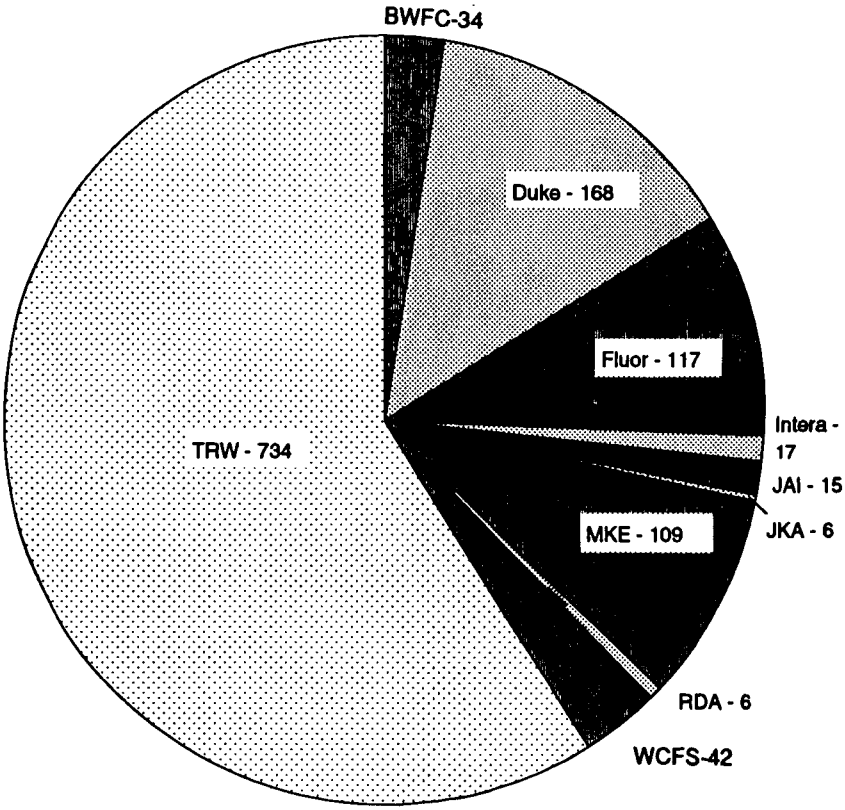
\* Assumes administrative budget request approval.

# M&O Manpower by Teammate



**July 1992**

**Total Staff = 622**



**September 1993 \***

**Total Staff = 1248**

\* Assumes administrative budget request approval.

# Highlights of Progress to Date

- **Successfully passed M&O QA Readiness Reviews**
- **Established program document hierarchy and are well into implementation**
- **Established a sound configuration management and change control system**
- **Providing lead support to strategic and contingency planning efforts**
- **Established new management and integration system with YMPO**

# Highlights of Progress to Date (Cont.)

- **Initiated system and subsystem studies to define critical requirements and trade-offs**
- **Completed first draft License Annotated Outlines for MGDS and MRS**
- **Began site suitability issues resolution with NRC**
- **Completed MRS Conceptual Design**
- **Significant support to DOE, and Negotiator in MRS siting**
- **Assumed responsibility for technical direction and integration of site characterization**



# Highlights of Progress to Date (Cont.)

- **Restructured performance assessment activities and assumed management and integration role**
- **Assumed responsibility for ESF construction management**
- **Undertaking rebaselining of Yucca Mountain site characterization program**
- **Assumed responsibility of all program records management**
- **Began development of InfoSTREAMS for records management and license support**
- **Lead role in 40 CFR 191 rule making**

# **FY '93 Focus**

- **Fully audited M&O QA program**
- **Fully developed system studies roadmap and program decision network**
- **Complete balance of program management and technical baseline documentation**
- **Integrated program/project cost and schedule control systems**
- **MRS Title I and II designs**
- **MRS siting selection and evaluation**

# **FY '93 Focus (Cont.)**

- **Phase I casks acquisition**
- **Full technical direction/integration of site characterization**
- **ESF Title II design**
- **Repository and EBS conceptual designs**
- **System-level performance assessment iterations**
- **Transition and ramp-up in Las Vegas**

# Summary

- **Transition of the M&O into its management/integration role is going well**
- **The M&O, Program and Project QA, design control, management systems, and technical baselines will be in place to support a program ramp-up**
- **Adequate and predictable annual funding is essential to meet program goals and control program costs**