

**U. S. Department of Energy
Office of Civilian Radioactive Waste Management**

Status of Mission 2001 Exercise

**Robert Sandifer, Manager
MGDS Development
M&O/Duke Engineering
Las Vegas, NV**

July 7, 1992

Overview of Mission 2001 Presentation

- **Background and approach**
- **Status of Mission 2001 exercise**
- **Products of Mission 2001**

What is Mission 2001?

- **Review of the baseline Yucca Mountain Site Characterization Project by an M&O-lead team**
- **Assessment of the feasibility of meeting the 2001 License Application milestone, if the site is approved**
 - **Confirm/develop defensible bases of estimates (BOEs)**
 - **Confirm work activity schedules**
 - **Confirm annual budget requirements**
- **Development of a methodology for future refinements of the BOEs/Baseline Management**

Strategy for Mission 2001 Exercise

- **Develop MGDS that meets or exceeds requirements**
- **Focus site characterization data needs on**
 - **Evaluation of site suitability**
 - **Performance assessment**
 - **Design and development**
 - **Licensing, if site is suitable and approved**
- **Challenge existing scope and cost estimates**

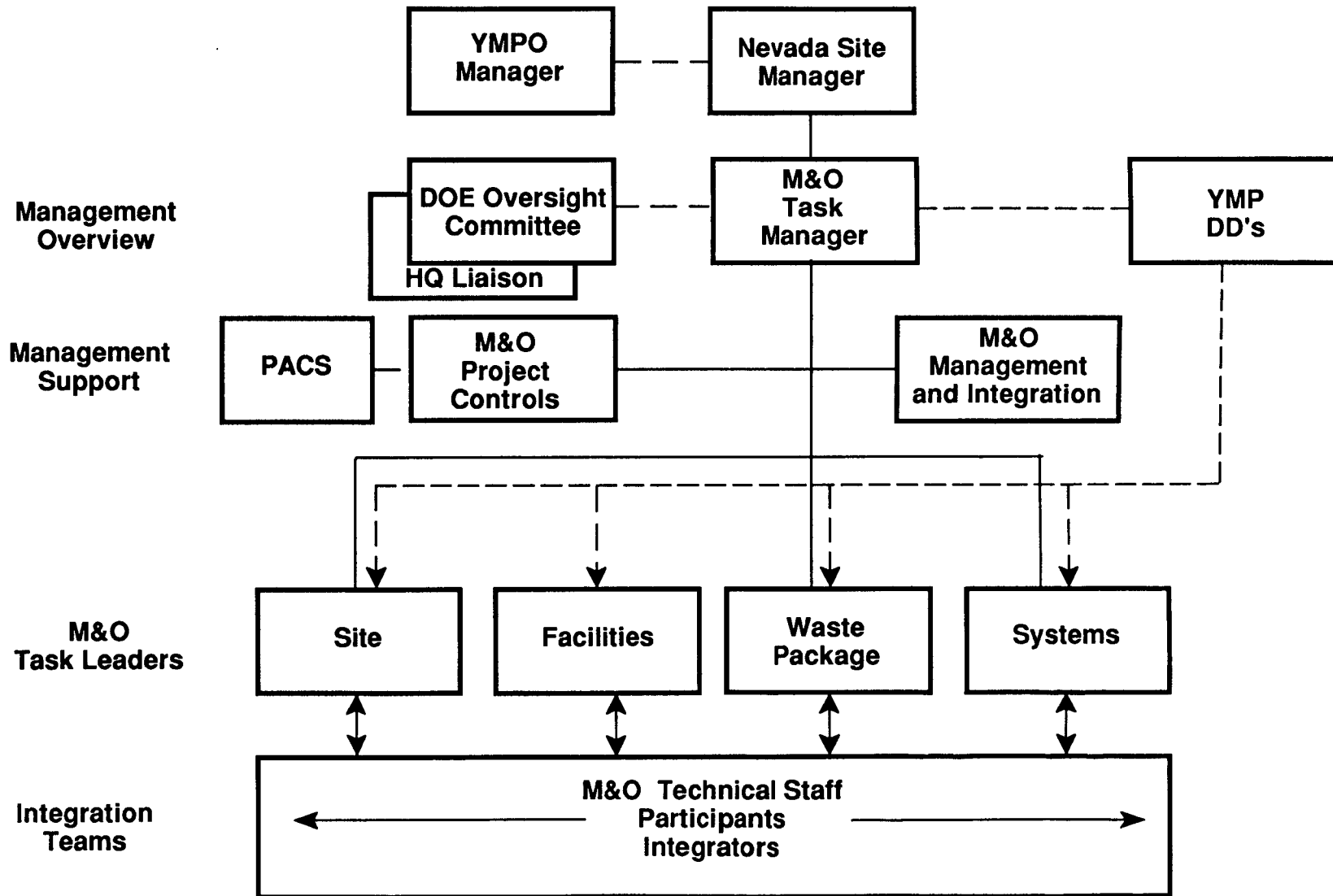
Mission 2001 Assumptions

- **FY 93 funding corresponds to the Administration request**
- **Project is not resource-limited after FY 93**
- **Permits will not cause major delays**
- **Design baseline is 1988 Site Characterization Plan-Conceptual Design Report as modified by Option 30 of the Exploratory Study Facility Alternatives Study (e.g. mechanical mining, 2 ramps, extensive drifting)**
- **Test program is described in 1992 Yucca Mountain Site Characterization Program Baseline document**

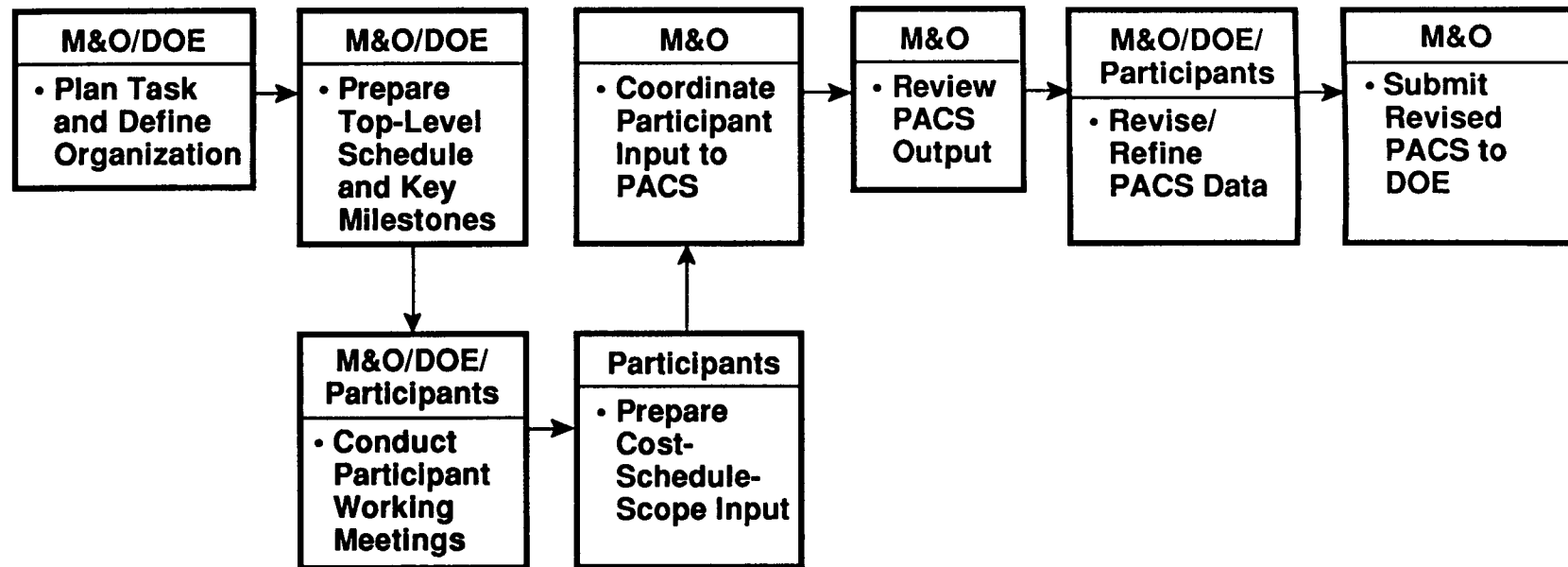
Project Options not in the Mission 2001 Baseline

- **Yucca Mountain Test Facility at Busted Butte**
- **Alternative waste packages that are more robust**
- **Waste package emplacement in drifts**
- **Alternative thermal loading scenarios**

Mission 2001 Task Team Organization



Generalized Flow Diagram for Mission 2001



Status of Mission 2001

- **PACS work stations were installed at the offices of each of the major participants in the Yucca Mountain Site Characterization Project**
- **Networks, budgets and scope of work have been input into the Planning and Control System (PACS) databases**
- **Initial steps are underway to integrate participant inputs**
- **Mission 2001 results are due to Yucca Mountain Project Office in mid-August 1992**

Mission 2001 Schedule for Updating Planning and Control System Databases

	1992																						
	March			April				May					June				July				August		
	13	20	27	3	10	17	24	1	8	15	22	29	5	12	19	26	3	10	17	24	31	7	14
Weekly reviews	▲	▲	▲	▲	▲	▲	▲	▲	▲	▲	▲	▲	▲	▲	▲	▲	▲	△	△	△	△	△	△
Define Team and Organization	■																						
Prep high level schd with key mlstns	■	■																					
Define Specs-level/format for B/L Input	■	■																					
Expand high level schd & define resp			■	■	■																		
Assign work responsibilities				■	■																		
FY'93 third level split				▲																			
Conduct Participant working meetings								■	■														
Participants prep Input to PACS									■	■	■	■	■	■	■	■							
M&O coord. Input to PACS-sched/budget																■	■	■	■				
Load data into PACS													■	■	■	■	■	■	■				
DOE review of PACS data														▲	▲	▲	▲	△	△	△	△		
Receive PACS output for review																			□				
Revise/refine PACS B/L data																			■	■	■		
Submit revised PACS planning to DOE																						■	■
FY'94 IRB submittal package				■	■	■																	
Sub "Mission 2001"				■	■	■	■																

Balance of Mission 2001 Activities

- **Complete integration of participant inputs**
- **Analyze critical path**
- **Integrate budget with schedule**
- **Critically review integrated scope-budget-schedule package**
- **Transmit results to DOE for review and approval**
- **Prepare and issue final report**

Products of Mission 2001 Exercise

- **Improved bases of estimates for elements of Yucca Mountain Site Characterization Project work scope**
- **Revised PACS baseline reflecting all activities required to meet 2001 License Application milestone**
- **Improved data base for analysis of baseline alternatives**
- **Report summarizing comprehensive program plan to achieve License Application in 2001**