

U.S. DEPARTMENT OF ENERGY  
OFFICE OF CIVILIAN RADIOACTIVE WASTE MANAGEMENT

**NUCLEAR WASTE TECHNICAL REVIEW BOARD  
FULL BOARD MEETING**

**SUBJECT:      FRAMEWORK OF DOE'S SITE  
CHARACTERIZATION TESTING  
PROGRAM**

**PRESENTER:      SUSAN B. JONES**

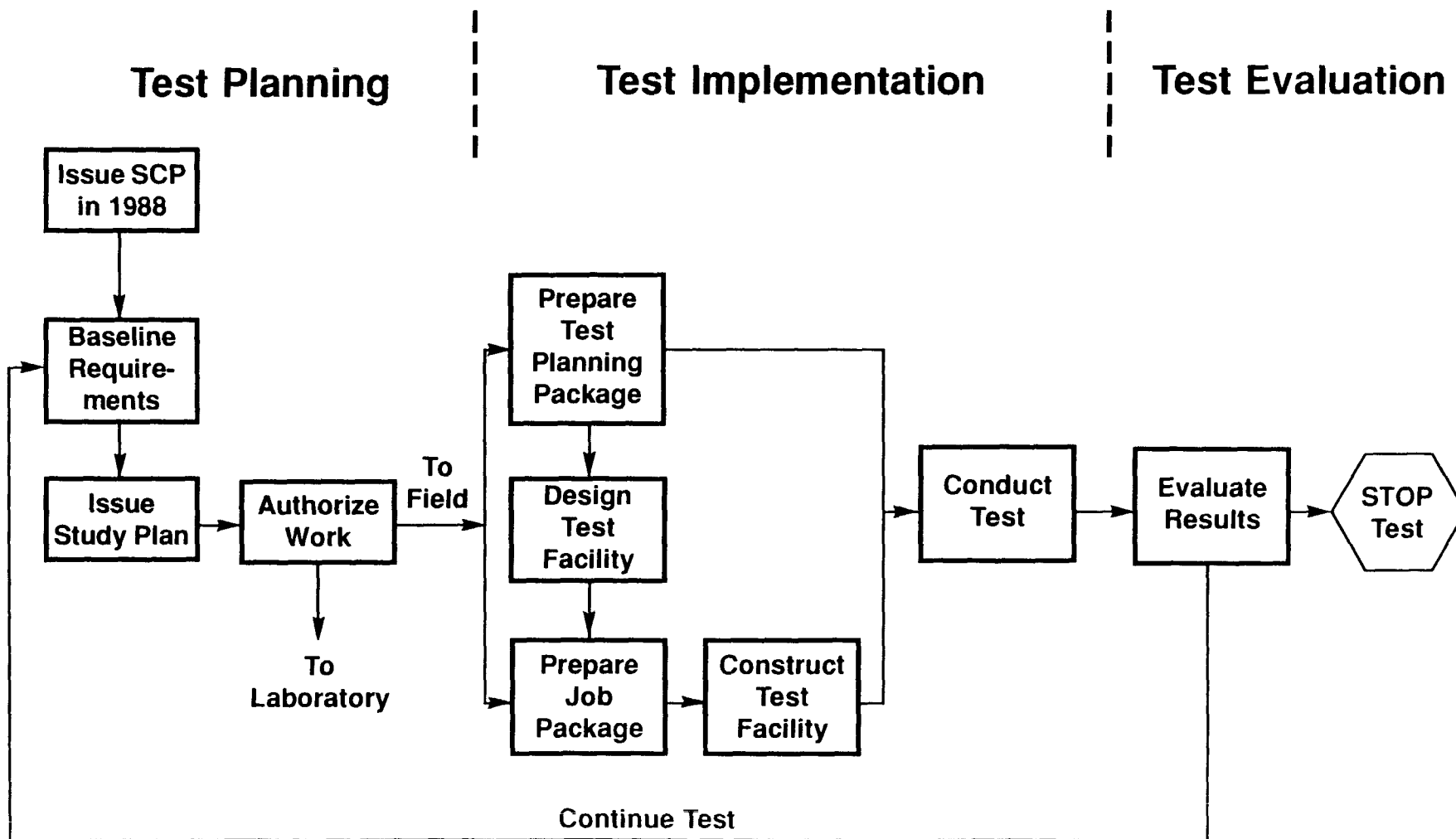
**PRESENTER'S TITLE  
AND ORGANIZATION:**

**ACTING DIRECTOR,  
REGULATORY AND SITE EVALUATION DIVISION  
YUCCA MOUNTAIN SITE CHARACTERIZATION PROJECT  
LAS VEGAS, NEVADA**

**PRESENTER'S  
TELEPHONE NUMBER:      (702) 794-7613**

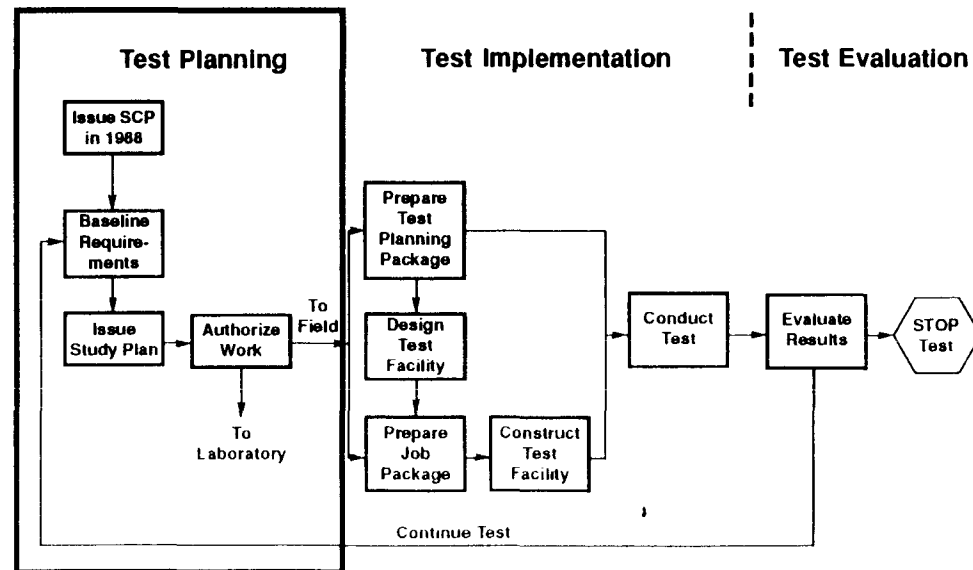
**LAS VEGAS, NEVADA  
OCTOBER 19-20, 1993**

# Testing Phases



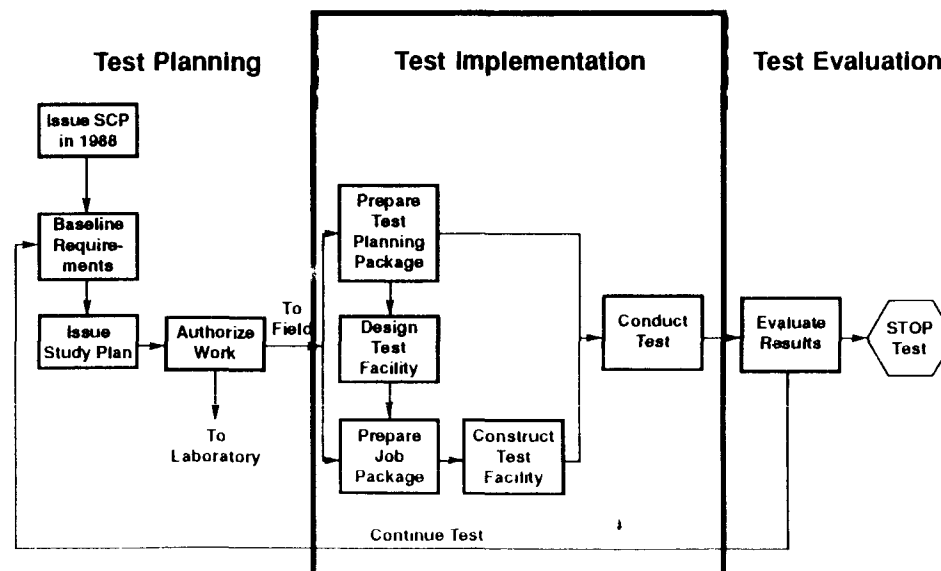
# Test Planning

- Analyze regulations
- Develop strategy to resolve regulatory issues
- Outline testing program
- Provide additional detail on individual studies
- Can be accomplished months to years before fielding a test



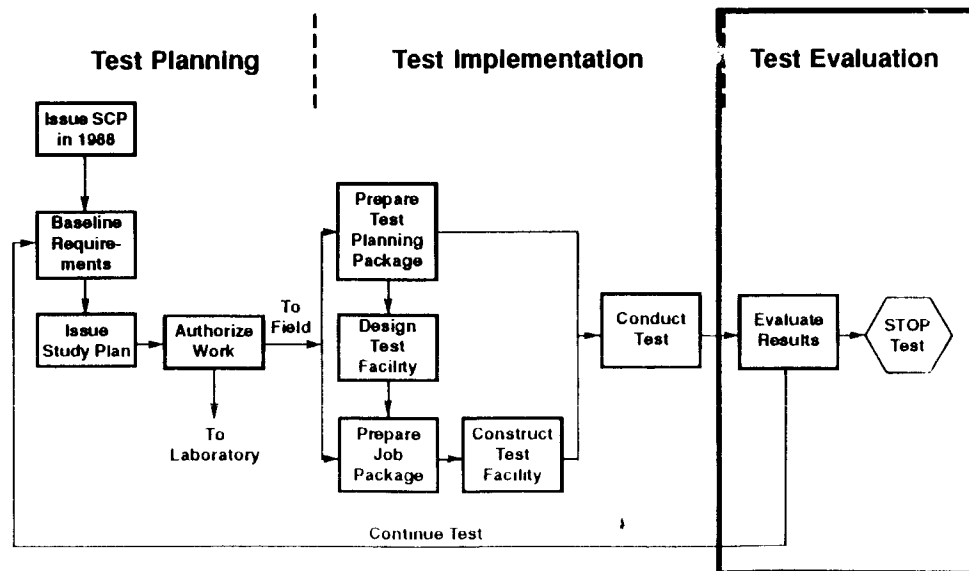
# Test Implementation

- **Prioritization is based on Project guidance, technical data needs, and resources**
- **Specific work instructions are developed within months or weeks of actual start of testing**
- **Tests are conducted according to work plans**

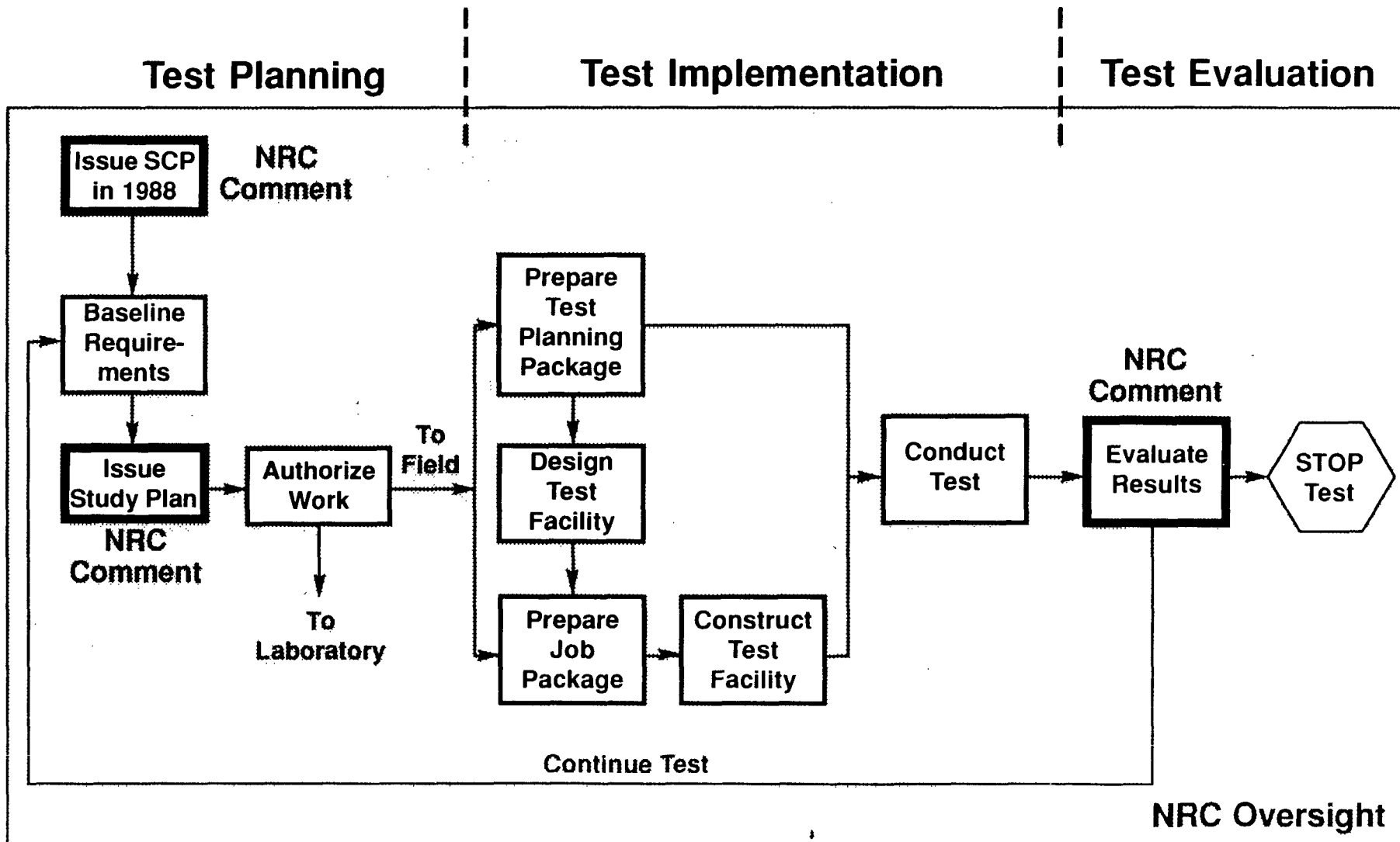


# Test Evaluation

- Data from individual tests are evaluated and results are fed back to guide subsequent testing
- Data are evaluated by a variety of end users
  - Performance assessment
  - Design
  - Regulatory
- Decisions are made whether to continue, to modify, or to stop a testing program



# Testing Phases



# Conclusion

- **For most of the two days, we will be discussing the middle of the process -- test implementation**
  - **Surface-based testing**
  - **Underground testing**
- **An important part of the process is performed before testing is implemented -- test planning**
- **An equally important part of the process is performed after testing is completed -- test evaluation**