

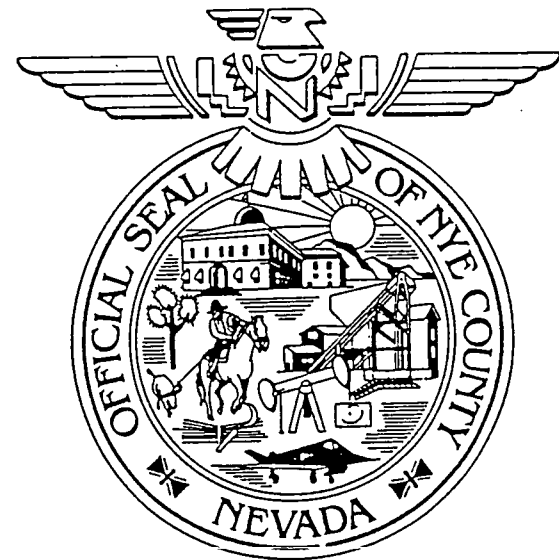
# ***Nye County Nuclear Waste Repository Project Office***

---

## **SOCIOECONOMIC PROGRAM SUMMARY**

Prepared for:  
Nye County Nuclear Waste Repository Project Office  
P.O. Box 1767  
Tonopah, Nevada 89049

Prepared by:  
Planning Information Corporation  
1836 Grant Street  
Denver, Colorado 80203



***Introduction to Socioeconomic Program***

---

# **UNIQUE ASPECTS OF THE YUCCA MOUNTAIN PROJECT**

- **As the first of its kind, it is difficult to define all dimensions and predict all of the potential effects.**
- **Schedule and design are evolving and will continue to evolve.**
- **The time-line is long: 10 years to licensing; another 10 years until construction is completed; 40 year operational life; 10 years until closure — the half-life of plutonium is 10,000 years.**
- **Each aspect compounds the uncertainty inherent in socioeconomic impact assessment.**

***Introduction to Socioeconomic Program***

---

# **PRINCIPLES OF SOCIOECONOMIC IMPACT ASSESSMENT**

- **Inventory current conditions in the study area (the “baseline”).**
- **Project the baseline without the project (the “baseline projection”).**
- **Describe the project in socioeconomic terms.**
- **Project conditions “with project.”**
- **Contrast baseline and with-project projections to identify impacts.**
- **Develop and implement programs to avoid, manage, and mitigate impacts, and maximize benefits.**
- **Repeat the cycle over time and as circumstances change.**

***Introduction to Socioeconomic Program***

---

# **SOCIOECONOMIC PROGRAM DESCRIPTION**

- **The program accounts for uncertainty and the repository's long time line.**
- **The program develops monitoring and assessment *systems*, as well as conducting periodic impact assessments.**
- **The program develops detailed information about unique aspects of Nye County and its communities.**
- **The program creates an information base for use in future impact assessments.**

Nye County Repository Socioeconomic Program

*Introduction to Socioeconomic Program*

---

**ELEMENTS AND SUBJECT AREAS OF THE  
SOCIOECONOMIC PROGRAM**

***Monitoring of Community Conditions***

---

**ECONOMIC AND DEMOGRAPHIC MONITORING**

- **Develops or compiles information on basic community characteristics.**
- **Focuses on historical and current information on population, housing, employment, income, education, seasonal visitors, and tourism.**
- **Because of rapid change in county and community population and business, these databases are updated on a quarterly basis.**
- **The annual report on *Socioeconomic Conditions and Trends* accumulates data for analysis and assessment — but “popularizes” the data, too.**
- **An annual survey targets “snowbirds,” who are economically significant and vulnerable to impact — as are tourists, travelers, and retirees.**
- **Monitoring information “spins off” to other arenas, in and out of the repository program — to procurement outreach, public outreach, and county planning.**

***Monitoring of Community Conditions***

---

**LOCAL GOVERNMENT FACILITY, SERVICE AND FISCAL MONITORING**

- Long-term repository assessment needs determined the data requirements.
- Existing Nye County data is collected and maintained as a database.
- The Facility, Service and Expenditure Information System (FSEIS) uses standardized definitions of functions, objects and funds.
- FSEIS data is updated annually and subjected to local agency review and modification.
- The system can be incorporated into an overall county MIS program.

***Monitoring of Community Conditions***

---

## **COMPUTER-BASED MAPPING (GIS)**

- **We have used a “bootstrap” approach combined with in-house data development efforts to develop a geographic information system (GIS).**
- **Local involvement by government personnel and local citizens is an integral part of the GIS effort.**
- **ARC/INFO software is used because it integrates data well and is used or will be acquired by other affected governments.**



***Community Studies***

---

# **ECONOMIC POTENTIALS STUDIES**

- **Studies have been prepared for Tonopah, Beatty, Amargosa Valley, Pahrump, and Northeastern Nye County.**
- **Each study inventories historical and current economic conditions, and identifies future economic development potentials.**
- **Then economic development resources and constraints are discussed.**
- **The results have been used as inputs to the economic/demographic projection and assessment model.**

***Community Studies***

---

# **CALIENTE RAIL SPUR ASSESSMENT**

- **Nye County's perspective, not DOE's, drives this initial impact assessment.**
- **It prototypes an approach for assessing repository components:**
  - **Describe the component**
  - **Identify and screen relevant dimensions and issues**
  - **Complete preliminary impact assessment**
  - **Outline concerns/options for Nye County**
  - **Define economic development linkages**
  - **Suggest policy and engagement options.**
- **Applications both support and go beyond the socioeconomic program:**
  - **Geographically accurate visualization of the alignment**
  - **Insights into the basic configuration (single vs. double line)**
  - **Identifies potential land use and economic conflicts**
  - **Highlights DOE's treatment of TTR/Nellis/NTS**
  - **Identifies need for emergency management coordination and interaction**
  - **Illustrates opportunities for Nye County involvement.**

***Socioeconomic Projection and Assessment Systems***

---

**ECONOMIC AND DEMOGRAPHIC PROJECTION MODEL**

- **This system of models, analyses, and databases reflects distinctive Nye County characteristics in community-level detail.**
- **The impact of any specified economic change can be assessed — e.g., repository site characterization, Bond Gold, tourism development, changes at NTS/TTR.**
- **Permits flexibility in assumptions about workforce composition, residency, earnings, and living arrangements.**
- **“Local intelligence” on 60 key current or prospective economic activities is considered explicitly.**
- **Scenarios can systematically consider regional economic trends or specified local characteristics and stimuli.**

***Socioeconomic Projection and Assessment Systems***

---

# **LOCAL GOVERNMENT FACILITY, SERVICE AND FISCAL PROJECTION MODEL**

- **Local government operations and financing are projected based on economic, demographic, and land use scenarios.**
- **Expenditure projections are based on current agency structure, with a town orientation.**
- **Revenue projections must include a projection of state economic and demographic conditions as well as local conditions.**
- **Alternative standards should be considered in projecting future expenditures, particularly in repository-related scenarios requiring additional transportation, emergency management, and other capital and operating requirements.**

***Baseline (Without Project) Projections and Analysis***

---

# **BASELINE ECONOMIC AND DEMOGRAPHIC PROJECTIONS**

- **This study applies the Nye County economic-demographic projection model system (SLED2).**
- **Three “runs” produce “reference,” “low reference,” and “high reference” projections of economic and demographic conditions in the absence of the repository.**
- **Initial runs of the system as calibrated for application in Nye County involved substantial internal review, special investigation, and analysis.**
- **Through special analysis and modeling, retirement migration and out-commuting — key economic “drivers” in Pahrump that are usually not specified in economic models — are given systematic consideration.**

***Baseline (Without Project) Projections and Analysis***

---

# **BASELINE FACILITY, SERVICE AND FISCAL PROJECTIONS**

- **SLED2 reference scenarios for 1993 to 2005 drive the first run.**
- **Realistic forces drive expenditures and revenues — e.g., mining activity drives net proceeds; resident and visitor population and area served drive sheriff's requirements.**
- **Alternative projections can assume and account for facility improvements and changes in transportation and solid waste plans.**
- **Short-term revenue and expenditure projections are consistent with recent history.**

***Project Description***

---

## **REPOSITORY MONITORING**

- **Collects, compiles, and analyzes a comprehensive database on DOE's high-level waste (HLW) repository program.**
- **DOE is responsible for describing its own project in socioeconomic terms, so the socioeconomic program assembles, compiles, and analyzes whatever information DOE presents.**
- **Nye County also interacts with DOE to improve the scope and quality of socioeconomic information about the project.**
- **Other information is compiled from DOE or other sources — information that DOE may ignore but that contributes to complete oversight of the HLW program and project.**

***Project Description***

---

# **PROJECT DESCRIPTION SCENARIO DEVELOPMENT SYSTEM**

- **Provides the “scenarios” needed for socioeconomic impact analysis by integrating two models.**
- **The national program model accounts for 70+ years of site characterization, construction, operations; current and future inventories of wastes; schedules for acceptance, interim storage, and emplacement; shipments by rail or truck; and critical path issues during development.**
- **The Nevada project model accounts for workforce, purchasing, and transportation issues in southern Nevada and in Nye County and its communities.**
- **The models organize and fill gaps in DOE’s program and project descriptions.**



DOCUMENT DATE	SOCIOECONOMIC DOCUMENTS PREPARED FOR NYE COUNTY'S NUCLEAR WASTE REPOSITORY PROJECT OFFICE BY PLANNING INFORMATION CORPORATION	CALL #, FILE #, OR ELECTRONIC COPY
---------------	--	------------------------------------

## PROGRAM COMPONENT: MONITORING COMMUNITY CONDITIONS:

17-Aug-93	"Business List Data Base, Nye County, Nevada, First Quarter 1993"	NV-BUS-B673A Disk 48A
02-Sep-93	"Business List Data Base, Nye County, Nevada, Second Quarter 1993"	NV-BUS-B674A Disk 51A
14-Oct-92	"Business List Database, Nye County, Nevada"	
21-Dec-92	"Business List Database Nye County, Nevada, Third Quarter 1992 Report"	NV-BUS-B671 Disk 15
17-Jun-93	"Business List Data Base, Nye County, Nevada, Fourth Quarter 1992 Report"	NV-BUS-B672 Disk 42
17-Aug-93	"Business List Data Base, Nye County, Nevada, First Quarter 1993 Report"	NV-BUS-B673 Disk 48
02-Sep-93	"Business List Data Base, Nye County, Nevada, Second Quarter 1993 Report"	NV-BUS-B674 Disk 51
21-Jul-94	"Business List Data Base, Nye County, Nevada, Fourth Quarter, 1993 Update"	Library
18-Dec-90	"Nye County, Nevada, Socioeconomic Conditions and Trends 1990"	NV-CEN-C66
01-Mar-91	"Manual of Sources: Nye County Conditions and Trends Report"	NV-SOC-S55 Disk 20
17-Apr-92	"Nye County, Nevada, Socioeconomic Condition and Trends 1991"	NV-SOC-C662
23-Sep-93	"Nye County, Nevada, Socioeconomic Conditions and Trends 1992"	NV-CEN-C662 Disk 54
01-Nov-89	"Nye County 1990 Census Project: Northern Nye County Book 8, Tonopah (Pages 1-24)" *	NV-CEN-N932
01-Nov-89	"Nye County 1990 Census Project: Northern Nye County Book 8, Tonopah (Pages 25-46)" *	NV-CEN-N931
01-Nov-89	"Nye County 1990 Census Project: Northern Nye County Book 2, Tonopah (Sierra Vista Estates)" *	NV-CEN-N933

\* Census data

DOCUMENT DATE	SOCIOECONOMIC DOCUMENTS PREPARED FOR NYE COUNTY'S NUCLEAR WASTE REPOSITORY PROJECT OFFICE BY PLANNING INFORMATION CORPORATION	CALL #, FILE #, OR ELECTRONIC COPY
01-Nov-89	"Nye County 1990 Census Project: Northern Nye County, Round Mountain, Gabbs, Carvers" *	NV-CEN-N934
28-Feb-90	"Nye County, Nevada, 1990 Census Project: Volume I Northern Nye Communities: Tonopah, Gabbs, Manhattan, Carvers, Hadley, Round Mountain Communities"	NV-CEN-N93 Disk 10
17-Sep-90	"Nye County 1990 Census Project: Documentation for Local Government Review Response Form, Form D74-B, Nevada Appendix. Maps of Southern Nye County (Book 1 of 2)" *	NV-CEN-N941 Disk 10
17-Sep-90	"Nye County 1990 Census Project: Documentation for Local Government Review Response Form, Form D74-B, Nye County Nevada Appendix. Maps of Southern Nye County (Book 2 of 2)" *	NV-CEN-N942 Disk 10
02-Oct-90	"Nye County 1990 Census Project: Local Government Review Response Final Report" *	NV-CEN-N67 Disk 10
26-Apr-91	"A Discussion of Differences Between the 1990 Census Population by Community and a Previous Estimate of Community Population in Nye County, Nevada" *	NV-CEN-D57 Disk 27
18-Aug-92	"Block Groups and Census BNAs for Southern Nye County" *	Nv-MAP-P091
27-Apr-92	"Nye County Census Enumeration Districts Map" *	NV-MAP-P095
01-Sep-92	"Nye County Census Enumeration Districts Map" *	NV-MAP-P087
06-Apr-93	"1990 Census Data Profiles: Nye County, Nevada and its Communities" *	NV-CEN-C463 Disk 10A
22-Dec-92	"Nye County Fiscal Monitoring Program: 1992 Status Report"	NV-FIS-F67
31-Jan-94	"Parcel Addressing Pilot Project"	8.8.1
01-Nov-89	"Annual Population Estimates: 1985 - 1989 Nye County and Nye County Communities"	NV-CEN-N66 Disk 15
07-May-92	"Population Estimates for 1991 Nye County, Nevada"	NV-DEM-P662
13-Oct-92	"Population Estimates through the Second Quarter, 1992 Nye County, Nevada"	NV-DEM-P663 Disk 15
28-Jan-93	"Population Estimates Through the Third Quarter, 1992 Nye County, Nevada"	NV-DEM-P664 Disk 15
06-Apr-93	"Population Estimates Through the Fourth Quarter, 1992 Nye County, Nevada"	NV-DEM-P665 Disk 56

\* Census data

DOCUMENT DATE	SOCIOECONOMIC DOCUMENTS PREPARED FOR NYE COUNTY'S NUCLEAR WASTE REPOSITORY PROJECT OFFICE BY PLANNING INFORMATION CORPORATION	CALL #, FILE #, OR ELECTRONIC COPY
08-Jun-93	"Population Estimates Through the First Quarter, 1993 Nye County, Nevada"	NV-DEM-P666 Disk 46
12-Nov-93	"Population Estimates Through the Third Quarter, 1993, Nye County, Nevada"	NV-DEM-P668 Disk 60
20-Aug-93	"Population Estimates Through the Second Quarter, 1993 Nye County, Nevada"	NV-DEM-P667 Disk 48
23-Feb-94	"Population Estimates Through 4th Quarter, 1993 Nye County, Nevada"	NV-DEM-P669
20-Aug-94	"Population Estimates Through First Quarter, 1994, Nye County, Nevada"	NV-DEM-P67
03-May-93	"1993 Recreational Vehicle Park Survey in Beatty and Pahrump, Nevada"	NV-TRA-R47
31-Dec-93	"Sales Tax Licensed Businesses in Nye County (Report Number TX04)"	NV-SOC-S342
25-Nov-93	"Specialized Pahrump Mapping"	19.28
13-Jul-92	"Topics of Economic-Demographic Monitoring: Tourist-Travelers, Snowbirds, and Taxable Sales Report on Nye County Socioeconomic Program"	NV-TOU-S661 Disk 29

**PROGRAM COMPONENT: COMMUNITY STUDIES:**

12-Mar-92	"Amargosa Valley Economic Potentials"	NV-ECO-A321
27-Aug-92	"Beatty Economic Potentials Analysis"	NV-ECO-B321
10-May-93	"Emergency Management Conditions in Nye County"	NV-MAN-E47
28-Feb-92	"Nye County's Emergency Response Telephone System"	NV-PUB-N931
31-May-91	"Northeastern Nye County Long-Term Economic Potentials"	NV-ECO-N67
27-Oct-92	"Pahrump Economic Potentials Analysis"	NV-ECO-P33
31-Mar-92	"Tonopah Economic Potentials Analysis"	NV-ECO-T66
01-Apr-90	"Tonopah Public Utilities: Growth Potentials, 1990 - 2000"	NV-PUB-T66
03-Jun-91	"Tourism and Recreation Resources and Potentials in Southern Nye County"	NV-TOU-T69
11-Nov-94	"Recent Trends and Projections of Health Care Use, Nye County, Nevada"	4.8

**PROGRAM COMPONENT: SOCIOECONOMIC PROJECTION/ASSESSMENT SYSTEMS:**

20-Sep-83	"Comparison of YMP Spending and PETT Appraised Value"	19.22
-----------	---	-------

DOCUMENT DATE	SOCIOECONOMIC DOCUMENTS PREPARED FOR NYE COUNTY'S NUCLEAR WASTE REPOSITORY PROJECT OFFICE BY PLANNING INFORMATION CORPORATION	CALL #, FILE #, OR ELECTRONIC COPY
27-Jan-92	"Nye County Facility, Service, and Expenditure Information System: Installation and Use of the Nye County FSEIS Test Version 1.0"	NV-ECO-F341 Disk 21
15-Oct-92	"Nye County Expenditure Model: Description of the Model and Preliminary Model Output"	NV-ECO-M623 Disk 19
21-Dec-92	"Nye County Revenue Model Description of the Model and Preliminary Model Output"	NV-FIS-R48 Disk 19, 37
27-Jan-92	"Nye County Facility, Service, and Expenditure Information System"	NV-ECO-F34 Disk 21
26-Oct-92	"Nye County Expenditure Model Description of the Model and Preliminary Model Output"	NV-ECO-M623 Diskettes #36
01-Jul-92	"Standards of Operation and Performance for Local Governments"	NV-PLA-036
19-Mar-92	"System for Local Economic-Demographic Development Projection and Assessment (SLED2)"	NV-ECO-S45 Disk 17

**PROGRAM COMPONENT: REPOSITORY PROJECT DESCRIPTION:**

09-Dec-91	"DOE/YMPO Quarterly Data Reports" *	5.1.9
18-Mar-92	"DOE/YMPO Quarterly (Employment) Data Reports" *	5.1.9
25-Nov-92	"DOE/YMPO Quarterly Data Reports: Nye County Database and Applications" *	5.1.9 Disk 47
01-Mar-93	"DOE/YMPO Quarterly Data Reports: Nye County Database and Applications" *	5.1.9 Disk 61
18-Nov-93	"YMP- and NTS-Related Employment: Monitoring Through July 1993" *	NV-EMP-Y26 Disk 55
22-Jun-94	"YMP/NTS Employment Survey: July 1994"	Disk 65
01-Jun-94	"YMP Employment and Procurement Monitoring Observations"	4.7 Disk 65
20-May-94	"DOE/YMSCPO Procurement Data Report (March 1994): Observations"	4.7 Disk 65
27-Jan-93	"Project Description Scenario Development System (PDSDS) Version 2.0"	Model Disk 28
18-Apr-91	"Repository Project Description: FY 1991"	5.2.1
15-Sep-93	"Resources for Monitoring the Repository Program and Project"	NV-HAZ-R37

\* These reports are compilations and analyses of YMP employment and procurement data from Nye County's perspective.

DOCUMENT DATE	SOCIOECONOMIC DOCUMENTS PREPARED FOR NYE COUNTY'S NUCLEAR WASTE REPOSITORY PROJECT OFFICE BY PLANNING INFORMATION CORPORATION	CALL #, FILE #, OR ELECTRONIC COPY
19-Oct-93	"The Flow of Funds in the OCRWM Program and Yucca Mountain Project: Monitoring Through FY 1992"	NV-SOC-F68 Disk 53
14-Oct-91	"Yucca Mountain Repository Scenario System Background, Summary, and Progress Report"	NV-SOC-R461 Disk 7

**PROGRAM COMPONENT: BASELINE (WITHOUT PROJECT)**

25-Mar-93	"Baseline Economic and Demographic Projections: 1990-2010 Nye County and Nye County Communities"	NV-ECO-B37 Disk 42
12-Nov-93	"Baseline Facility, Service, and Fiscal Projections for Nye County and Nye County Communities, 1991-2005 (Appendices)"	NV-ECO-B371 Disk 57

**PROGRAM COMPONENT: TRANSPORTATION STUDIES**

01-Oct-92	"A Socioeconomic Assessment of the Proposed Caliente Rail Spur"	NV-TRA-C341 Disk 19
25-Aug-92	"Road Inventory Pilot Project" *	NV-TRA-R626

**MAPS:**

19-Mar-92	"Amargosa Valley Town Base Map, Revisions Version 5"	NV-MAP-P072
19-Mar-92	"Ash Meadows National Wildlife Refuge Map, Version 1"	NV-MAP-P075
01-May-91	"Draft of Beatty Vicinity Map"	284-002-003-01
01-Apr-92	"Beatty Parcel Map"	NV-MAP-P064
01-Apr-92	"Beatty Town Center Map, Version 3"	NV-MAP-P077
02-Dec-92	"Beatty Town Base Map"	284-002-001-04
02-Dec-92	"Town of Beatty, Nevada, Town Center"	284-002-001-04
01-Jan-92	"Beatty, Detailed Map"	285-007-045-01
03-Feb-93	"Base Map for Beatty, Tax District"	289-002-004-1
01-Oct-92	"Caliente Rail Corridor Map"	274-012-003-01
25-Mar-93	"Documentation for Nye County GIS Map Coverages"	8.8
01-May-92	"Domestic Well Test Map"	286-007-003-03
01-Nov-92	"Hydrologic Groups Map"	NV-MAP-P060
12-Sep-92	"Map of Railroad Valley Ranches"	289-007-040-01

\* Demonstration of the capture of various road data (such as road width, surface, etc.) in GIS and data base format.

DOCUMENT DATE	SOCIOECONOMIC DOCUMENTS PREPARED FOR NYE COUNTY'S NUCLEAR WASTE REPOSITORY PROJECT OFFICE BY PLANNING INFORMATION CORPORATION	CALL #, FILE #, OR ELECTRONIC COPY
01-Dec-92	"Map of Recommended Land Fills and Transfer Stations in Nye County"	289-015-001-01
16-Sep-92	"Map of Potential Nevada Transportation Routes"	NV-MAP-P088
27-Jul-92	"Map of Nye County Roads"	286-010-001-01
08-Sep-92	"Map of Nye County Voting Precincts, 1992"	NV-MAP-P065
01-May-91	"Map of Industrial Minerals of Nye County"	283-007-031-01
01-Aug-90	"Map of Land Use Restrictions"	24.2-013-006-01
30-Dec-92	"Nye County Base Map"	285-008-001-07
01-Apr-90	"Map of Pahrump, Covenant, Condition, & Restriction (CC&R) Zones"	24.2-013-002-01
01-Apr-90	"Pahrump CNUC Certified Utility Area"	24.2-013-004-01
01-Jun-90	"Pahrump Flood Zones Map"	24.2-013-008-01
01-Aug-90	"Map of Pahrump Residence Locations"	24.2-013-010-01
01-Aug-90	"Pahrump Private Land Ownership Patterns"	24.2-013-001-02
01-Aug-90	"Pahrump Agriculture Zones Map"	24.2-013-007-01
01-Aug-90	"Section Maps of Pahrump, Pahrump Growth Management Options Study"	NV-MAP-P034
01-Sep-90	"Pahrump Land Use Restrictions Map"	24.2-013-003-01
16-Jul-91	"Pahrump Panel Maps"	284-001-017-023-02
11-Apr-92	"Pahrump Subdivision Map"	285-007-002-02
09-May-92	"Flood Insurance Rates Maps for Pahrump"	NV-MAP-P076
18-Aug-92	"Map of Pahrump Precincts"	NV-MAP-P097
01-Oct-92	"Pahrump Detail Map"	285-007-041-01
01-May-91	"Map of Precious Metals of Nye County"	283-007-032-01
01-May-91	"Map of Surface Ground Water in Nye County"	283-007-027-01
17-Apr-93	"Round Mountain, Nevada, Town Base Map"	NV-MAP-P070
13-Oct-92	"Map of Round Mountain"	284-003-001-07
02-Sep-92	"Smoky Valley, Nevada, Base Map"	287-011-004-01
01-Jan-93	"Map of Smoky Valley Ranches"	289-007-039-01
01-Aug-90	"Soils: Shrink/Swell Potential Map"	NV-MAP-P082

DOCUMENT DATE	SOCIOECONOMIC DOCUMENTS PREPARED FOR NYE COUNTY'S NUCLEAR WASTE REPOSITORY PROJECT OFFICE BY PLANNING INFORMATION CORPORATION	CALL #, FILE #, OR ELECTRONIC COPY
01-May-91	"Thermal Waters in Nye County"	283-007-026-01
16-Mar-92	"Town of Tonopah, Nevada, Town Boundary Base Map"	285-009-002-01
16-Mar-92	"Draft of Town Center Base Map for Tonopah"	285-009-008-01
01-Aug-92	"Map of Tonopah Precincts"	NV-MAP-P092
01-Jan-92	"Map of Tonopah, Detail"	285-007-044-01

*Nye County, Nevada*  
*Nuclear Waste Repository Project*  
*Office*



Standard  
Socioeconomic Effects  
Presentation

United States  
Nuclear Waste Technical  
Review Board

January 10, 1995  
Beatty, Nevada



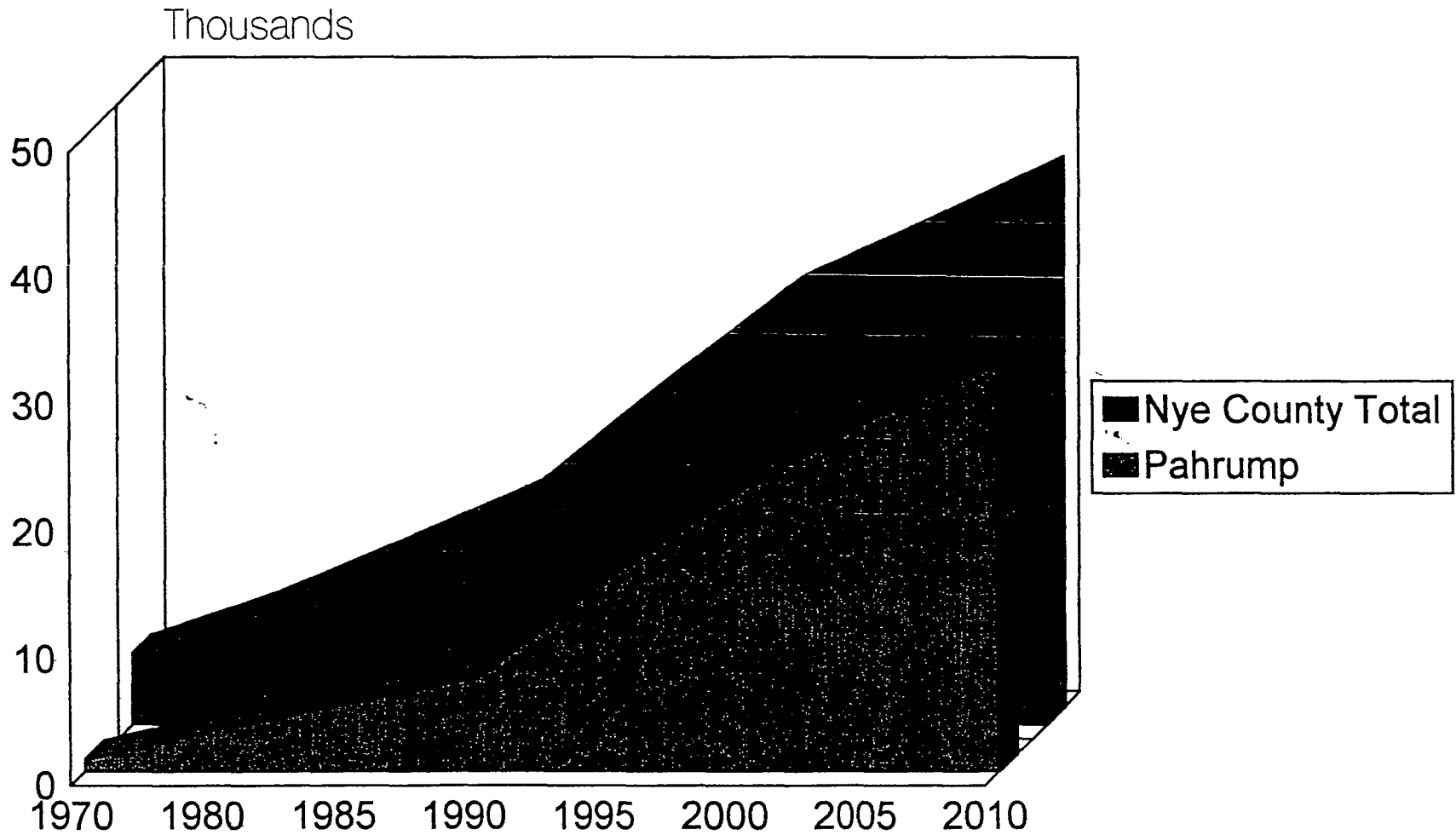
## ***Nye County Presentation Objectives***

- **Discuss Nye County Context**
- **Identify Nye County Socioeconomic Assessment Issues**
- **Describe Nye County Socioeconomic Program**
- **Recommendations**

## ***Nye County Context***

- Nye County is the 3rd largest county in the continental United States.
- 93 percent of Nye County land area is public land.
- 22 percent of Nye County land area has restricted access.

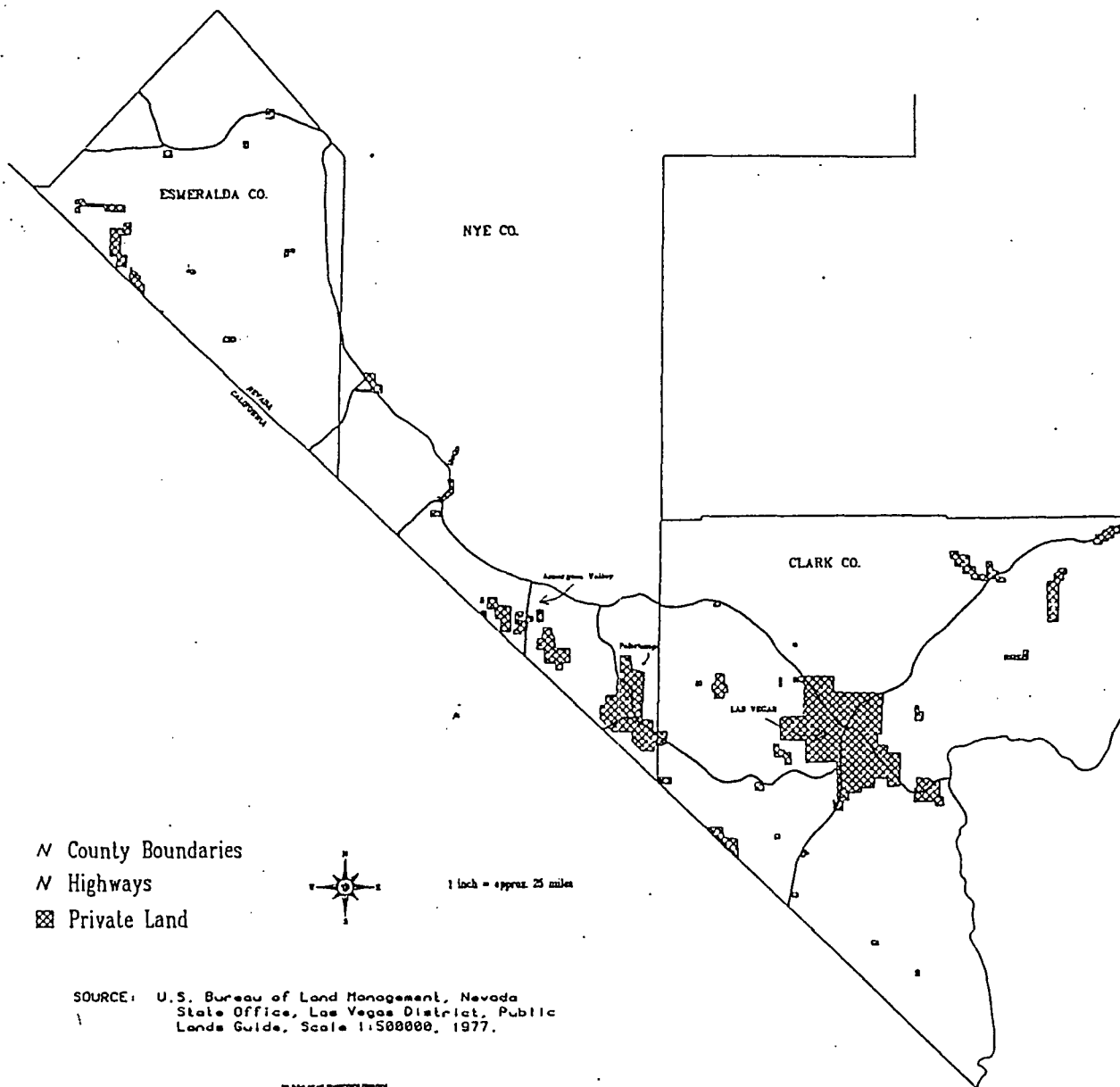
# *Nye County Population Growth*



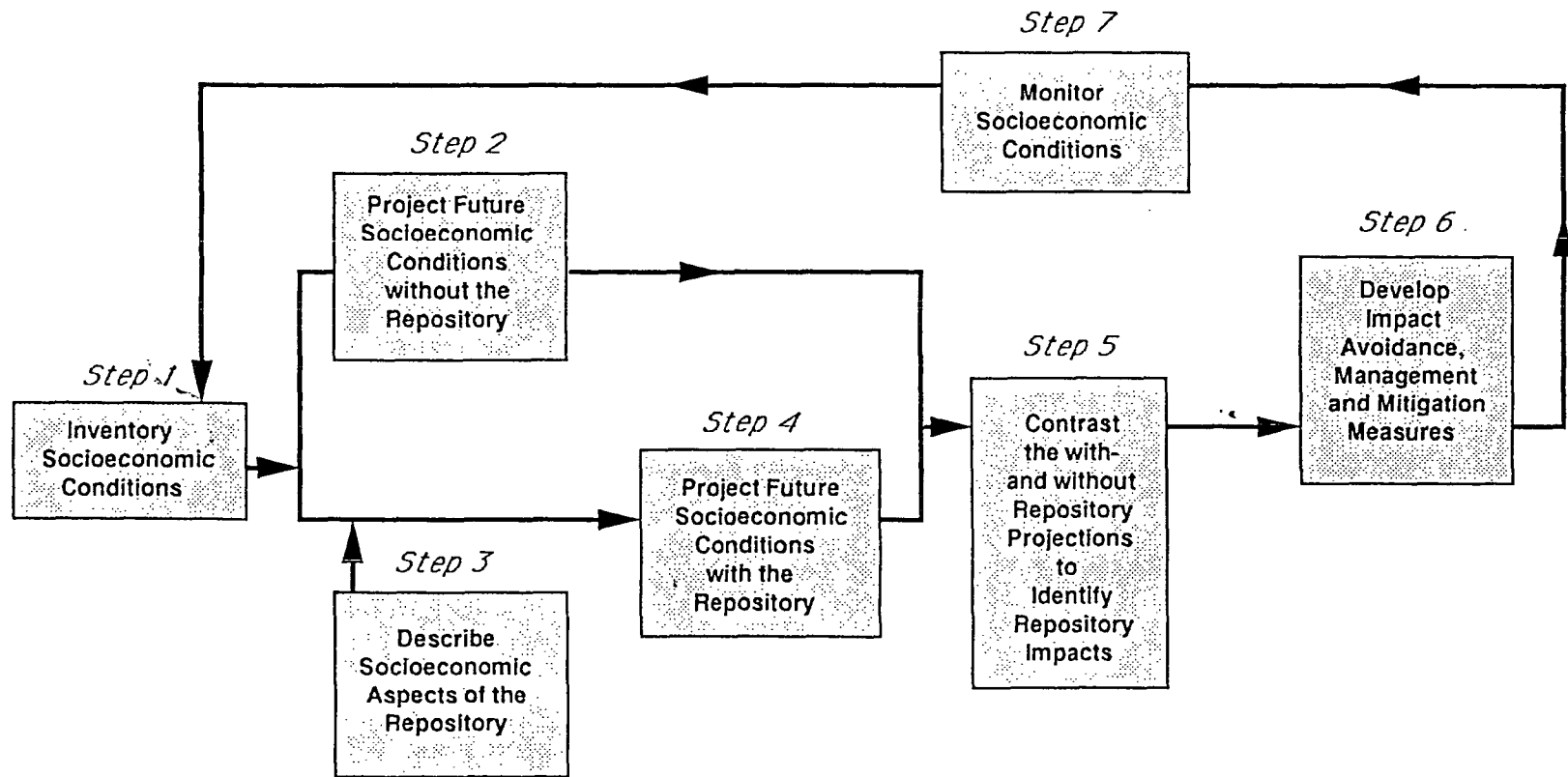
- Nye County is developing a tourism and recreation visitor economy.
- Given that Nye County contains much of the private land in western Nevada, there may be a substantial potential for population growth.

# MAJOR AREAS OF PRIVATE LAND

## SOUTHWEST NEVADA



# Socioeconomic Impact Assessment Process



## ***Socioeconomic Impact Assessment Issues***

- **The time line for site characterization and repository development and operation**
- **Lack of an integrated and fixed description for the repository project**

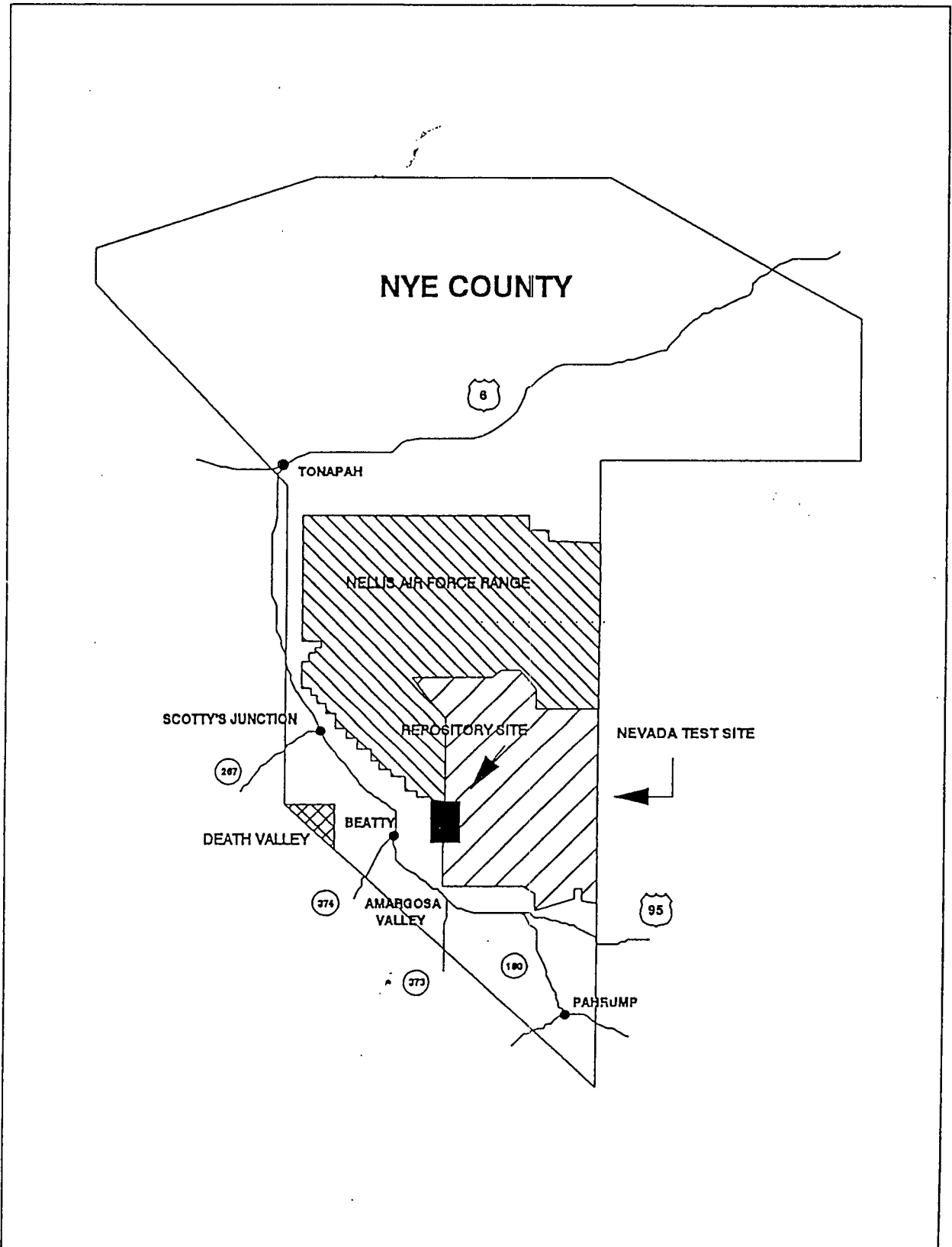
## ***Socioeconomic Impact Assessment Issues***

- **Uncertainty in the YMP**
  - **Schedule**
  - **Funding**
  - **Concept**
  - **Technology**
  - **Transportation**
  - **Safeguards**



## *Socioeconomic Impact Assessment Issues*

- Changing standards for local government service delivery
- The potential socioeconomic impacts of the repository must be considered in the context of the cumulative effects of the Federal Nuclear and Defense Complex within Nye County



## *Cumulative Effects of the Federal Nuclear and Defense Complex*

- Absorbs over 2 million acres or almost 20 percent of the county's total land area
- Shapes transportation and commerce in the county and state
- Current and future host to some of the most potentially hazardous and noxious activities in the country

## ***Cumulative Effects of the Federal Nuclear and Defense Complex***

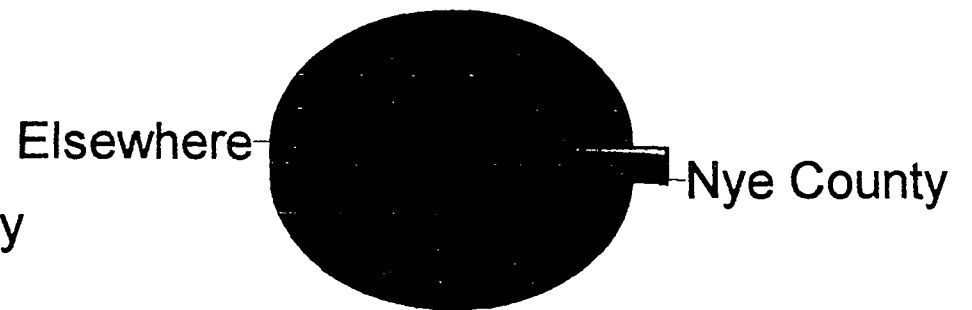
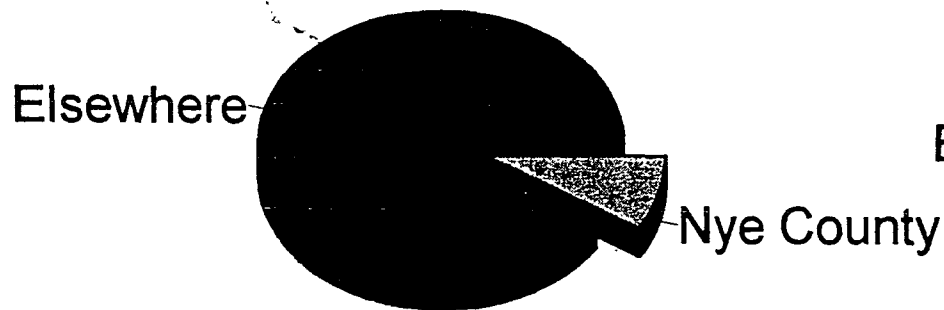
- Provides minor employment and economic benefits to the county
- Limits land use off-site
- The land would generate more economic activity to the county under alternate uses

**Nye County NWRPO  
NWTRB Presentation  
Standard Socioeconomic Effects**

---

***NTS Workforce Residency***

***NTS Procurement***



***YMSCP CONTINUES SAME  
INSTITUTIONAL POLICIES AS NTS***

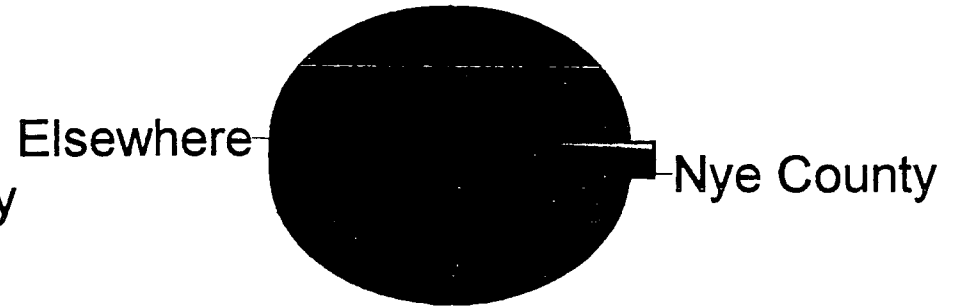
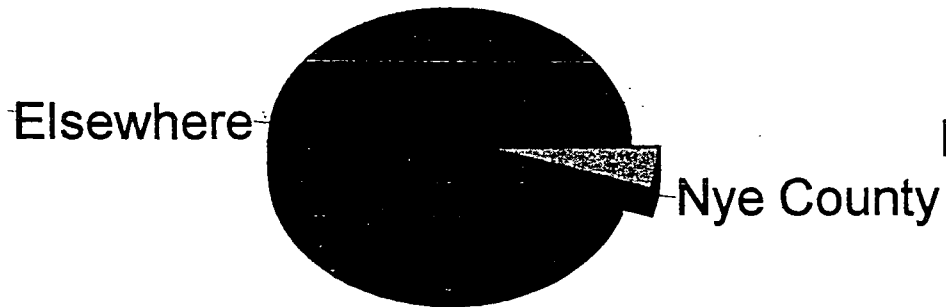
- Need to maintain readiness for testing; using same contractors (in some cases, same personnel)
- Subsidized busing
- Union halls in Las Vegas Valley
- Management & administration facilities in Las Vegas Valley
- No community development initiatives in Nye County
- Most procurement in Las Vegas Valley

**Nye County NWRPO  
NWTRB Presentation  
Standard Socioeconomic Effects**

---

***YMSCP Workforce Residency***

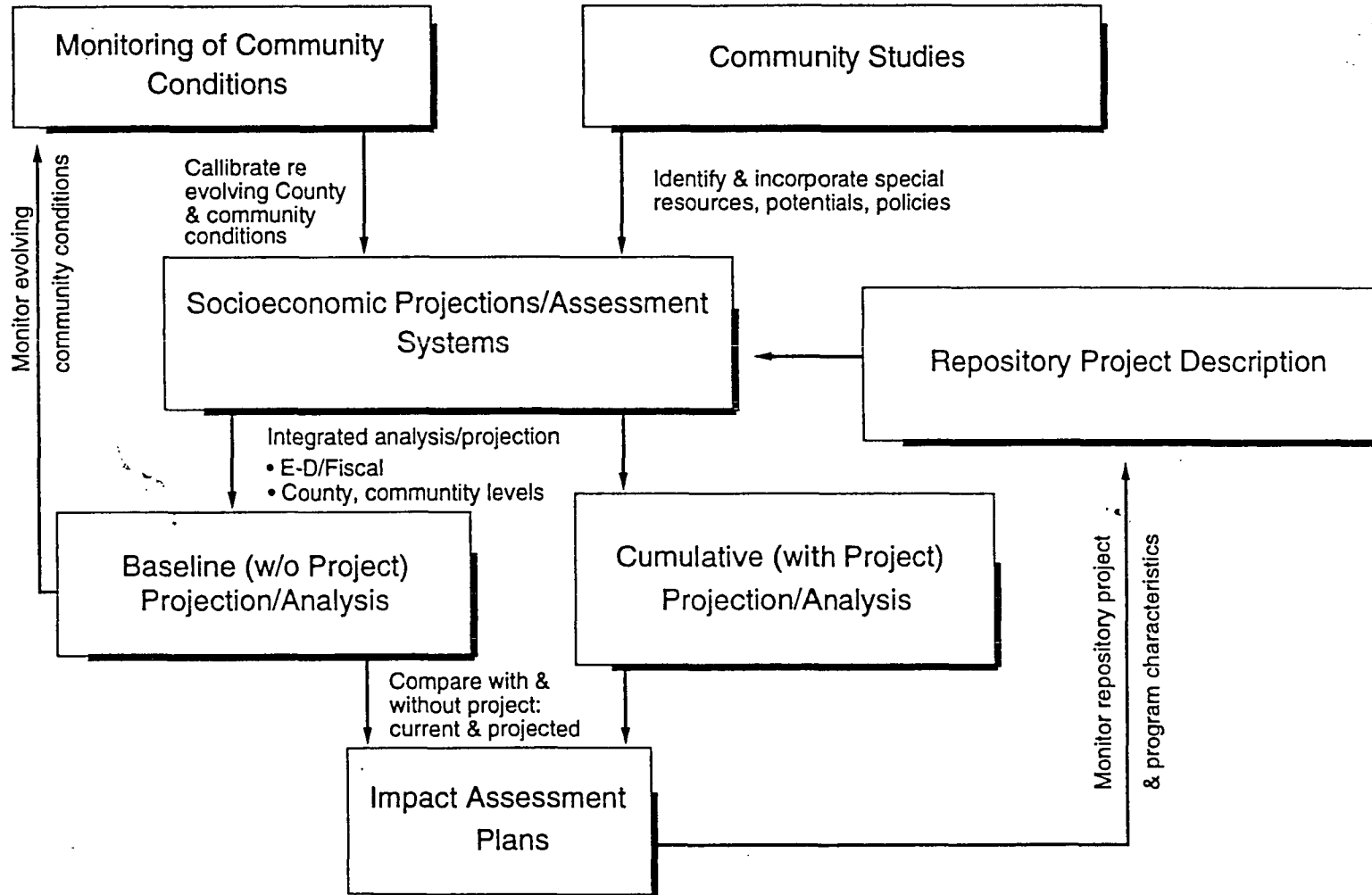
***YMSCP Procurement***



According to the Special Nevada Report published by the Department of Air Force with participation by DOE, Nye County's gross regional product would be up to \$180 million higher if the land withdrawn for NTS were available for multiple use and an additional \$29 million higher if the land withdrawn for Nellis Air Force Range were available for multiple use.



# NYE COUNTY NUCLEAR WASTE REPOSITORY PROGRAM: SOCIOECONOMIC ASSESSMENT SYSTEM



## *Nye County/DOE Socioeconomic Protocol*

- The socioeconomic protocol is one result of a larger formal interactions process
- Defines responsibility for socioeconomic data collection and analysis
- Designed to limit duplication and ensure that party with best access to data is responsible for collecting the data
- DOE and Nye County agree to calibrate assessment instruments with the same data and compare output

## ***Nye County/DOE Socioeconomic Protocol***

- **DOE has primary responsibility for collecting YMP information**
- **Nye County has primary responsibility for county economic, demographic, local government systems, and fiscal information**

*Nye County Socioeconomic Products: a resource  
for DOE and DOD impact assessment efforts*

- Programmatic Spent Fuel and INEL ER/WM EIS
- Special Nevada Report
- EIS for Relocation of 37th Tactical Fighter Wing

# *Nye County's Socioeconomic Assessment Recommendations*

1. The assessment should be honest about the implications of the time line and accept the fact that our ability to project both baseline conditions and impacts far into the future is limited.
2. The assessment should acknowledge that no clear and fixed description of the program exists or is likely to exist in the near future. DOE should participate with Nye County and other entities in an effort to develop realistic alternatives which could be used to examine the range of potential repository schedules, costs, configurations, etc.

# *Nye County's Socioeconomic Assessment Recommendations*

3. The assessment should assume tomorrow's local government service delivery standards in the analysis of fiscal impacts.
  
4. The assessment should thoroughly investigate socioeconomic sensitivities rather than conduct a mechanical assessment of impacts of a project that is evolving in a socioeconomic context which is also evolving.

# *Nye County's Socioeconomic Assessment Recommendations*

5. DOE should emphasize the development of mitigation measures to address sensitivities rather than address impacts that we can project today with our limited ability to describe the project and anticipate future socioeconomic conditions.
6. DOE should develop socioeconomic mitigation measures to account for the cumulative effects of federal facilities in Nye County.