

U.S. DEPARTMENT OF ENERGY  
OFFICE OF CIVILIAN RADIOACTIVE WASTE MANAGEMENT

**NUCLEAR WASTE TECHNICAL REVIEW BOARD**

**SUBJECT: PROGRAM OVERVIEW TO  
LICENSE APPLICATION**

**PRESENTER: DR. STEPHAN J. BROCOUM**

**PRESENTER'S TITLE  
AND ORGANIZATION: ASSISTANT MANAGER FOR SUITABILITY AND LICENSING  
YUCCA MOUNTAIN SITE CHARACTERIZATION PROJECT OFFICE  
LAS VEGAS, NV**

**TELEPHONE NUMBER: (702) 794-1359**

OCTOBER 9-10, 1996  
ARLINGTON, VA

# **Overview of Planning Status and Framework for FY 1997**

- **Planning in FY 1996**
- **Long Range Plan Through License Application**
- **Major Objectives in the Program Plan, Revision 1**
- **Management Efficiencies**

# Planning in FY 1996

- **Initiated program strategic planning to address Congressional re-direction and program needs**
- **Rationale for Program changes based on**
  - **Better understanding of site conditions**
  - **Development of an updated waste containment and isolation strategy**
  - **Need to update the regulatory framework to reflect better understanding of waste isolation needs and Congressional intent**
  - **Need to achieve a near-term viability assessment**
  - **Need for project management efficiencies**

# **Planning in FY 1996**

(continued)

- **Project has implemented the program's strategic objective in its planning process**
- **As part of the effort to streamline project management, a systematic planning process was initiated that focuses on enhanced integration**

# Planning in FY 1996

(continued)

- **This revised planning process is iterative and interactive between DOE and its contractors and among all technical disciplines**
  - **Provides detailed guidance from DOE to its contractors**
  - **Ensures proactive DOE management involvement**
  - **Ensures that all upper-level activities and milestones are logically tied and the lower-level activities are directly related**

# **Planning in FY 1996**

(continued)

- **Planning process resulted in**
  - **Development of Long Range Plan**
  - **Guidance for detailed FY 1997 Planning**
  - **Revision of program objectives and revised Program Plan**

# Long Range Plan

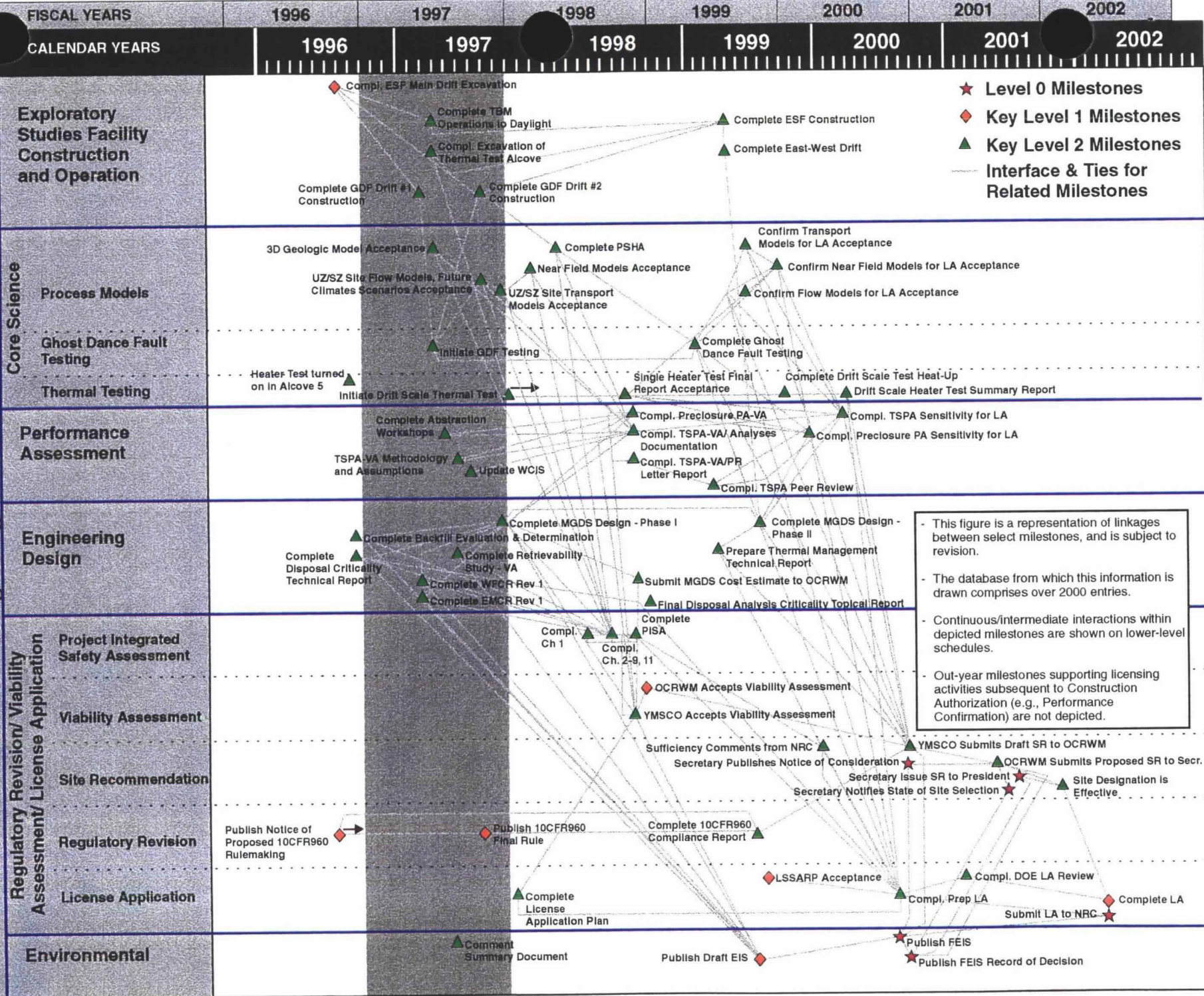
- **Developed a Long Range Plan (LRP) to license application submittal that further defines the supporting technical work to achieve the program plan objectives**
  - **2000 activities and milestones**
  - **4000 logic ties**
- **LRP extends to license application in 2002**
- **Used LRP to develop a detailed plan for FY 1997, the detailed plan has**
  - **5000 activities and milestones**
  - **7000 logic ties**

# **Interface Diagram for Key Milestones**

- **Diagram presents six technical areas and key milestones in each area**
- **Demonstrates complexity of program showing relationship of 65 major milestones**
- **Same diagram showing key milestones interfaces for major products will be shown in the FY97 overview briefing**

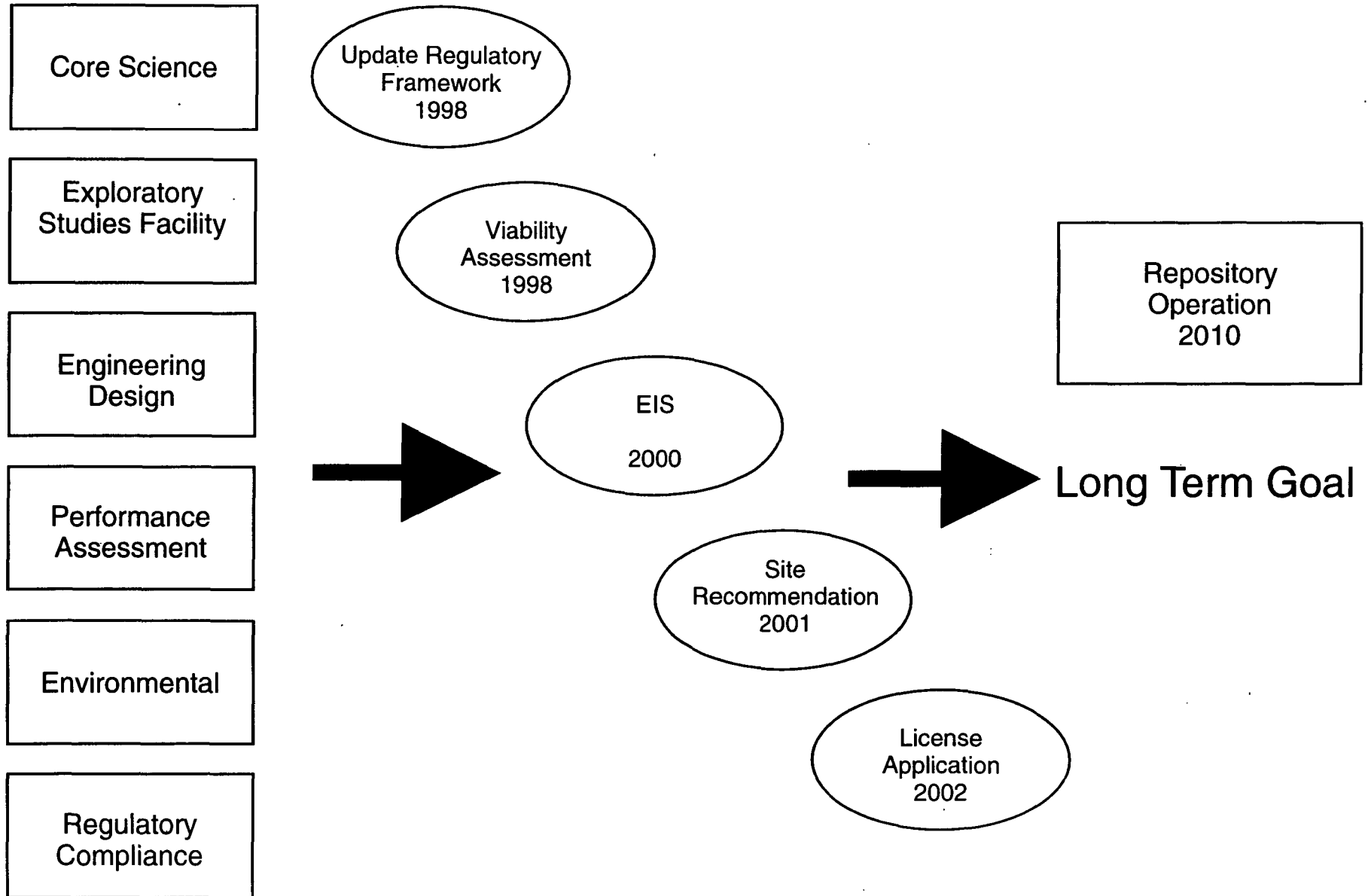


Key Levels 0-2 Milestones from Yucca Mountain Site Characterization Project Long-Range Plan



# Program Plan

## *Activities - and - Objectives*



***Supporting Activities***

***Near Term Objectives***

# **Activities in Support of the Regulatory Update Objective**

- **10 CFR Part 960**
  - **Plan to issue notice of proposed rulemaking to amend 10 CFR 960 in early FY 1997**
  - **Complete the public review and comment period in late 1997 and issue the final rule**
- **EPA Standard**
  - **Continue to interact with the EPA and NRC as they promulgate regulations specific to a repository at Yucca Mountain**

# **Activities in Support of the Regulatory Revision Objective**

(continued)

- **10 CFR Part 60**
  - **Provide DOE perspective for NRC consideration**
    - » **Emphasize and clarify reasonable assurance concept**
    - » **Eliminate overly prescriptive requirements**
    - » **Clarify preclosure and postclosure requirements**
    - » **Revise individual subsections to remedy specific issues**

# **Components of the Viability Assessment Objective**

- **Preliminary design concept for the critical elements for the repository and waste package**
- **Total System Performance Assessment, based on the design concept and the scientific data and analyses available by September 30, 1998, describing the probable behavior of the repository in the Yucca Mountain geological setting**
- **Plan and cost estimate for the remaining work required to complete a license application**
- **Estimate of the costs to construct and operate the repository in accordance with the design concept**

# **Activities Supporting The NEPA Process**

- **NEPA process has been re-started and will lead to the preparation and issuance of a draft Environmental Impact Statement in 1999**
- **Environmental Impact Statement will be finalized and a Record of Decision will be issued in 2000**

# **Activities Supporting Site Recommendation and License Application Objectives**

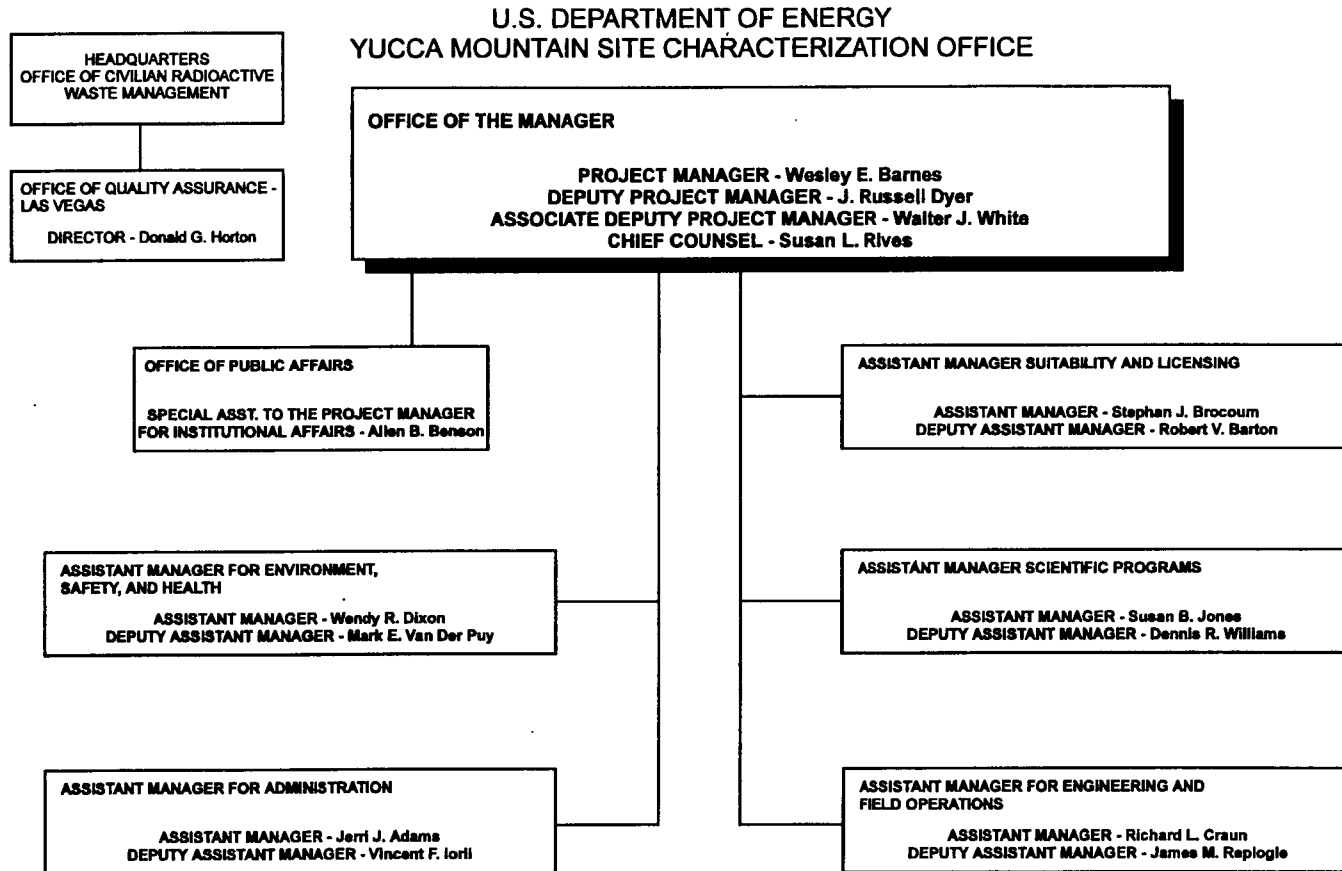
- **Initiate the review process for DOE's sufficiency of site characterization for licensing in 1999**
- **DOE will prepare the documentation that the Secretary of Energy will use for recommending the Yucca Mountain site for repository construction in 2001, if the site is found suitable**
- **If the site recommendation is approved, the license application will be finalized and submitted in March 2002**

# Management Efficiency

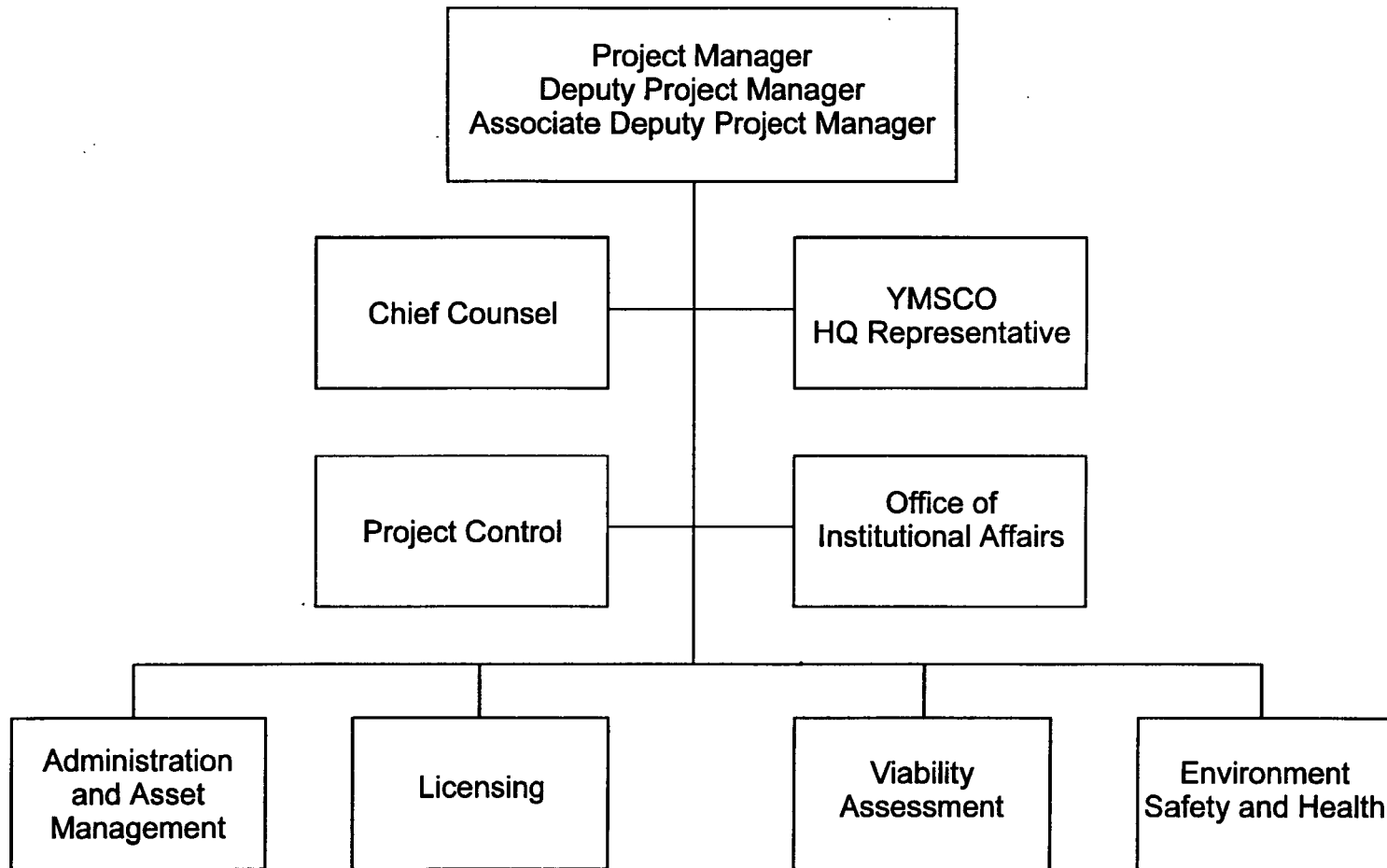
- **OCRWM has implemented actions to enhance management efficiencies**
  - **Consolidated and down sized Project participants**
  - **Awarded technical and management support services contract to aid DOE management and enhance DOE integration within OCRWM and the Project**
  - **Reorganized to be more efficient and product oriented**



# Organization Chart



# Organization Chart



# Summary

- **Project has focused site characterization activities based on**
  - **Better understanding of site performance**
  - **Better understanding of technical and program needs through license application**
  - **Detailed and integrated Long Range Plan**
- **Project has stable framework that includes systematic planning and enhanced management efficiencies**