

## Advanced Simulation Capability 1: Foundational Capability – GDSA Framework

U.S. Nuclear Waste Technical Review Board  
Fall Workshop  
November 3-4, 2021

Paul Mariner  
Sandia National Laboratories



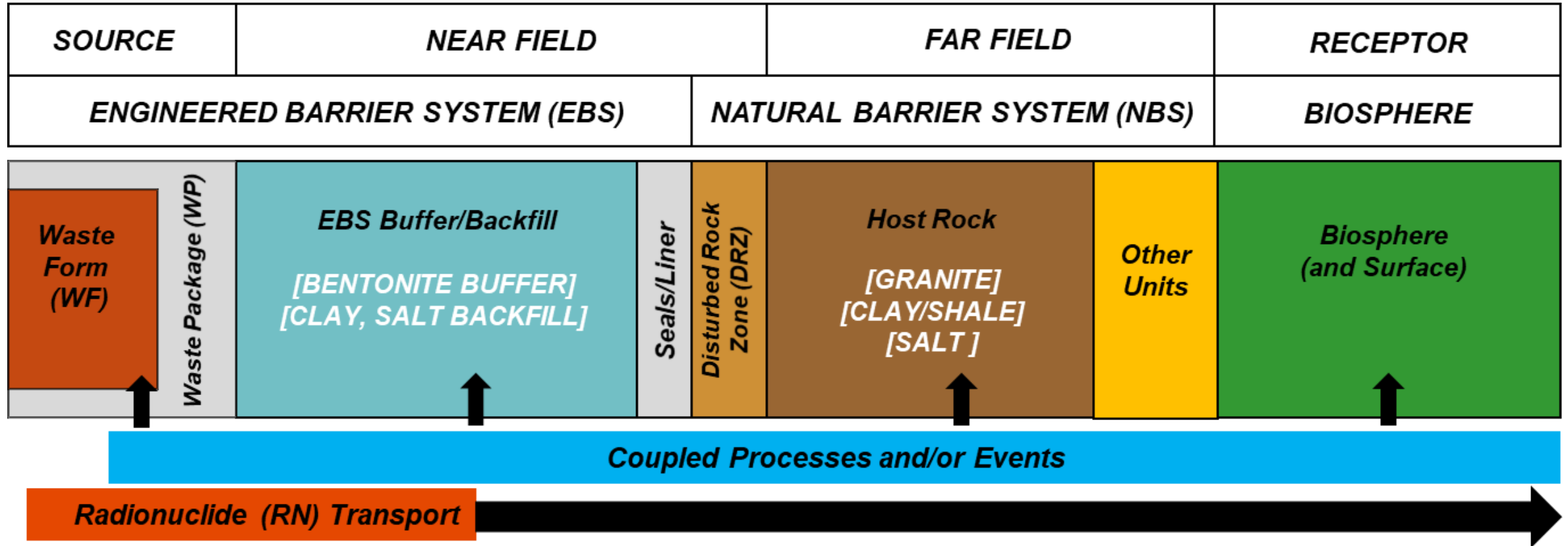
Sandia National Laboratories is a multi-mission laboratory managed and operated by National Technology and Engineering Solutions of Sandia LLC, a wholly owned subsidiary of Honeywell International Inc. for the U.S. Department of Energy's National Nuclear Security Administration under contract DE-NA0003525. SAND2021-13704 PE

- GDSA Framework
- GDSA Framework applications
- Performance metrics
- Capability development

# GDSA Framework

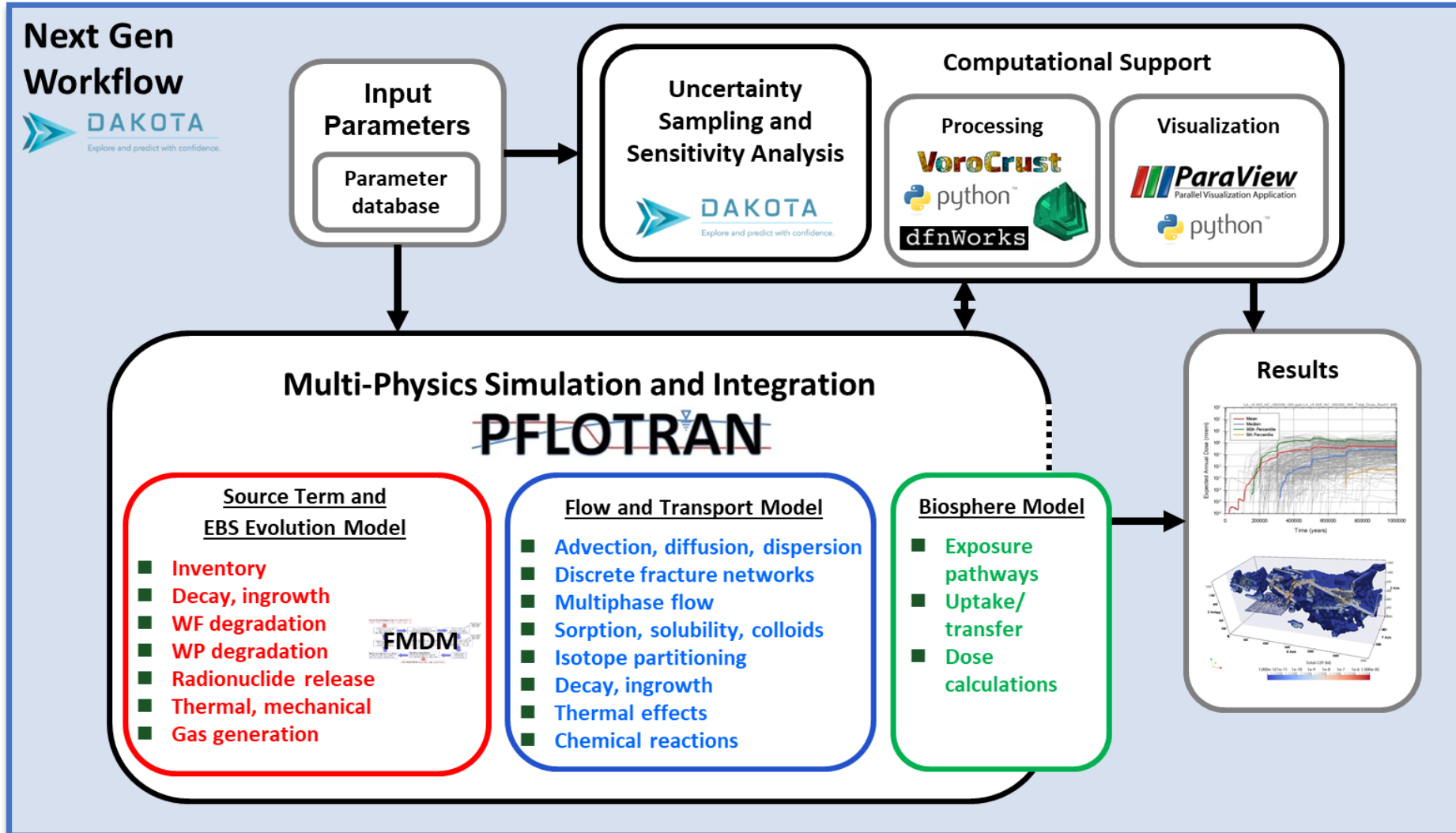
- Develop a disposal system modeling and analysis capability (Geologic Disposal Safety Assessment (GDSA)) that supports the integrated modeling of detailed coupled processes controlling disposal system performance of deep geologic repositories, including uncertainty.
- The system-level modeling capability will:
  - Integrate updated conceptual models of subsystem processes and couplings
  - Interface with site characterization data organized in a geologic framework model
  - Develop and apply uncertainty quantification (UQ) and sensitivity analysis (SA) methods
  - Leverage existing computational capabilities (e.g., meshing, visualization, high-performance computing (HPC)) where appropriate
  - Be developed and distributed in an open source environment

# GDSA Framework – Conceptual



Freeze et al. 2013

# GDSA Framework – Computational



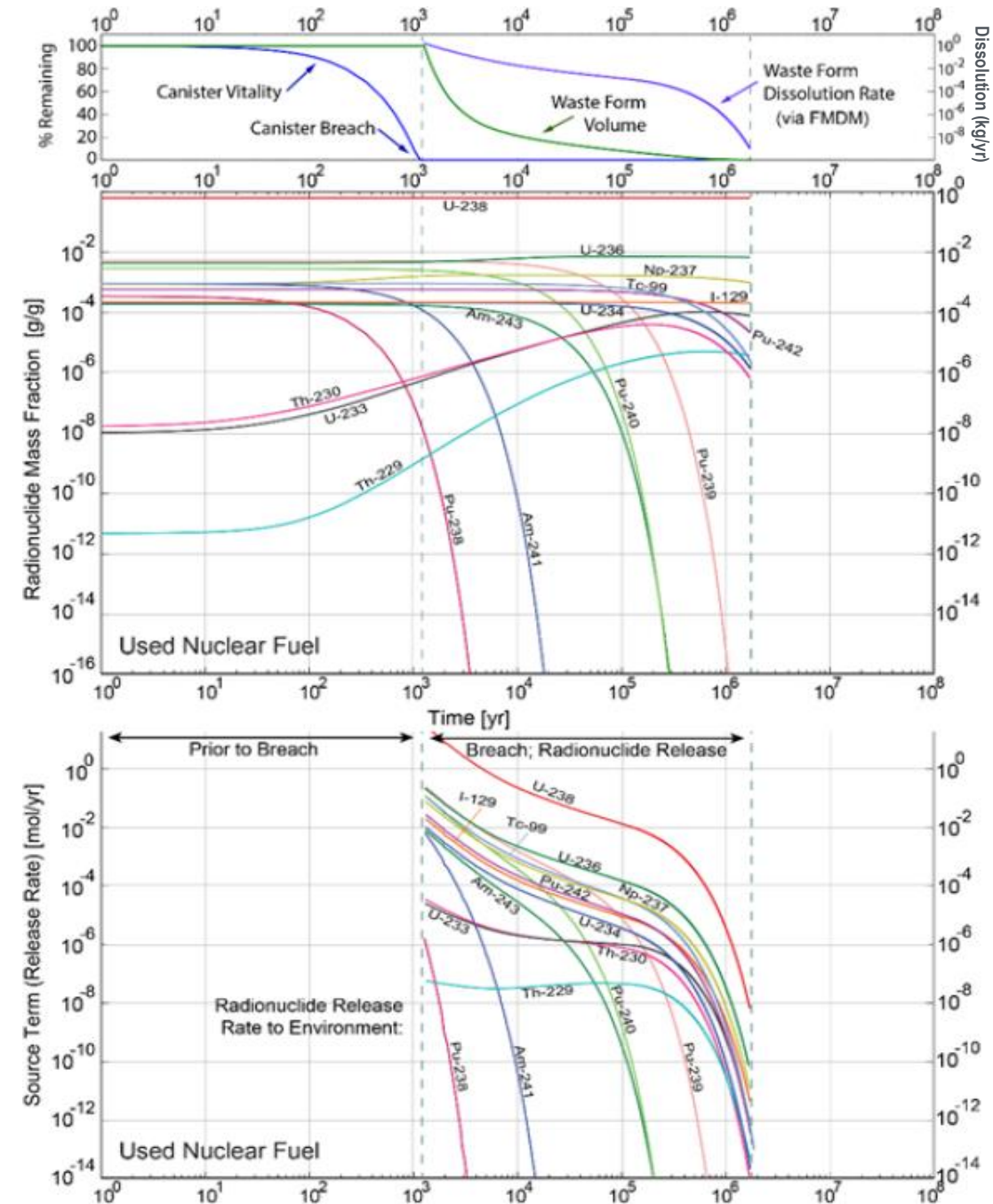
# International Influences

- International working groups
  - DECOVALEX (international group working on DEvelopment of COupled models and their VALidation against Experiments)
  - Nuclear Energy Agency (NEA) salt and crystalline clubs
  - An informal international joint sensitivity analysis group (JOSA)
  - Membership in underground research laboratory (URL) programs
- Available literature
  - Published models, reports, and analyses
- International forums / interactions
  - Conferences, journal publications, manuscript review



# Source Term Capabilities

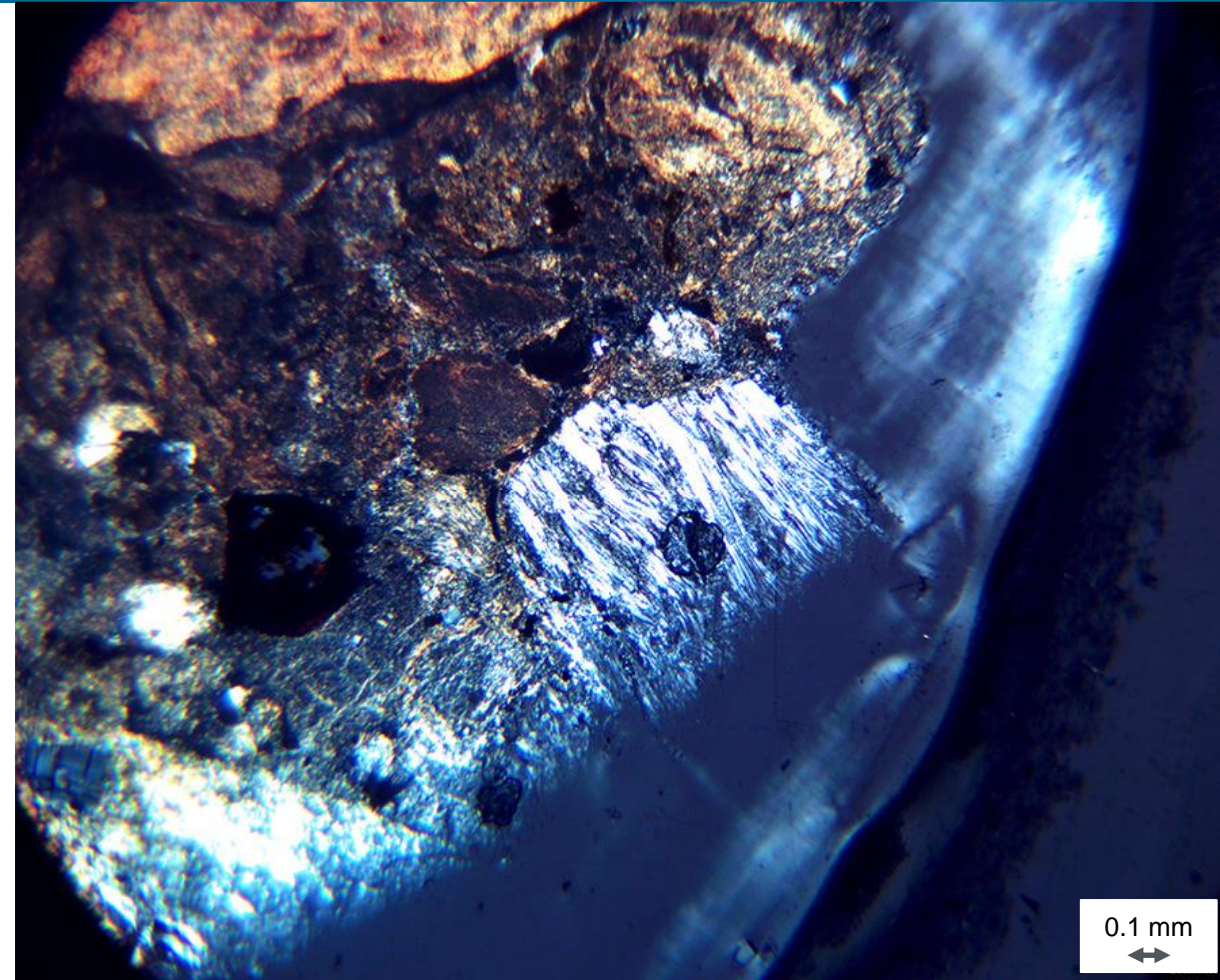
- Waste form inventory
- Decay and ingrowth
- Instant release fractions
- Spent nuclear fuel (SNF) degradation
  - Fuel matrix degradation model (FMDM) surrogate (radiolysis, electro-kinetic reactions, alteration layer growth, diffusion of reactants through the alteration layer)
  - Fractional dissolution rate
  - Defense SNF (instantaneous)
- High-level radioactive waste (HLW) glass degradation
  - Transition state theory (TST)
  - Kienzler dissolution
- Custom (e.g., surface area specific)





# WP, EBS, and DRZ Model Capabilities

- Waste package (WP) objects
  - Allows simulation and monitoring of each WP individually
- WP degradation
  - General corrosion (temperature-dependent) or specified WP breach times
- Buffer behavior and evolution
  - Temperature-dependent characteristic curves
  - Radionuclide adsorption and diffusion
  - Water imbibition and swelling
  - Smectite-to-illite transition
- Disturbed rock zone (DRZ)
  - Buffer swelling effects on DRZ permeability



Caporuscio et al. 2019

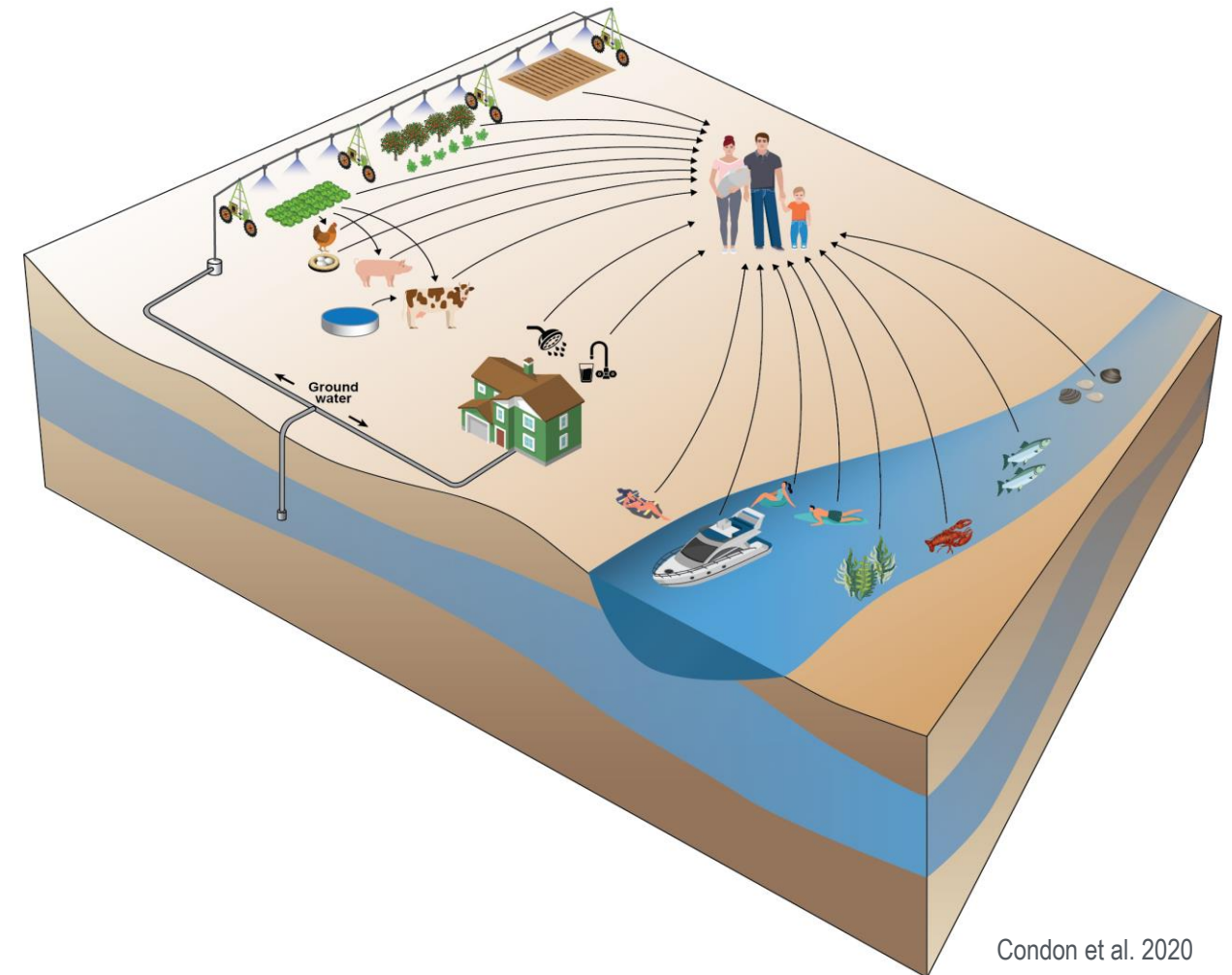
Smectite altering to sericite (muscovite/illite) in a sample from an inner bentonite block of a Grimsel heater test

# Flow and Transport Capabilities

- Thermal-hydrological-chemical (THC)
- Multiphase flow (water and gas)
  - Saturated, unsaturated
- Fractured rock
  - Discrete fracture networks (DFNs)
  - Equivalent continuous porous medium (ECPM)
  - Fracture-matrix interaction
- Solute transport
  - Advection, dispersion
  - Decay, ingrowth, partitioning (sorption, solubility limits)

# Biosphere Capabilities

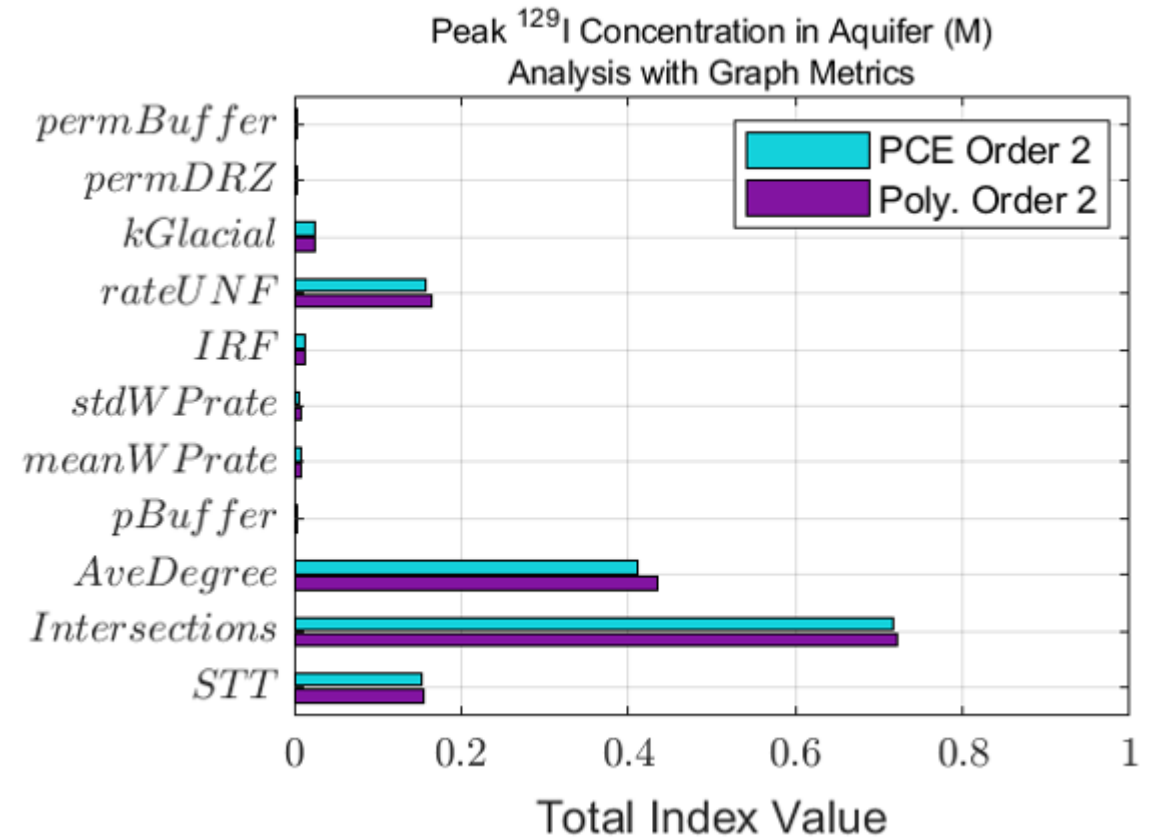
- Well water capture
  - Includes enhancement factors for short-lived radionuclides (e.g., radon-222)
- Water ingestion dose model
  - International
- Biosphere model (in progress)
  - Multiple pathways
  - Various dose mechanisms
  - Bioaccumulation
  - Decay and ingrowth



Condon et al. 2020

# Uncertainty Capabilities

- Uncertainty propagation
  - Random, Latin Hypercube Sampling
  - Aleatory and epistemic loops
- Statistical characterization of output, quantities of interest (QoI)
  - Mean, median, percentiles, etc.
- Sensitivity analysis
  - Correlation, interaction, and variance analysis
  - Identification of input importance
  - Ranking of sources of uncertainty



Swiler et al. 2021



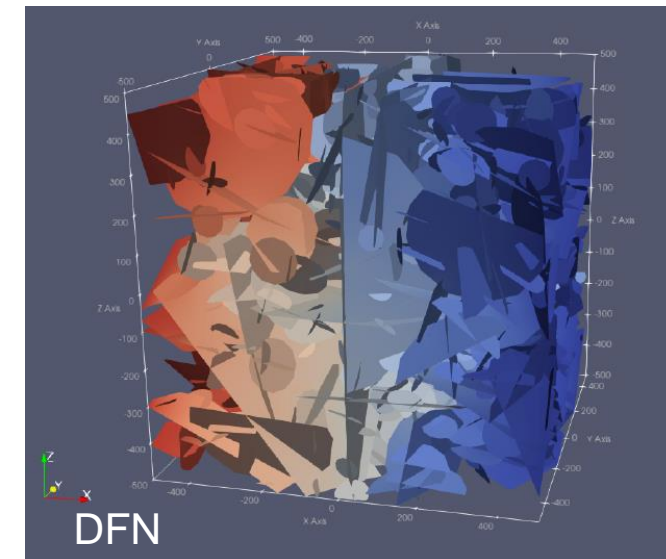
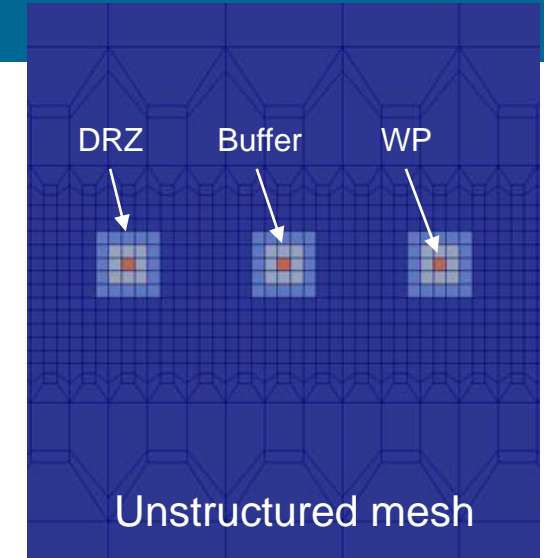
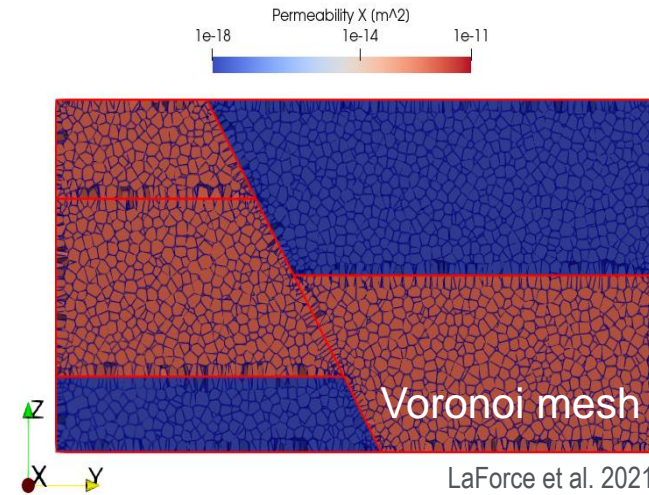
# Meshing and Fracture Network Capabilities

## ■ Meshing

- Traditional (structured, simple unstructured)
- Voronoi (enhanced visualization, local grid refinement)

## ■ Discrete Fracture Networks (DFNs)

- Introduces significant spatial heterogeneity
- Matrix diffusion and adsorption



# Generic FEP screening (from Vaughn et al. 2012)

## Source (Inventory and Waste Form)

- Radionuclide inventory (heat generation, decay and ingrowth)
- Waste form degradation (dissolution processes)
- Gas generation
- Radionuclide release and transport (mobilization, early release [e.g., from gap and grain boundaries], precipitation/dissolution)

## Near Field (Waste Package, Buffer, Backfill, Seals/Liner, and DRZ)

- Waste package degradation (corrosion processes, mechanical damage, early failures)
- Evolution/degradation of EBS components and DRZ
- Effects from rockfall, drift collapse (e.g., salt creep)
- Fluid flow and radionuclide transport (advection, dispersion, diffusion, sorption, decay and ingrowth)
- Chemical interactions (aqueous speciation, mineral precipitation/dissolution, reaction with degraded materials, surface complexation, radiolysis)
- Thermal effects on flow and chemistry
- Effects from disruptive events (seismicity, human intrusion)

## Far Field (Host Rock and Other Units)

- Fluid flow and radionuclide transport (advection, dispersion, diffusion, sorption, decay and ingrowth)
- Effects of fracture flow (e.g., dual porosity/permeability, discrete fracture)
- Groundwater chemistry

## Receptor (Biosphere)

- Dilution due to mixing of contaminated and uncontaminated waters
- Receptor characteristics (basis for converting radionuclide concentrations in groundwater to dose)

## Key

Red = FEP included, at least to some degree

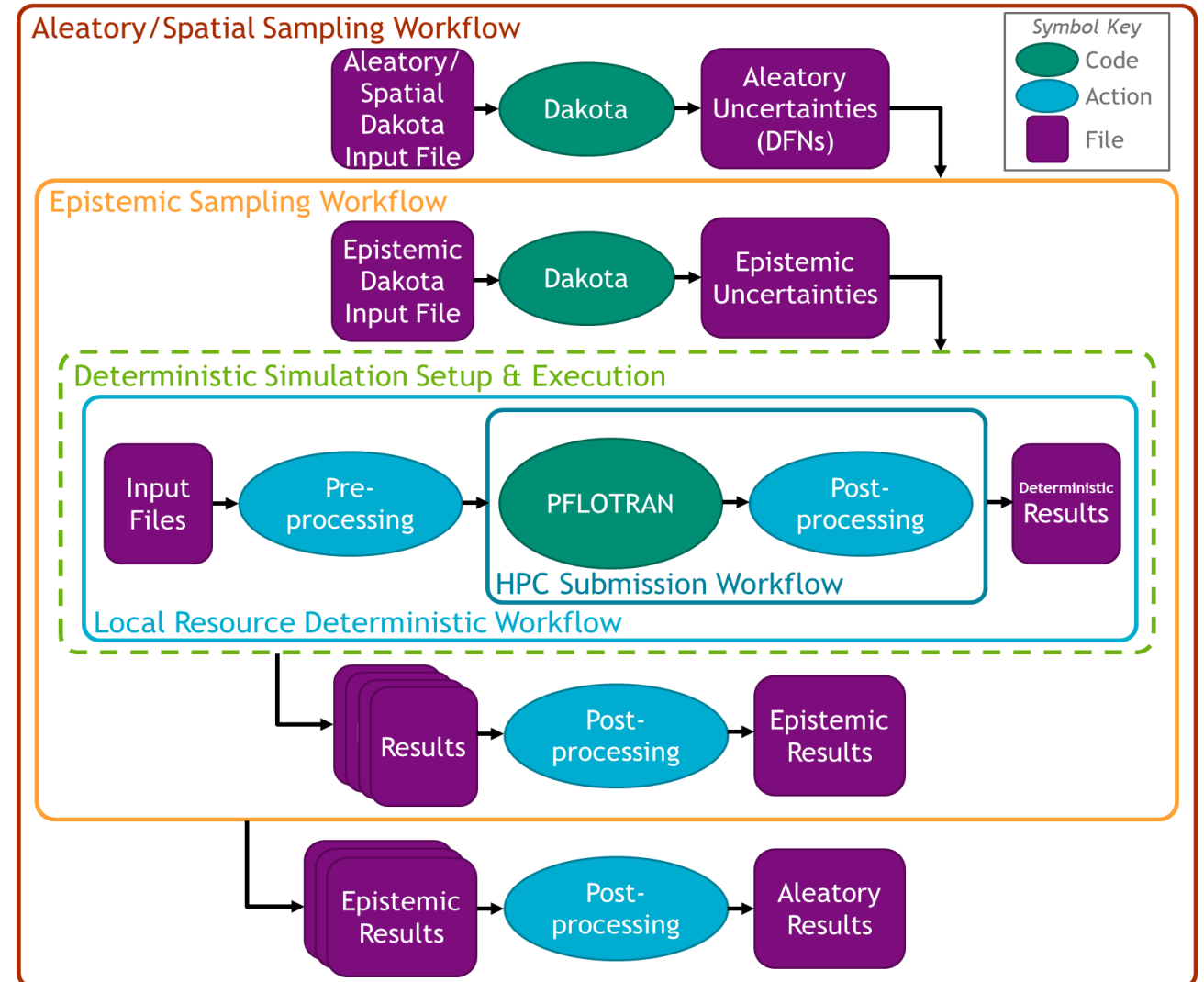
Black = FEP capability lacking or excluded so far

- Features, Events, and Processes (FEPs)
  - Many excluded FEPs (or yet-to-be-implemented FEPs) are chemical, mechanical, and disruptive FEPs

# Next Gen Workflow Capabilities

## ■ Workflow

- Autonomously executes all GDSA Framework's major components
- Graphic object-oriented interface shows
  - How all components are linked
  - Status of each component during a simulation
- Executes post-processing calculations
- Facilitates transparency and reproducibility



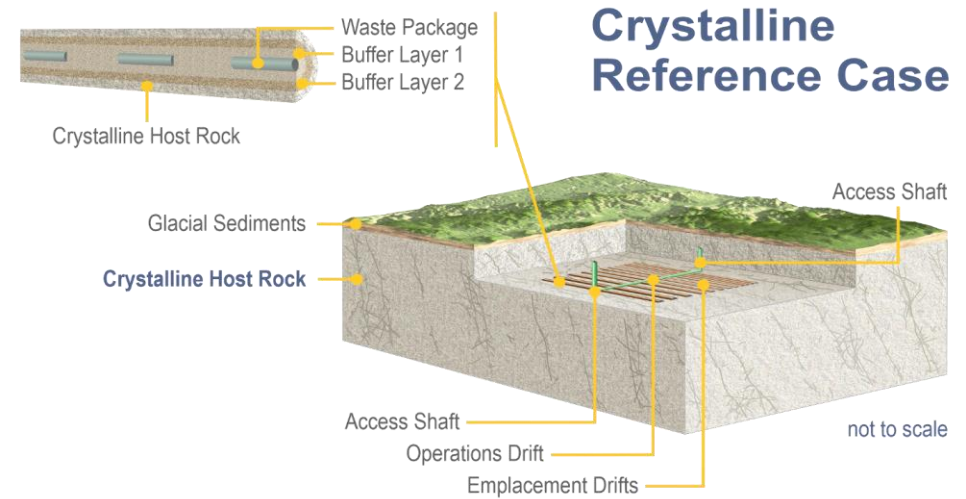
Swiler et al. 2021



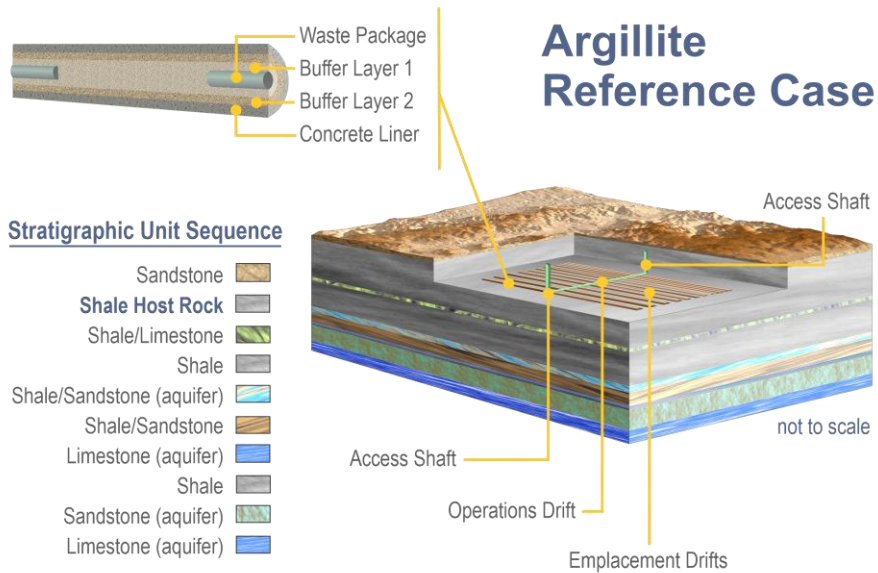
# GDSA Framework Applications

# GDSA Framework Applications – Total System

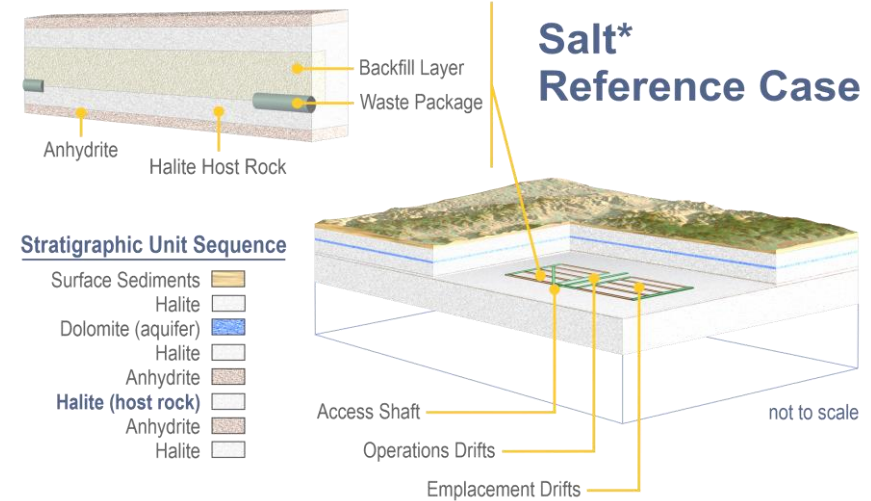
- Study and assess
  - Total system performance
  - Importance of included FEPs



**Crystalline Reference Case**



**Argillite Reference Case**

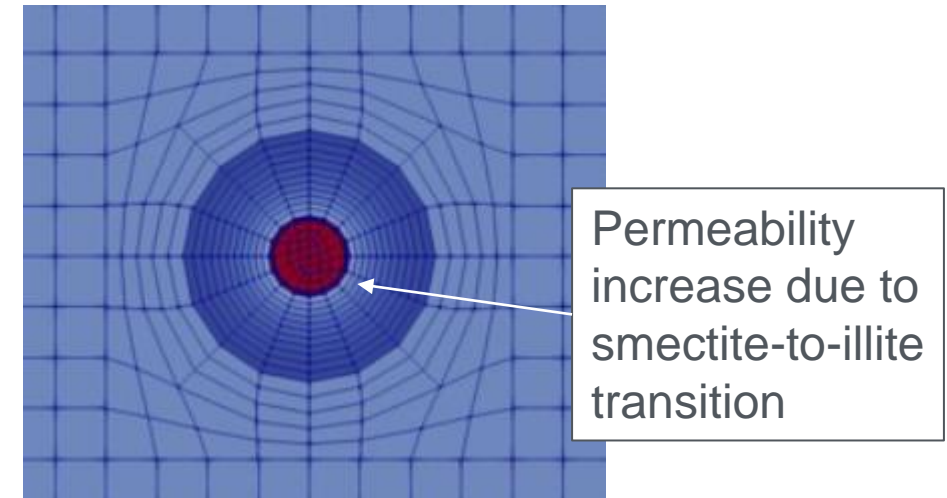
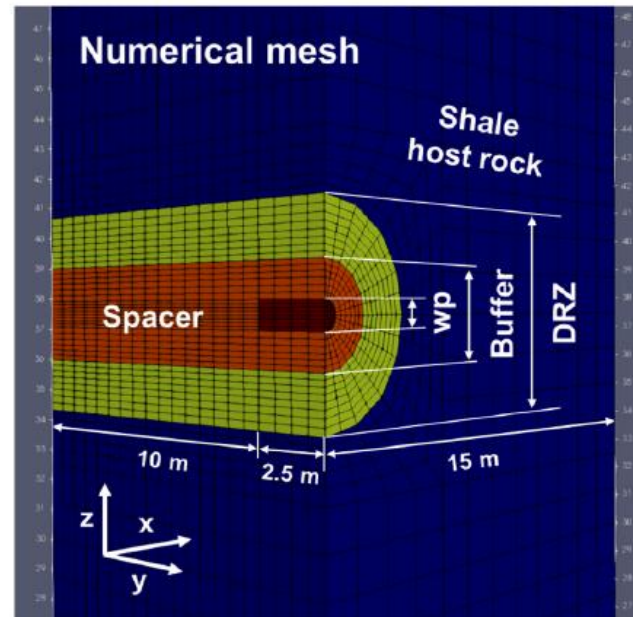
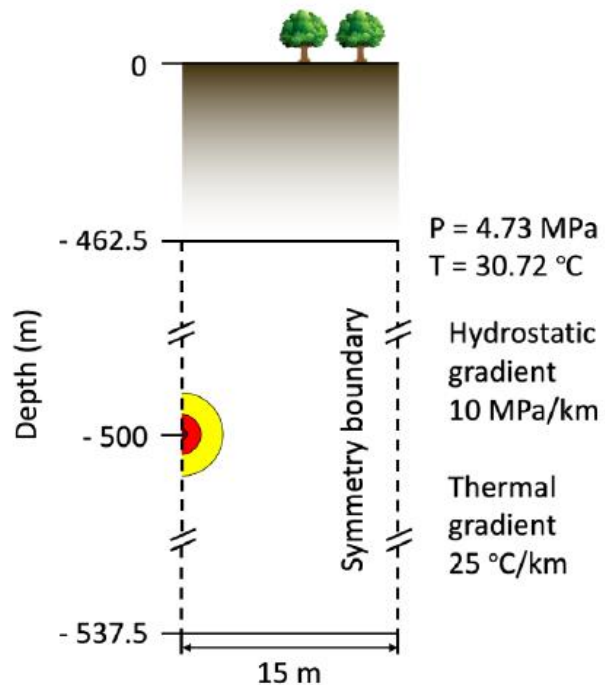


**Salt\* Reference Case**

\*2019 commercial waste case

# GDSA Framework Applications – Subsystems

- Higher fidelity simulations of subdomains of reference cases
- Assess effects of FEPs too expensive to simulate in total system simulations

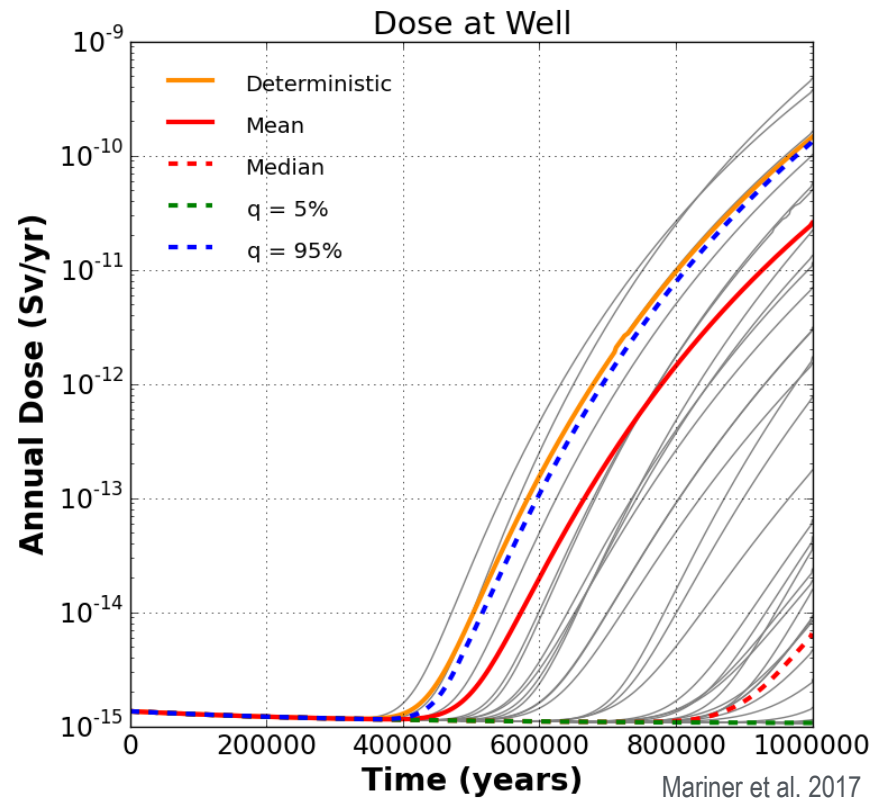


Nole et al. 2021

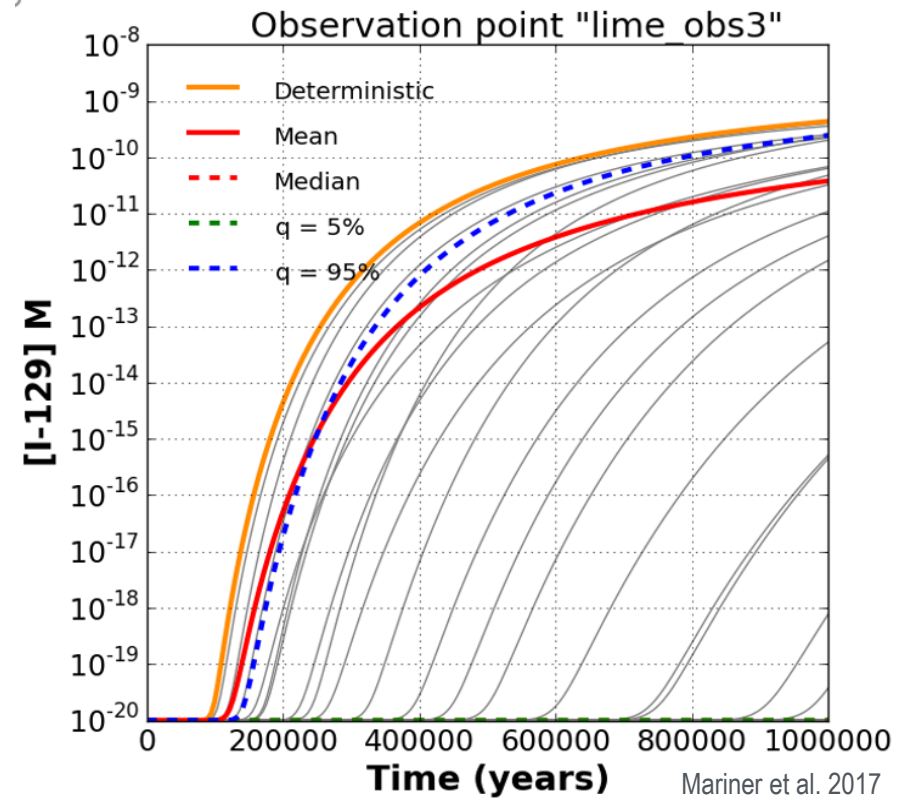
# Performance Metrics

# Performance Metrics – Total System

- Annual dose to receptor over time

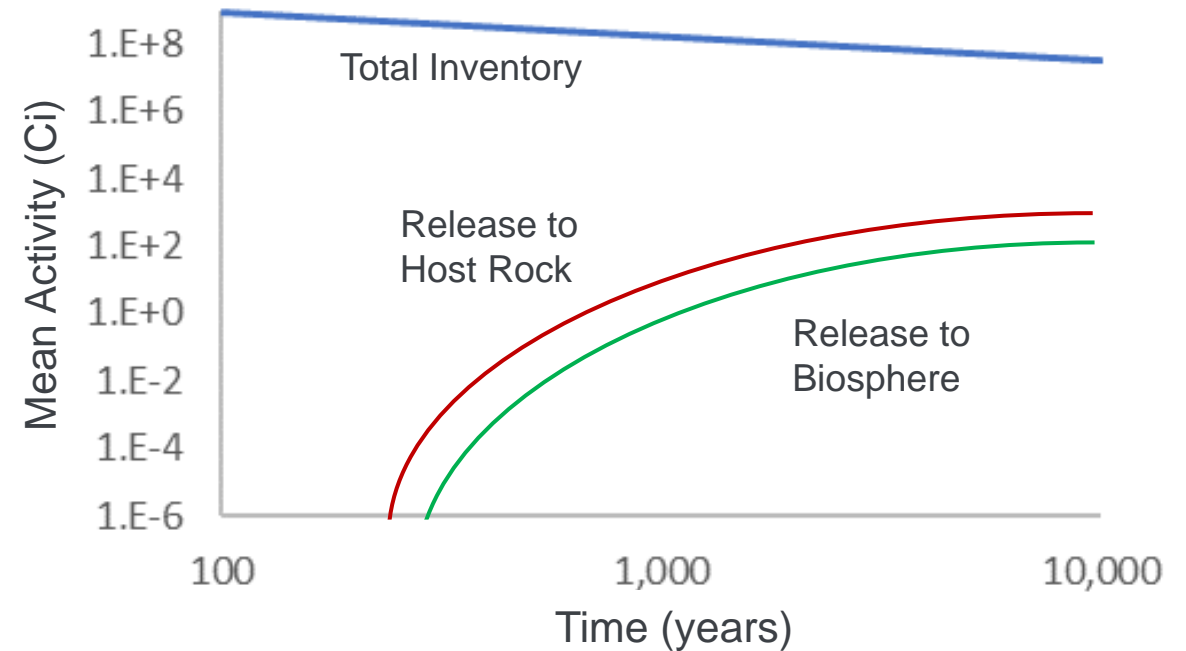


- Radionuclide concentration (or total activity) in aquifer



# Performance Metrics – Multiple Barriers

- Engineered Barrier System (EBS)
  - Mean release to host rock versus total inventory activity
- Combined EBS and Natural Barrier System (NBS)
  - Mean release to biosphere versus total inventory activity



# Process Model Integration

<b>Integration</b>	<b>Guided by</b>
Scope	Roadmap, FEP analysis, 5-yr disposal research plans
Importance	Scope, simulations, experience, literature
Feasibility	Analysis of inputs, outputs, code constraints
Readiness	Screening questions
Decision	Readiness screening and prioritization considerations



# Capability Development

# Capability Development – Types

- Feature / process model development
  - Coupled / internalized
  - Reduced-order / surrogate
- Solvers
  - Convergence, speed
- Preprocessors / postprocessors
  - Meshing, discrete fracture networks, performance metric calculations, uncertainty and sensitivity analysis
- Verification
  - Testing, documentation
- Reproducibility, transparency, user-friendliness

# Model Capability Development – Importance and Readiness

- Will the model have significant effects on important repository performance metrics and/or provide important answers to key questions?
- Are all model assumptions affecting the validity of the model acceptable for the intended use?
- Does the model cover the necessary ranges of input values?
- Is there a better model or approach with more defensible assumptions that covers the same or larger range of applicability?
- Does the standalone model converge and produce sensible and defensible results over the entire multi-dimensional sample space of application?

# Model Capability Development – Prioritization

- Importance to 5-yr plan and roadmap
- Importance to reference case(s)
- A balance of
  - Required level of effort
  - Available resources

# Summary

# Summary

- GDSA Framework development guided by
  - Roadmap, FEPs analysis, 5-yr plans
  - International influences
- Model capability development decisions rely on
  - Readiness considerations
  - Prioritization considerations

# References

- Caporuscio, F.A., M.J. Rock, and K.B. Sauer (2019). *FY19 Argillite International Collaborations Report LANL*. LA-UR-19-23480. Los Alamos National Laboratory.
- Condon, C.A., B. A. Napier, S. Ghosh, W.C. Weaver and C.B. Varnum-Lowry (2020). *GDSA Biosphere Model Software Requirements Document*. PNNL-30280. Pacific Northwest National Laboratory.
- Freeze, G., M. Voegele, P. Vaughn, J. Prouty, W.M. Nutt, E. Hardin, S.D. Sevougian (2013). *Generic Deep Geologic Disposal Safety Case*. SAND2013-0974P. Sandia National Laboratories.
- LaForce, T., E. Basurto, K.W. Chang, R. Jayne, R. Leone, M. Nole, F.V. Perry, and E. Stein (2021, in progress). *GDSA Repository Systems Analysis Investigations in FY2021*. Sandia National Laboratories.
- Mariner, P.E., Nole, M.A., Basurto, E., Berg, T.M., Chang, K.W., Debusschere, B.J., Eckert, A.C., Ebeida M.S., Gross, M., Hammond, G.E., Harvey, J., Jordan, S.H., Kuhlman K.L., LaForce, T.C., Leone, R.C., McLendon III, W.C., Mills, M.M., Park, H.D., Perry, F.V., Salazar III, A., Seidl, D.T., Sevougian, S.D., Stein, E.R., Swiler, L.P. (2020), *Advances in GDSA Framework Development and Process Model Integration*. SAND2020-10787 R. Sandia National Laboratories.
- Mariner, P.E., Connolly, L.A., Cunningham, L.J., Debusschere, B.J., Dobson, D.C., Frederick, J. M., Hammond, G.E., Jordan, S., LaForce, T., Nole, M., Park, H., Perry, F.V., Rogers, R.D., Seidl, D.T., Sevougian, S.D., Stein, E.R., Swift, P.N., Swiler, L.P., Vo, J., and Wallace, M. (2019), *Progress in Deep Geologic Disposal Safety Assessment in the U.S. since 2010*. SAND2019-12001 R. Sandia National Laboratories.
- Mariner, P. E., E. R. Stein, J. M. Frederick, S. D. Sevougian and G. E. Hammond (2017). *Advances in Geologic Disposal System Modeling and Shale Reference Cases*. SAND2017-10304 R. Sandia National Laboratories.
- Nole, M., R.C. Leone, H.D. Park, M. Paul, A. Salazar, G.E. Hammond, and P.C. Lichtner (2021). *PFLOTRAN Development FY2021*. SAND2021-8709 R. Sandia National Laboratories.
- Swiler, L.P., E. Basurto, D.M. Brooks, A.C. Eckert, R. Leone, P.E. Mariner, T. Portone, M. L. Smith and E.R. Stein (2021). *Uncertainty and Sensitivity Analysis Methods and Applications in the GDSA Framework (FY2021)*. SAND2021-9903R. Sandia National Laboratories.



# Questions